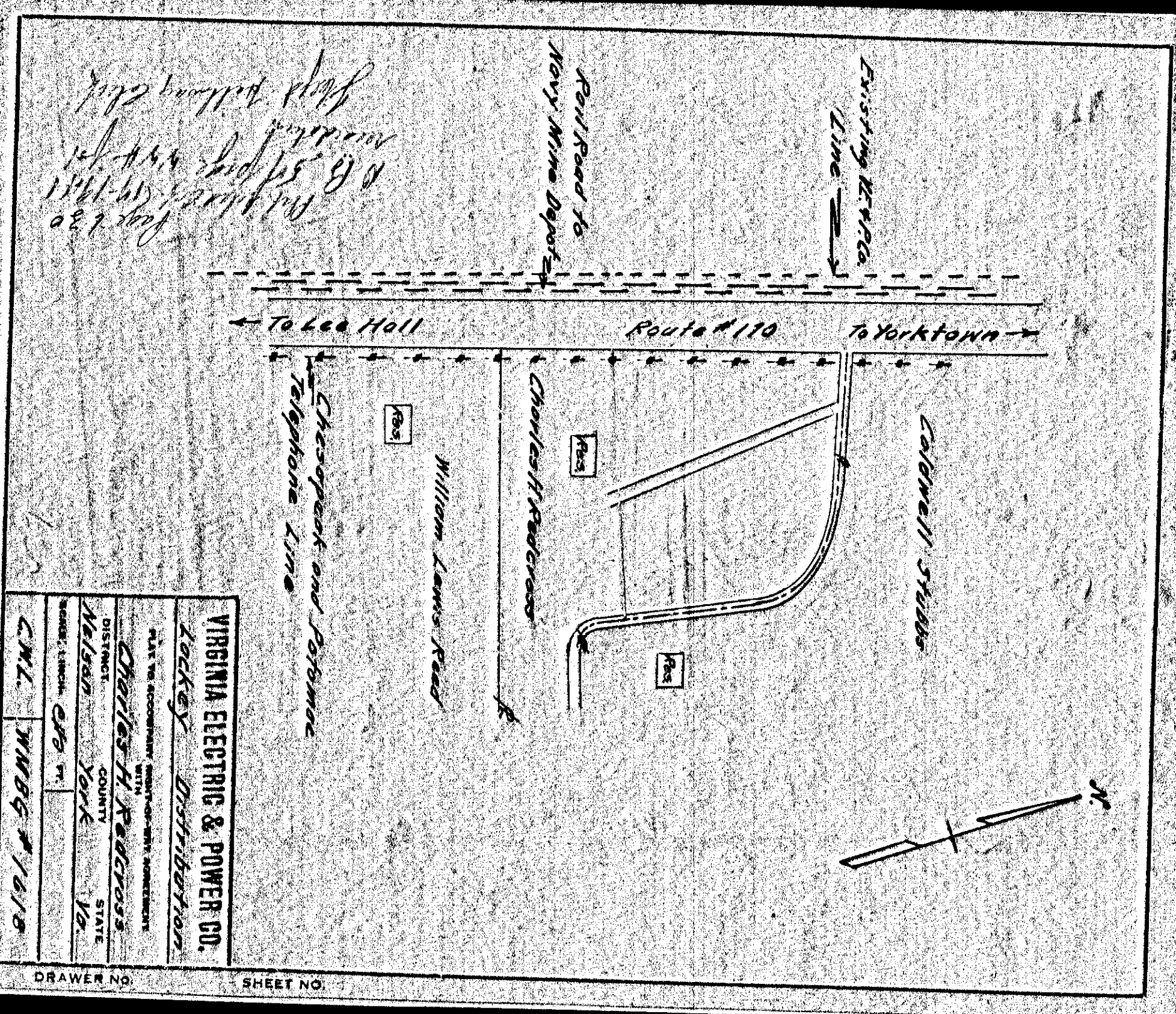


VIRGINIA ELECTRIC & POWER CO.	
Yorktown Distribution	
PLAN TO ACCOMPANY RIGHT-OF-WAY AGREEMENT	
DISTRICT	Sydney Smith Estate
COUNTY	York
STATE	Va.
SCALE: 1 INCH = 400 FT.	CWS
C.W.L.	WMBG# 1622

DRAWER NO. SHEET NO.

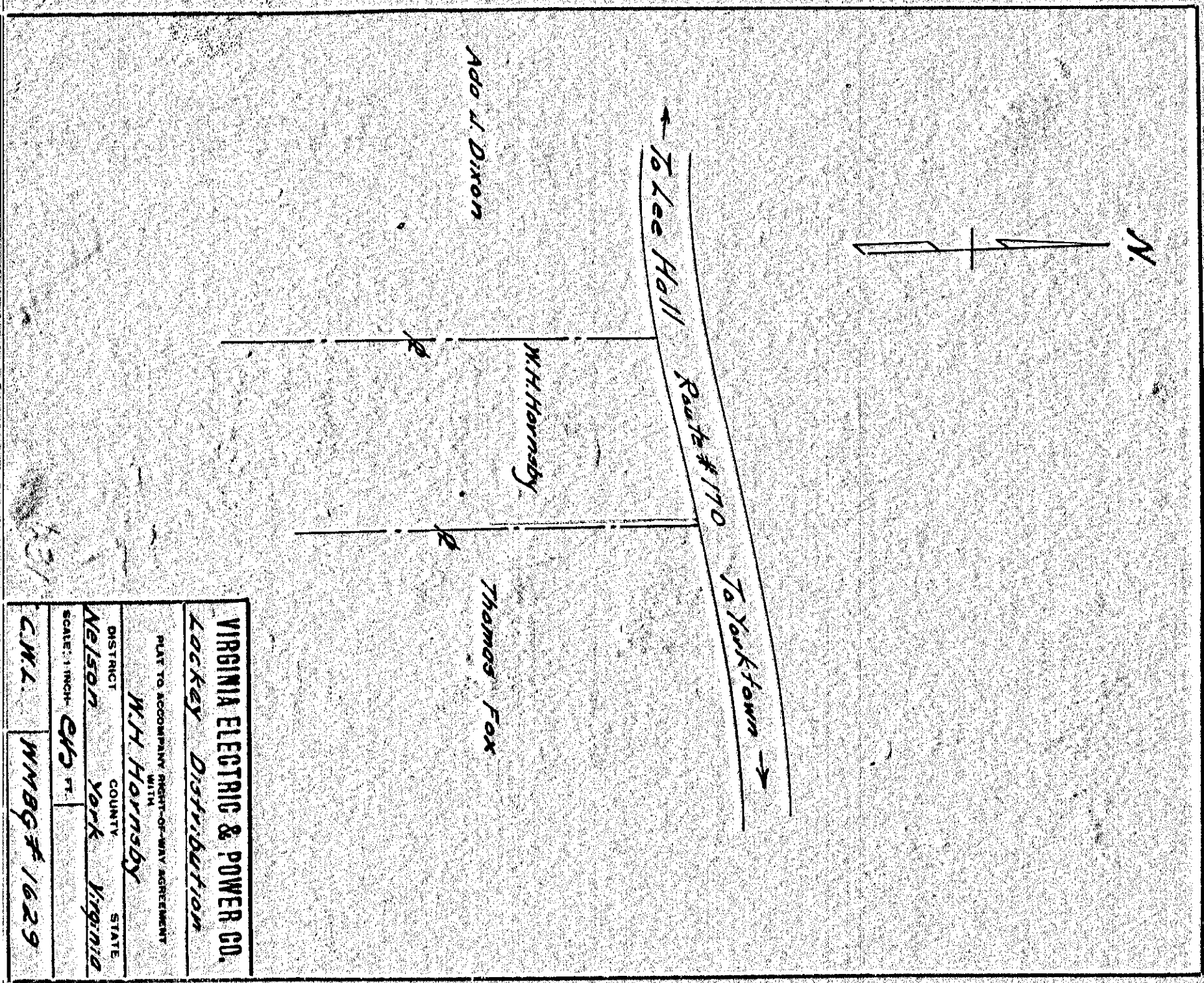


VIRGINIA ELECTRIC & POWER CO.	
Lockey Distribution	
PLAN TO ACCOMPANY RIGHT-OF-WAY AGREEMENT	
DISTRICT	Charles H. Patterson
COUNTY	York
STATE	Va.
SCALE: 1 INCH = 400 FT.	CWS
C.W.L.	WMBG# 1618

DRAWER NO. SHEET NO.

629

631

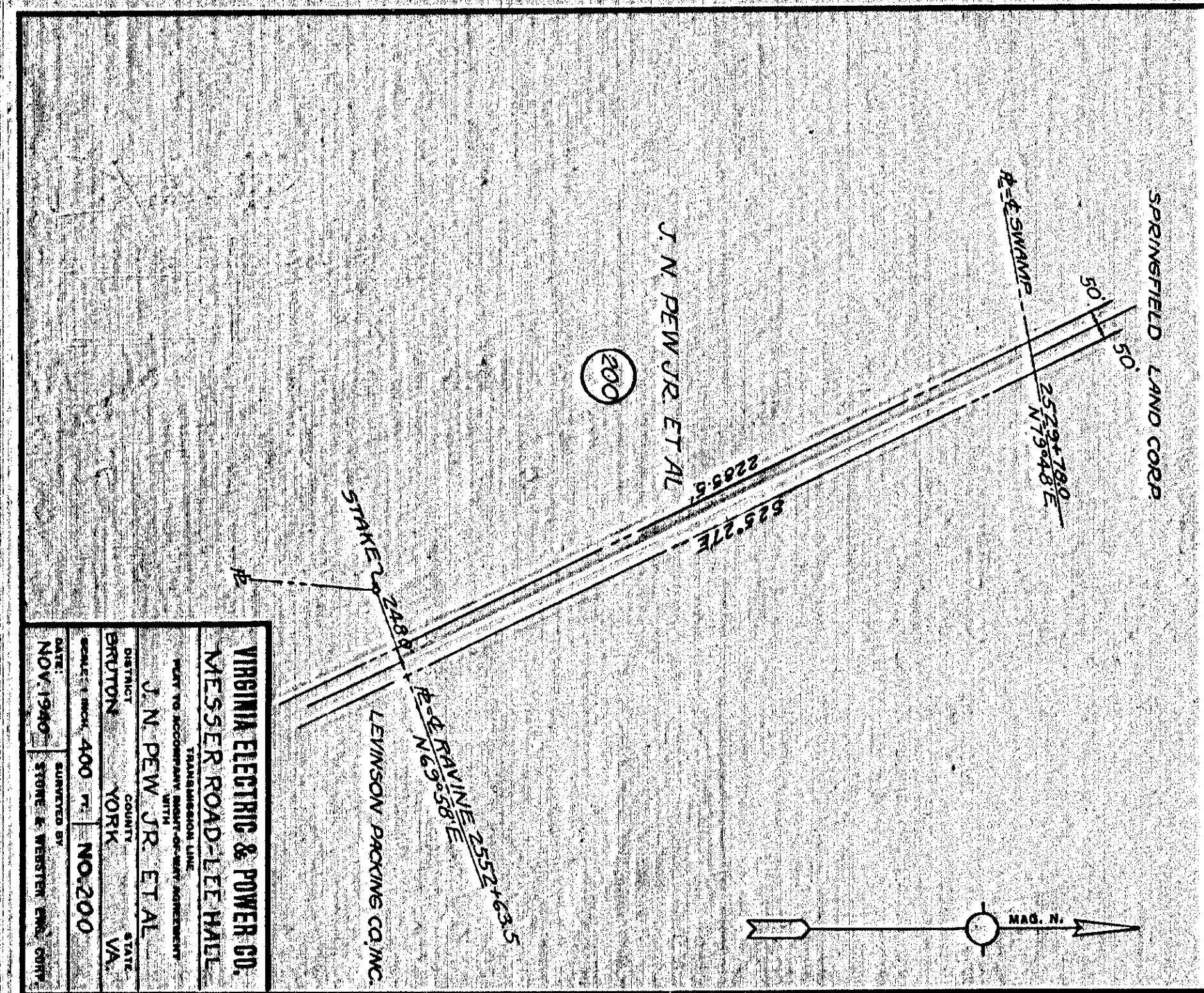


VIRGINIA ELECTRIC & POWER CO.	
Lockey Distribution	
PLAN TO ACCOMPANY RIGHT-OF-WAY AGREEMENT	
DISTRICT	W.H. Hornsby
COUNTY	York
STATE	Virginia
SCALE: 1 INCH = 400 FT.	CWS
C.W.L.	WMBG# 1629

DRAWER NO. SHEET NO.

630

632



VIRGINIA ELECTRIC & POWER CO.	
Messier Road-Let Hall	
TRANSMISSION LINE	
PLAN TO ACCOMPANY RIGHT-OF-WAY AGREEMENT	
DISTRICT	J.N. PEW JR. ET AL
COUNTY	York
STATE	VA.
SCALE: 1 INCH = 400 FT.	NO. 200
DATE: NOV 1940	APPROVED BY: STUBBS & BRESTER, INC. CIVIL

DRAWER NO. SHEET NO.