

Sta	Bearing	Dist	Remarks
1	N 88° 30' E	22.12	Stake on road
2	S 5° 51' E	11.75	" " " "
3	S 86° 50' W	35.65 1/2	" " " "
4	N 74° 20' W	11.97	" " " "

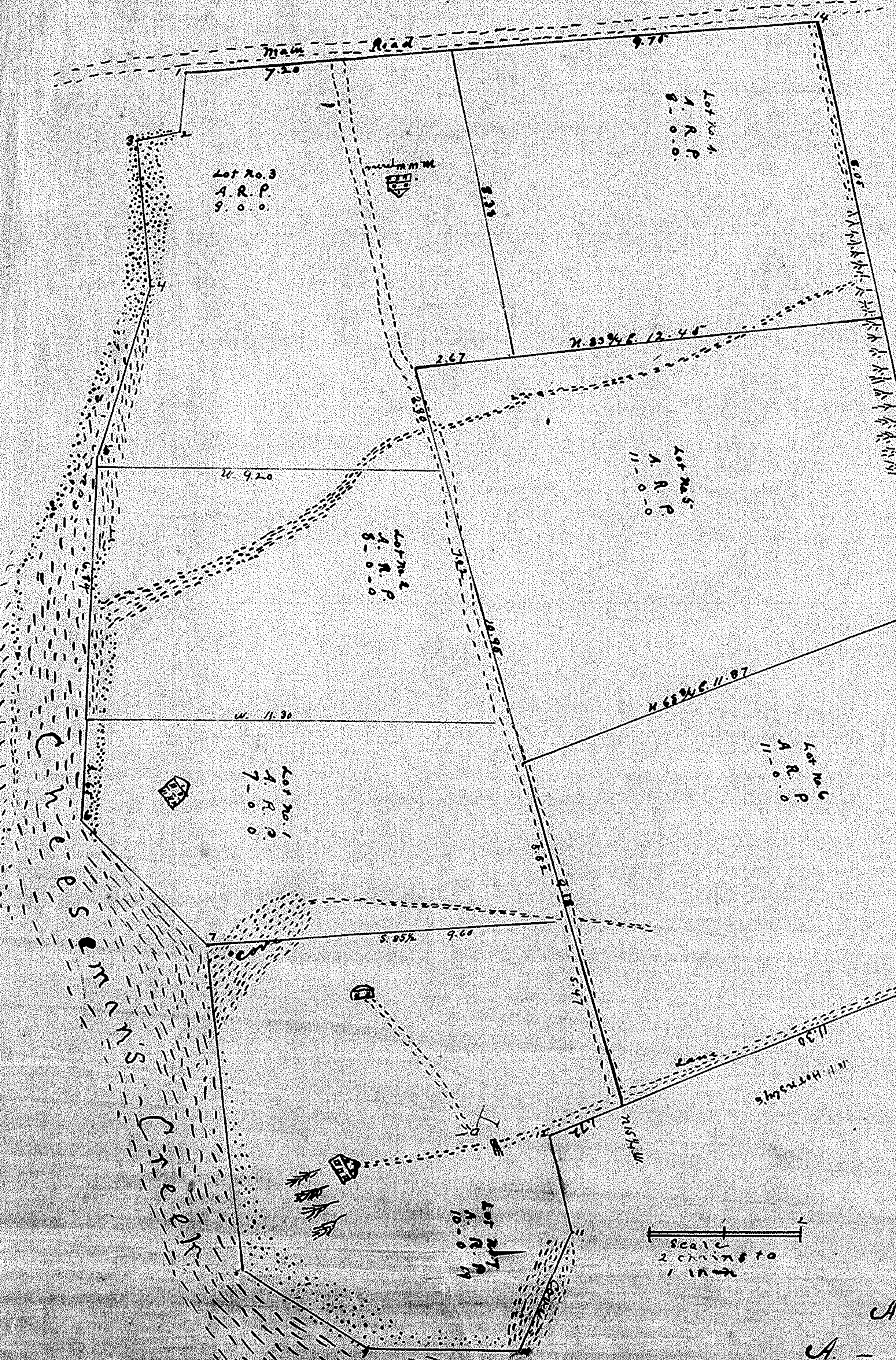
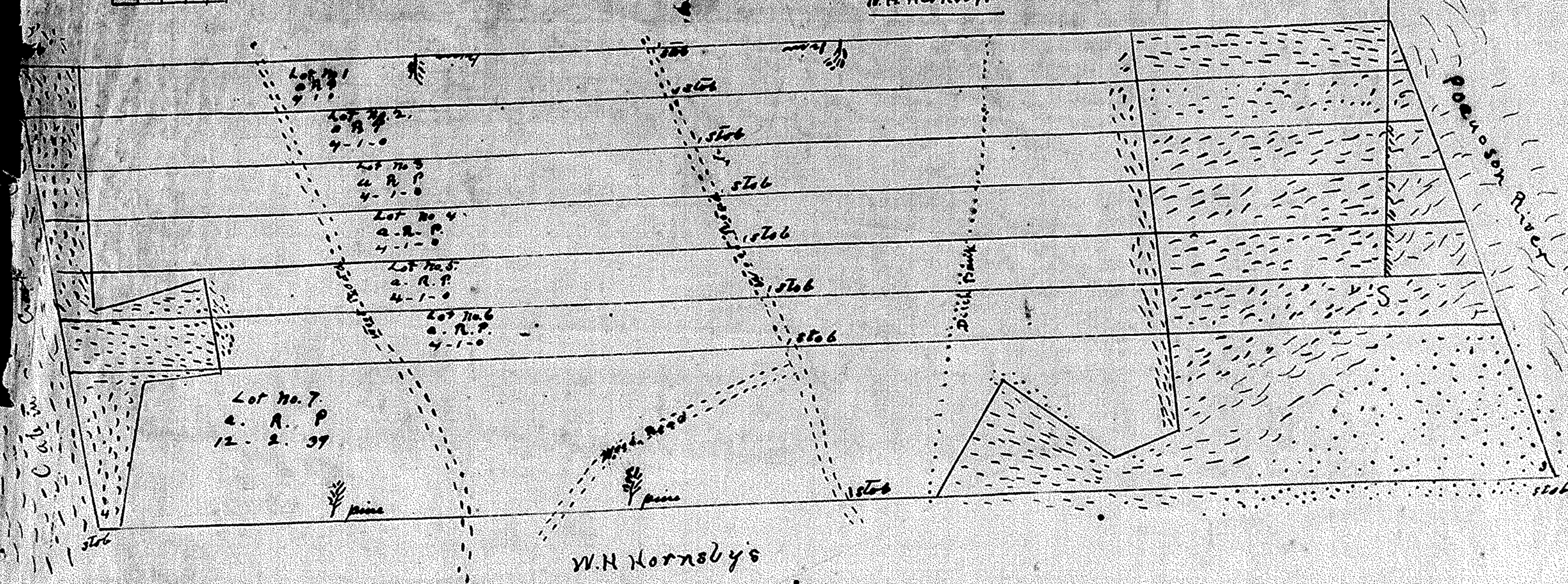


Area  
A - R - P  
38 - 0 - 57

A plan of the land bounded by the York County Est. situated on Chesapeake Creek near York Co. Va. Surveyed and partitioned by authority of the commissioners appointed by order of Court in the chancery suit of Robt. C. Wynne vs Wynne & als. No proceedings in the Circuit Court of York County. Survey made May 10, 1904. By W.M. Crooks S. for Y.C.

Chain Carriers Sworn  
W.M. Wynne & Luther Foxwell

Admitted to record  
9th July 1904.  
T. J. Flood  
J. J. Flood  
Clerk



A plot of the arable land belonging to the Robt. C. Wynne Est. situated on Chesapeake Creek near York Co. Va. Surveyed and partitioned by authority of the commissioners appointed by order of Court in the chancery suit of Robt. C. Wynne vs Wynne & als. No proceedings in the Circuit Court of York County. Survey made May 10, 1904. By W.M. Crooks S. for Y.C.

Chain Carriers Sworn  
W.M. Wynne & Luther Foxwell

Admitted to record  
9th July 1904.  
T. J. Flood  
J. J. Flood  
Clerk

Sta	Bearing	Dist	Remarks
1	S 88° 30' E	1.87 1/2	Stake on road
2	S 74° 40' W	1.12	" " " "
3	S 5° 51' E	3.87	" " " "
4	S 27° 14' W	4.67	" " " "
5	S 22° 40' W	4.76	" " " "
6	S 24° 30' E	4.70	" " " "
7	S 6° 0' E	3.89	" " " "
8	S 86° 34' E	3.89	" " " "
9	S 87° 0' E	4.09	" " " "
10	N 22° 30' E	3.62	" " " "
11	N 62° 12' W	2.71	" " " "
12	N 65° 5' E	13.26 1/2	" " " "
13	N 12° 14' W	25.32	" " at end of beam
14	S 85° 7' W	16.87 1/2	" " on Main Road

Area  
A - R - P  
63 - 0 - 19