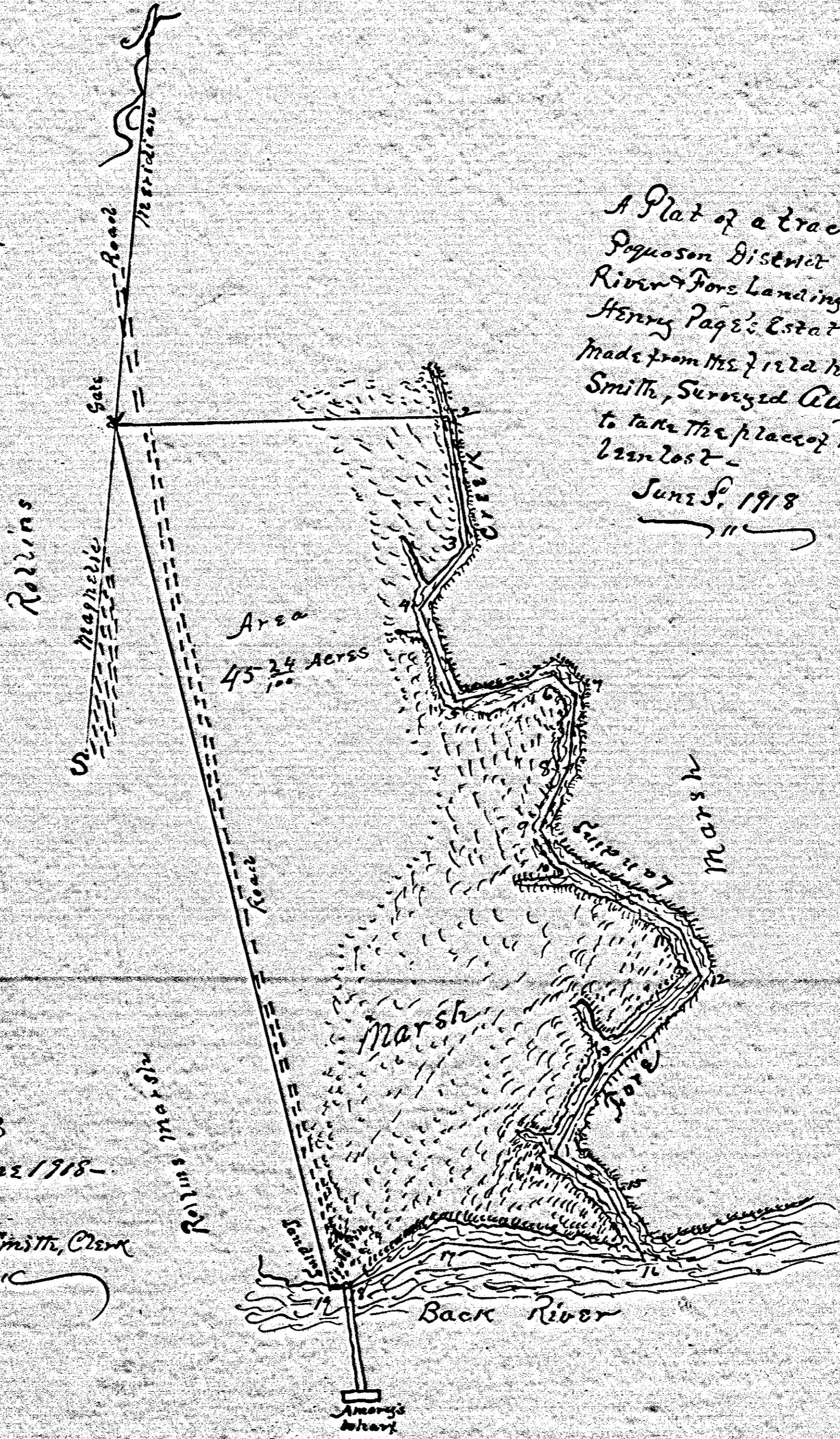


Field Notes

Sta	Bear	Dist.	Rem -
1	N 83 E	878' 2"	near South Gate Post
2	S 14 1/2 E	356' 7"	Center of Creek
3	S 33 W	264' 4"	" " "
4	S 26 E	276' 6"	" " "
5	N 67 3/4 E	267' 4"	" " "
6	S 49 3/4 E	79' 2"	" " "
7	S 1 1/2 E	192' 5"	" " "
8	S 16 1/2 W	182' 2"	" " "
9	S 37 E	95' 8"	" " "
10	S 6 1/2 E	356' 5"	" " "
11	S 30 1/2 E	145' 2"	" " "
12	S 40 1/2 W	363'	" " "
13	S 20 3/4 W	259' 4"	" " "
14	S 62 1/2 E	159' 9"	" " "
15	S 30 1/4 E	207' 5"	" " "
16	S 89 1/4 W	514' 9"	in Back River
17	S 59 W	288' 9"	" " "
18	S 73 1/2 W	461' 5"	at wharf
19	N 20 1/2 W	2381' 8"	from Pin W. of wharf



A Plat of a tract of land situated in
 Pogueson District York County, Virginia, on Back
 River & Fox Landing Creek, formerly belonging to
 Henry Page's Estate, now owned by Seth Ward -
 made from the field notes of County Surveyor Sydney
 Smith, Surveyed Aug 25th 1916 - This Plat is
 to take the place of the original Plat which has
 been lost -
 June 9, 1918 Sydney Smith, Surveyor

Admitted to Record
 This the 23rd day of June 1918 -
 S.S.S.
 Sydney Smith, Clerk