

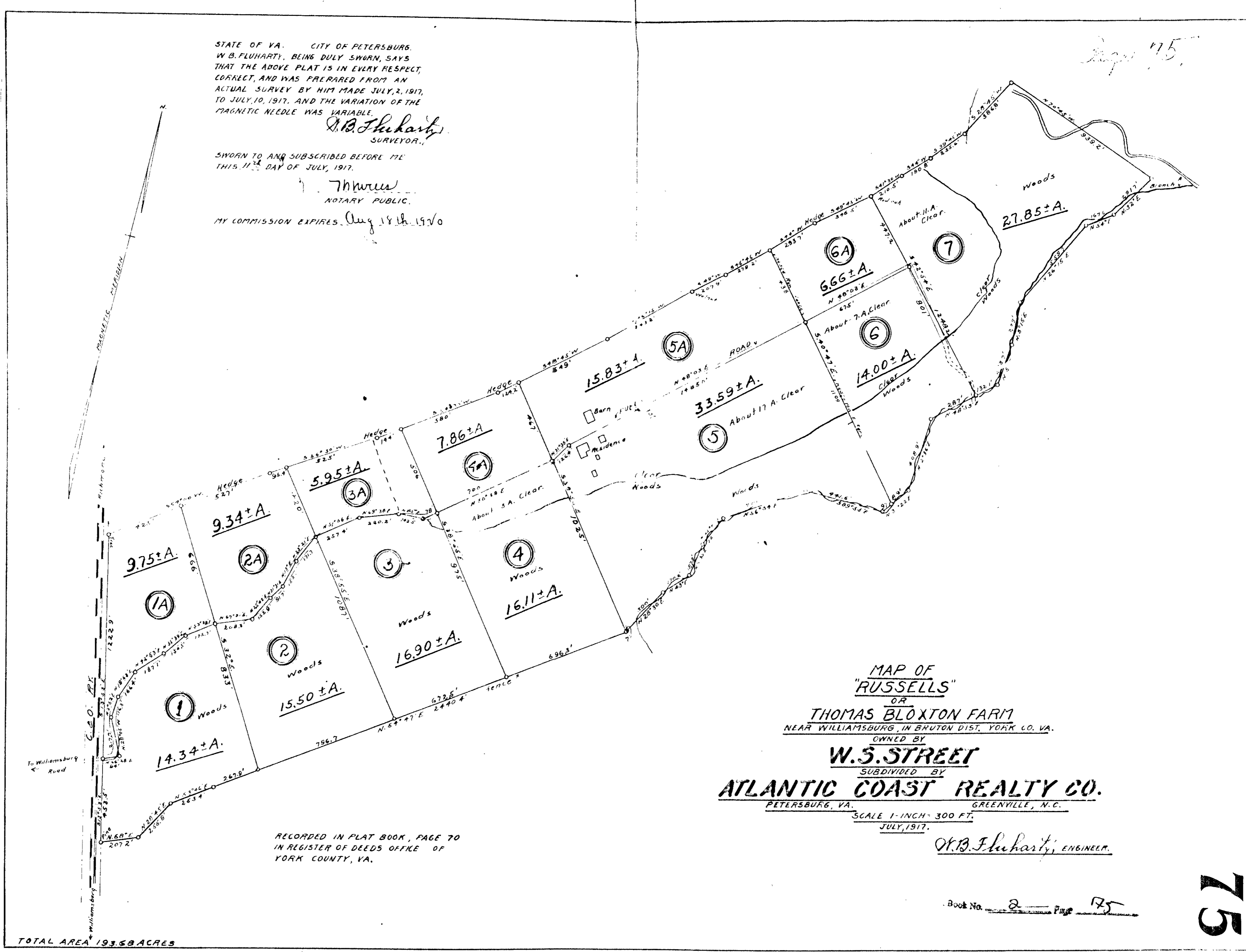
STATE OF VA. CITY OF PETERSBURG.
 W. B. FLUHARTY, BEING DULY SWORN, SAYS
 THAT THE ABOVE PLAT IS IN EVERY RESPECT,
 CORRECT, AND WAS PREPARED FROM AN
 ACTUAL SURVEY BY HIM MADE JULY, 2, 1917,
 TO JULY, 10, 1917, AND THE VARIATION OF THE
 MAGNETIC NEEDLE WAS VARIABLE.

W. B. Fluharty
 SURVEYOR.

SWORN TO AND SUBSCRIBED BEFORE ME
 THIS 11th DAY OF JULY, 1917.

Thomas
 NOTARY PUBLIC.

MY COMMISSION EXPIRES Aug 18th 1920



MAP OF
 "RUSSELLS"
 OR
 THOMAS BLOXTON FARM
 NEAR WILLIAMSBURG, IN BRUTON DIST., YORK CO., VA.
 OWNED BY
 W.S. STREET
 SUBDIVIDED BY
 ATLANTIC COAST REALTY CO.
 PETERSBURG, VA. GREENVILLE, N.C.
 SCALE 1-INCH = 300 FT.
 JULY, 1917.

W. B. Fluharty, ENGINEER.

RECORDED IN PLAT BOOK, PAGE 70
 IN REGISTER OF DEEDS OFFICE OF
 YORK COUNTY, VA.

TOTAL AREA 193.68 ACRES

Book No. 2 Page 75

75