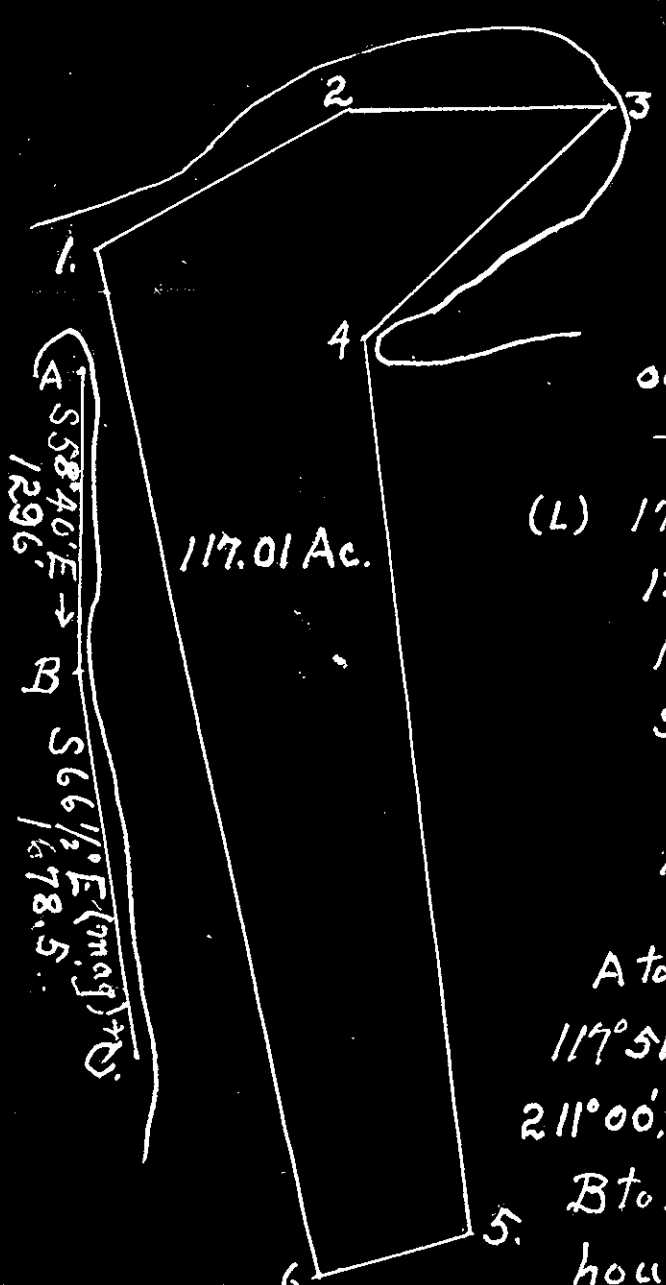


Recorded in Oyster Book # 3 page # 299

Recorded in Oyster Book # 3 page # 299



	A	To	B	C
	00° 00'	B	—	00° 00'
(L)	172° 08'	1	2° 04' (R)	
	134° 12'	2	26° 03'	
	116° 50'	3	43° 09'	
	96° 39'	4	42° 25'	24° 38' (R)
	24° 19'	5	145° 12'	125° 02'
	14° 43'	6	138° 49'	144° 15'

A to B 00° 00'. To Cager Rock light
 117° 51'. To N edge of N. pier of bridge
 211° 00'. To lone pine 112° 25' (L)

B to A 00° 00'. To sta. C 172° 51'. To light-house 57° 30'. To SW cor. Shackelford house 126° 33' (R)

C to B 00° 00'. To light-house 58° 41'. To gable large white house 11° 20'. To gable Shackelford house 128° 38' (R)

OYSTER PLANTING GROUND

W. C. HOGGE
IN

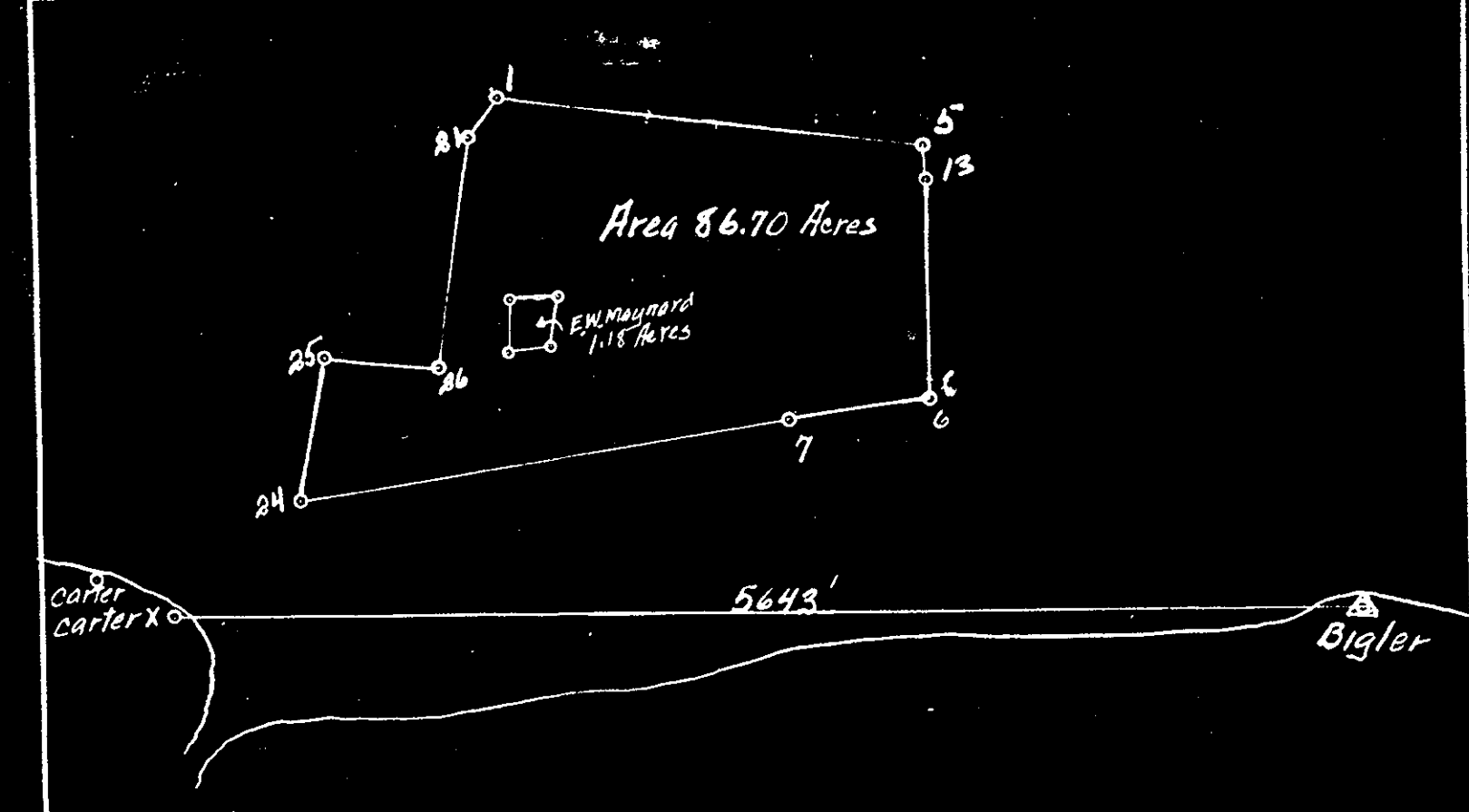
York River

District No. 15. York Co.

Scale 1/10,000 Dec 14 1948.

Surveyed by Paul A. Hobday
Cert. Sur.

DATE OF APPLICATION		COMMONWEALTH OF VIRGINIA COMMISSION OF FISHERIES	FOR OFFICE USE	
DATE OF ASSIGNMENT			PLAT NO.	
COUNTY RECORDED IN			MAP NO.	
BOOK	PAGE		FILE NO.	



Carter X	To	Bigler
360° 00'	Bigler	360° 00'
45° 01' L	24	6° 05' R
62° 22' L	25	14° 00' R
45° 02' L	26	15° 09' R
59° 31' L	21	28° 11' R
57° 47' L	1	31° 16' R
31° 53' L	5	46° 55' R
30° 20' L	13	45° 06' R
13° 40' L	6	25° 55' R
17° 17' L	7	19° 09' R
56° 50' L		96° 02' R
17° 02' L		158° 00' R
11° 37' R		
5° 41' L		
126° 49' L		173° 26' R

Note: Carter X is a stub driven in the sand about 10' above high water and is to be replaced by pipe

A station Clay Bank
 Pages Rock Light House
 City on white cottage
 Navy water tank
 gable end Twyford Oyster House
 water tank

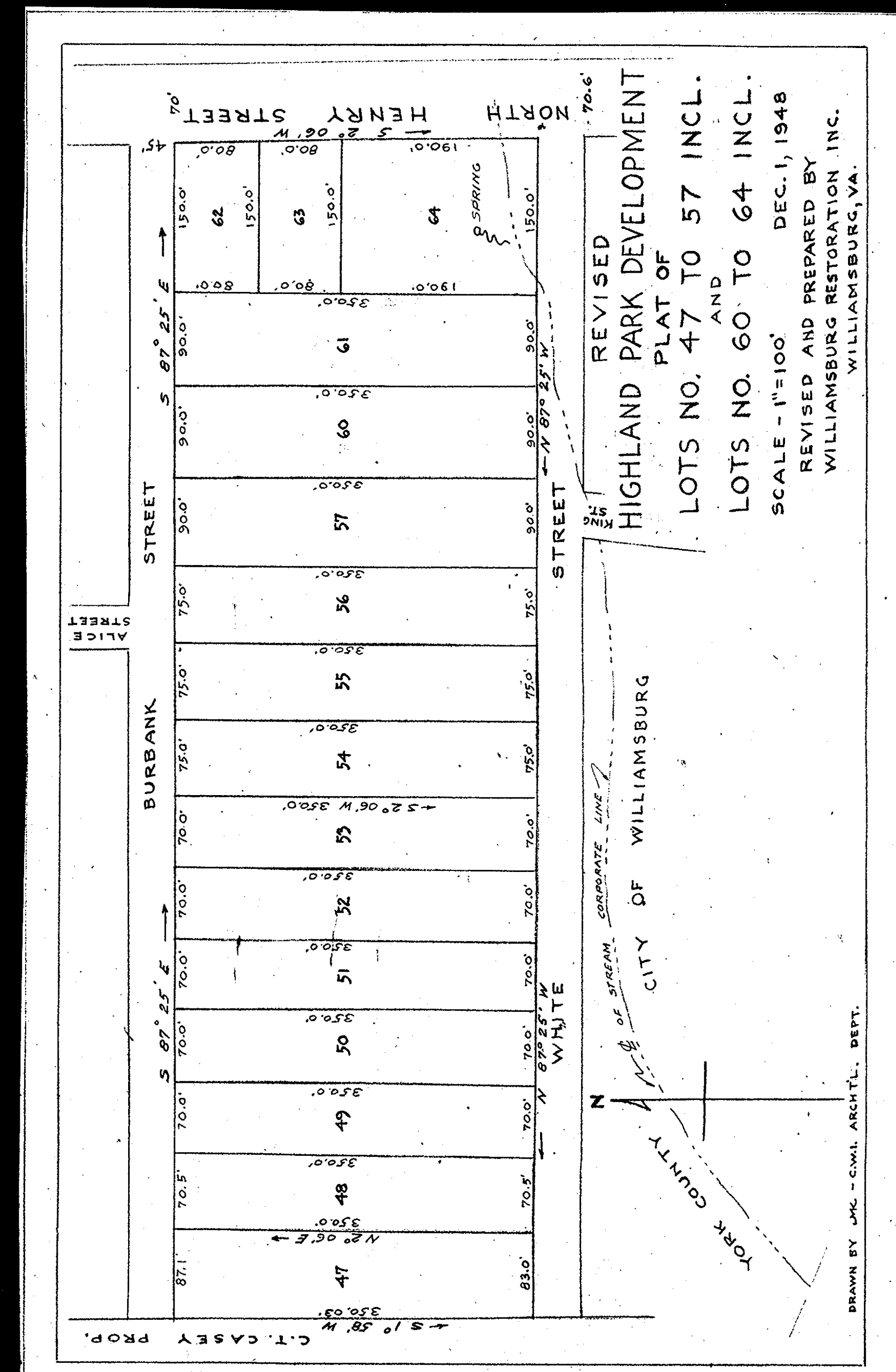
OYSTER PLANTING GROUND

W. R. Hunley and Foster Leigh
IN
York River

District No. 15 York COUNTY

Scale 1/10,000 Nov 3 1948

Surveyed by J. K. Simlin
CERTIFIED SURVEYOR



DRAWN BY J.M.C. - CIVIL ARCHT'L. DEPT.