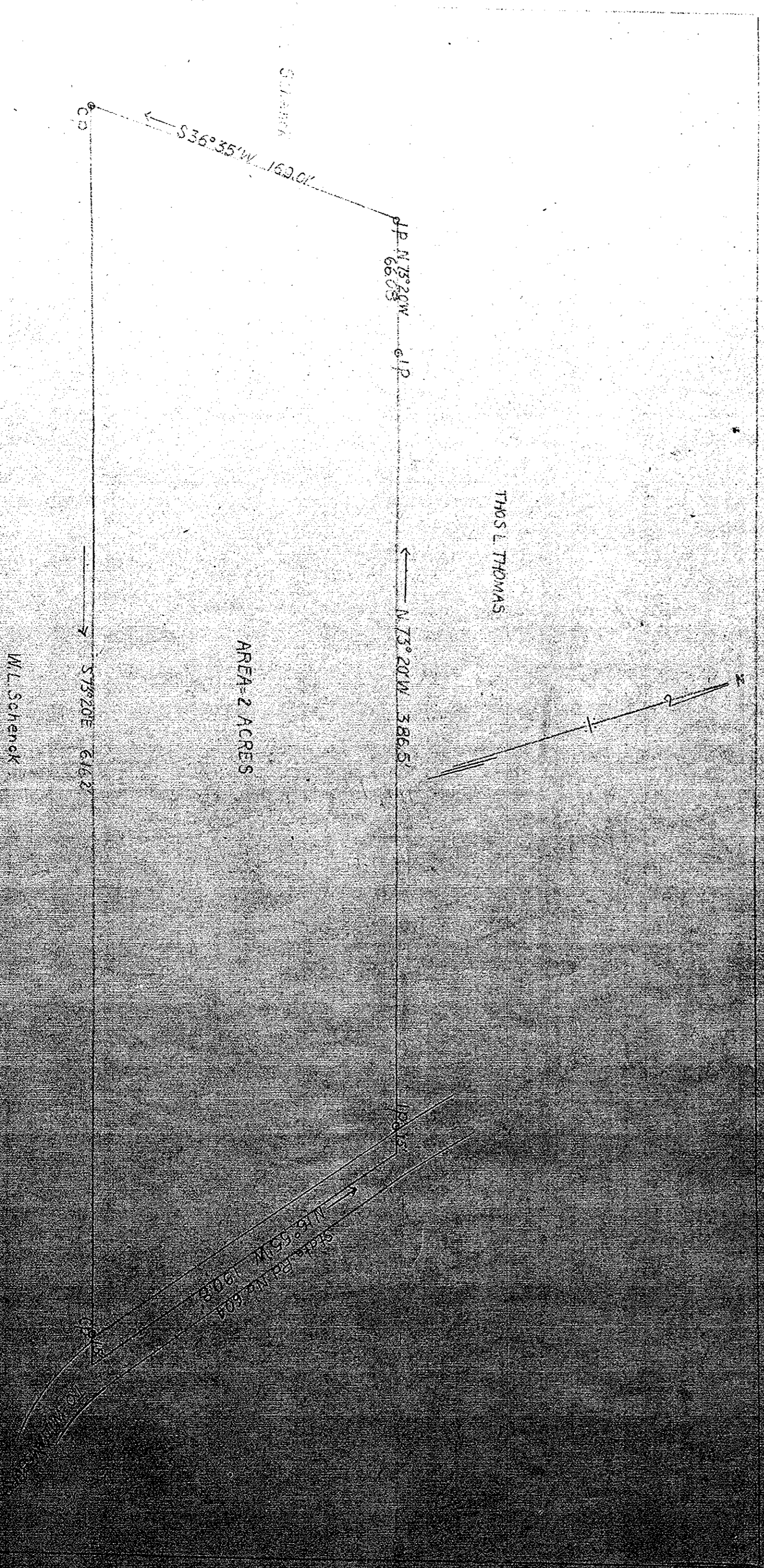


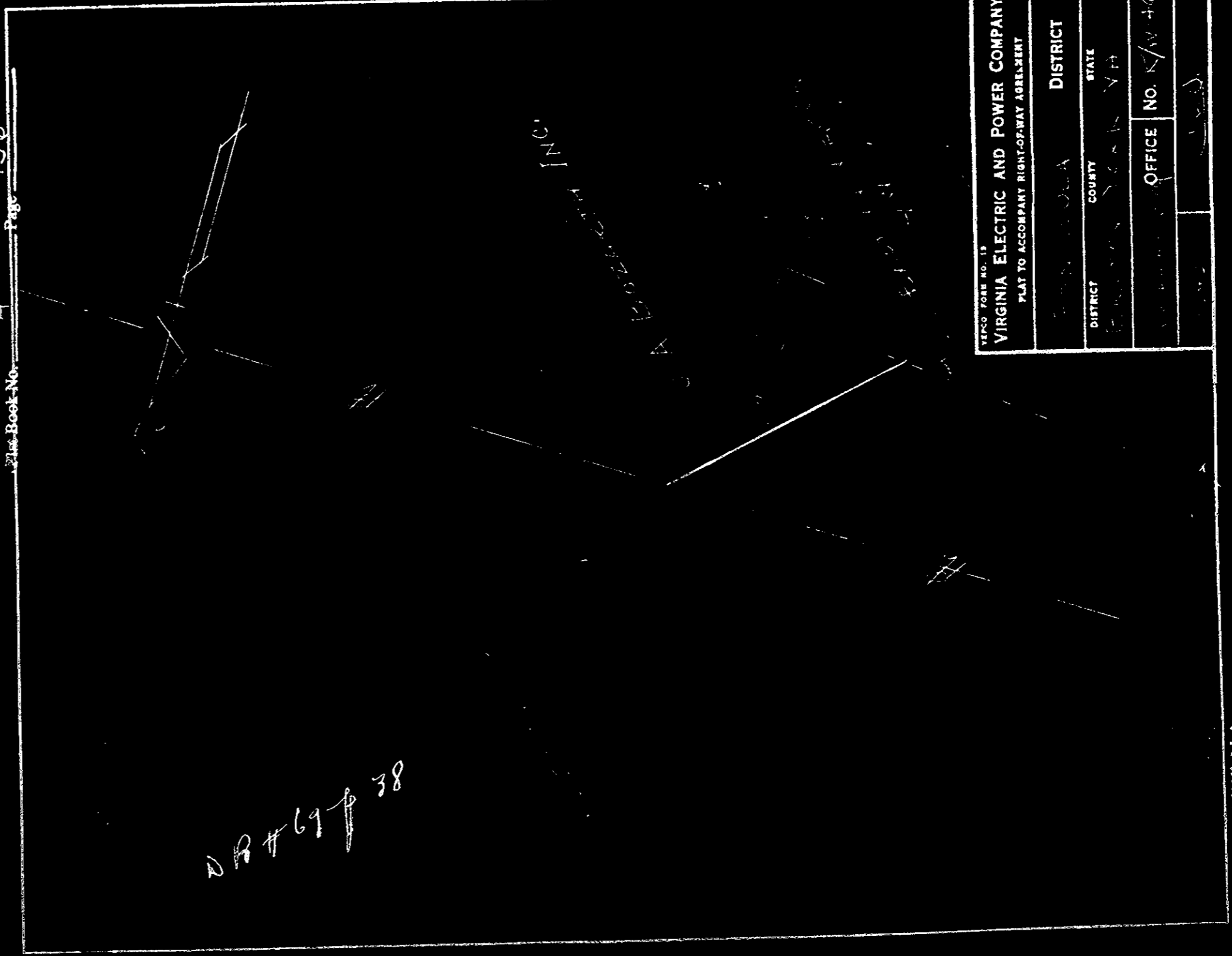
LINE SHOWING CENTER OF ROAD AS INDICATED



PLAT SHOWING SURVEY APPROPRIATE TO THE
 MRS. W.L. SCHENCK'S PROPERTY
 SITUATED IN BRANTON DISTRICT
 VIRGINIA
 OCTOBER 1949

Plat Book No. 4 Page 156

Plat Book No. 4 Page 156



PLAT NO. 15	
VIRGINIA ELECTRIC AND POWER COMPANY	
PLAT TO ACCOMPANY RIGHT-OF-WAY ABSELEMENT	
DISTRICT	
COUNTY	
STATE	
OFFICE NO.	8107-46

DR # 61-p 35

Plat Book No. 4 Page 156

PLAT NO. 15	
VIRGINIA ELECTRIC AND POWER COMPANY	
PLAT TO ACCOMPANY RIGHT-OF-WAY ABSELEMENT	
DISTRICT	
COUNTY	
STATE	
OFFICE NO.	