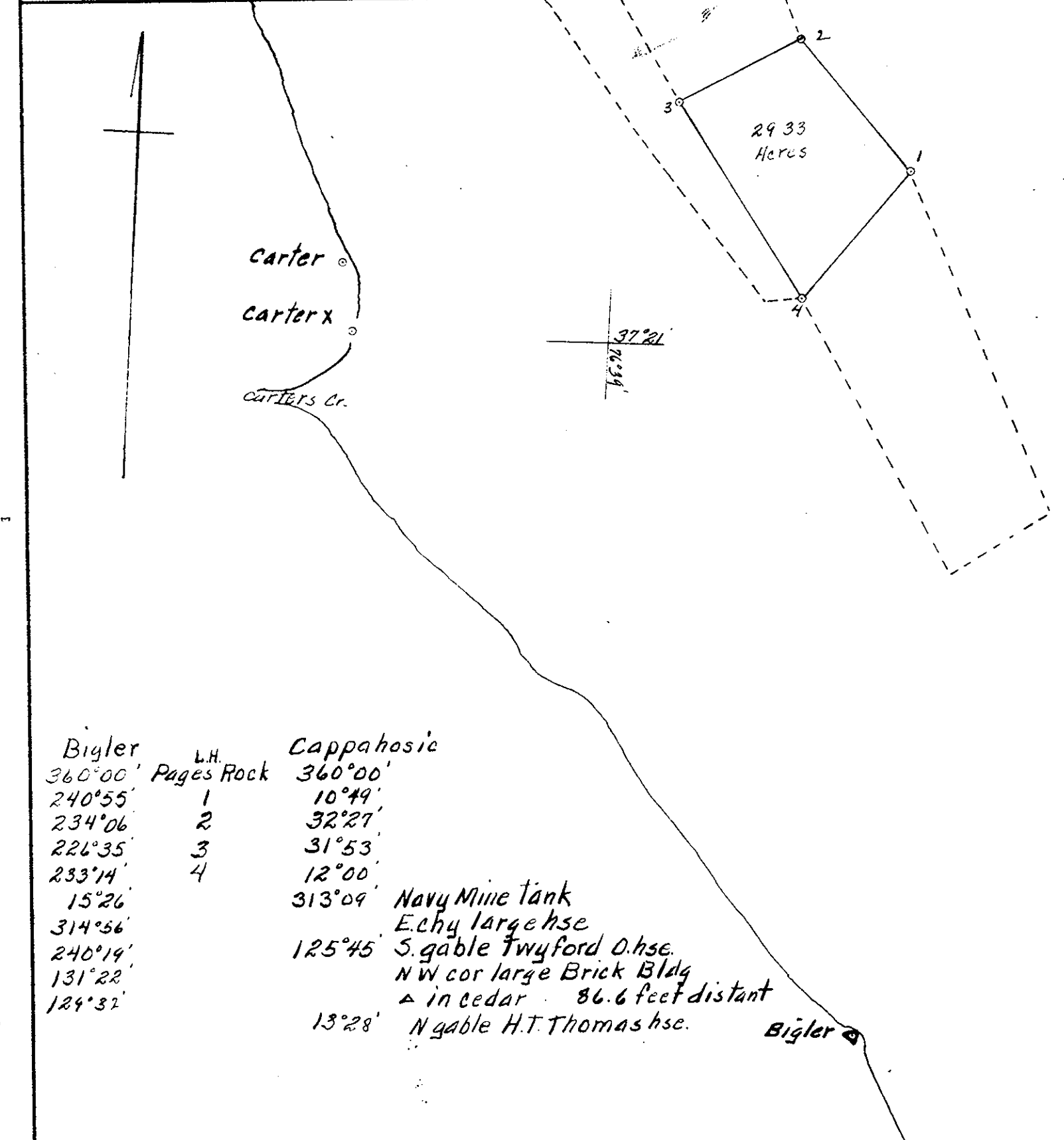


Plat Book No. 4 Page 186  
 "ELM ACRE"  
 The property of:  
 Edward Lee Moore  
 GRAFTON DISTRICT  
 YORK COUNTY, VIRGINIA  
 D.F. Davis, certified land surveyor - Newport News  
 Scale: 1 in. = 50 ft. November 18, 1950

Duplex Blk. 2, p. 321

DATE OF APPLICATION		<b>COMMONWEALTH OF VIRGINIA</b> <b>COMMISSION OF FISHERIES</b>	FOR OFFICE USE	
DATE OF ASSIGNMENT			PLAT NO.	
COUNTY RECORDED IN			MAP NO. 234	
BOOK	PAGE		FILE NO.	



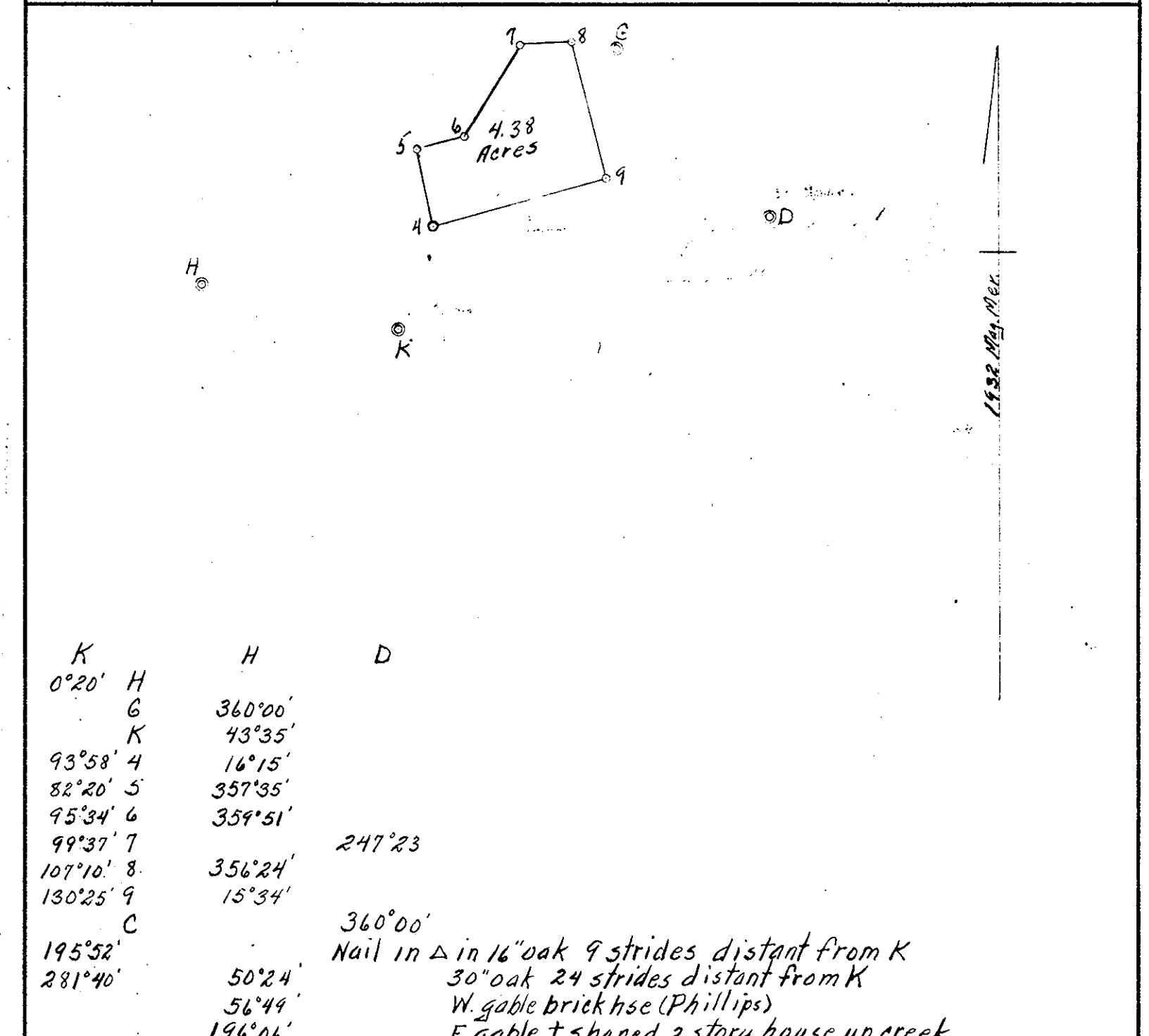
Bigler	L.H.	Cappahosic
360°00'	Pages Rock	360°00'
240°55'	1	10°49'
234°06'	2	32°27'
222°35'	3	31°53'
233°14'	4	12°00'
15°26'		313°09'
314°56'		125°45'
240°19'		13°28'
131°22'		
124°32'		

Navy Mine tank  
 E. gable Twyford D. hse.  
 NW cor large Brick Bldg  
 ▲ in cedar 86.6 feet distant  
 N gable H.T. Thomas hse.

**OYSTER PLANTING GROUND**  
 OF  
Fox Creek Oyster Company  
 IN  
York River (off Carters Creek)  
 District No. 15 York COUNTY  
 Scale 1/10,000 Sept. 14 1950  
 Surveyed by J. K. Sinclair C.L.S. -495-  
 CERTIFIED SURVEYOR

Duplex Blk. 3 p. 332

DATE OF APPLICATION		<b>COMMONWEALTH OF VIRGINIA</b> <b>COMMISSION OF FISHERIES</b>	FOR OFFICE USE	
DATE OF ASSIGNMENT			PLAT NO.	
COUNTY RECORDED IN			MAP NO. 241	
BOOK	PAGE		FILE NO.	



K	H	D
0°20'	G	360°00'
	K	43°35'
93°58' 4		16°15'
82°20' 5		357°35'
95°34' 6		359°51'
99°37' 7		247°23'
107°10' 8		356°24'
130°25' 9		15°34'
	C	360°00'
195°52'		Nail in Δ in 16" oak 9 strides distant from K
281°40'		30" oak 24 strides distant from K
		W. gable brick hse (Phillips)
		E. gable T shaped 2 story house up creek

**OYSTER PLANTING GROUND**  
 OF  
T.F. Green  
 IN  
Cheesemans Creek  
 District No. 15 York COUNTY  
 Scale 5000/1 Oct. 11 1950  
 Surveyed by J. K. Sinclair C.L.S. -495-  
 CERTIFIED SURVEYOR