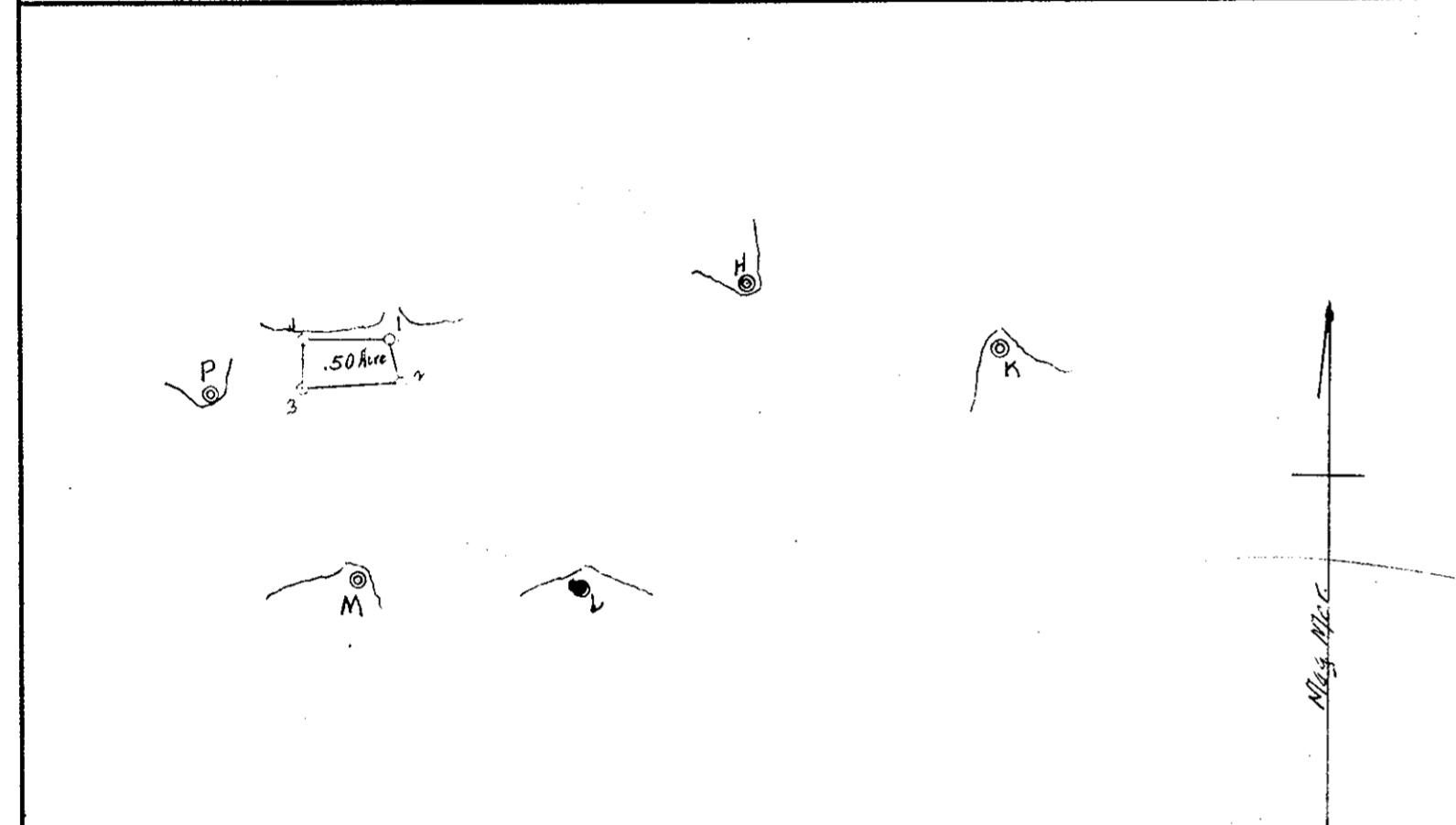


Plat Book No. 4 Page 188
Dexter R.R. p. 332

DATE OF APPLICATION		COMMONWEALTH OF VIRGINIA COMMISSION OF FISHERIES	FOR OFFICE USE	
DATE OF ASSIGNMENT			PLAT NO.	
COUNTY RECORDED IN			MAP NO. 241	
BOOK	PAGE		FILE NO.	

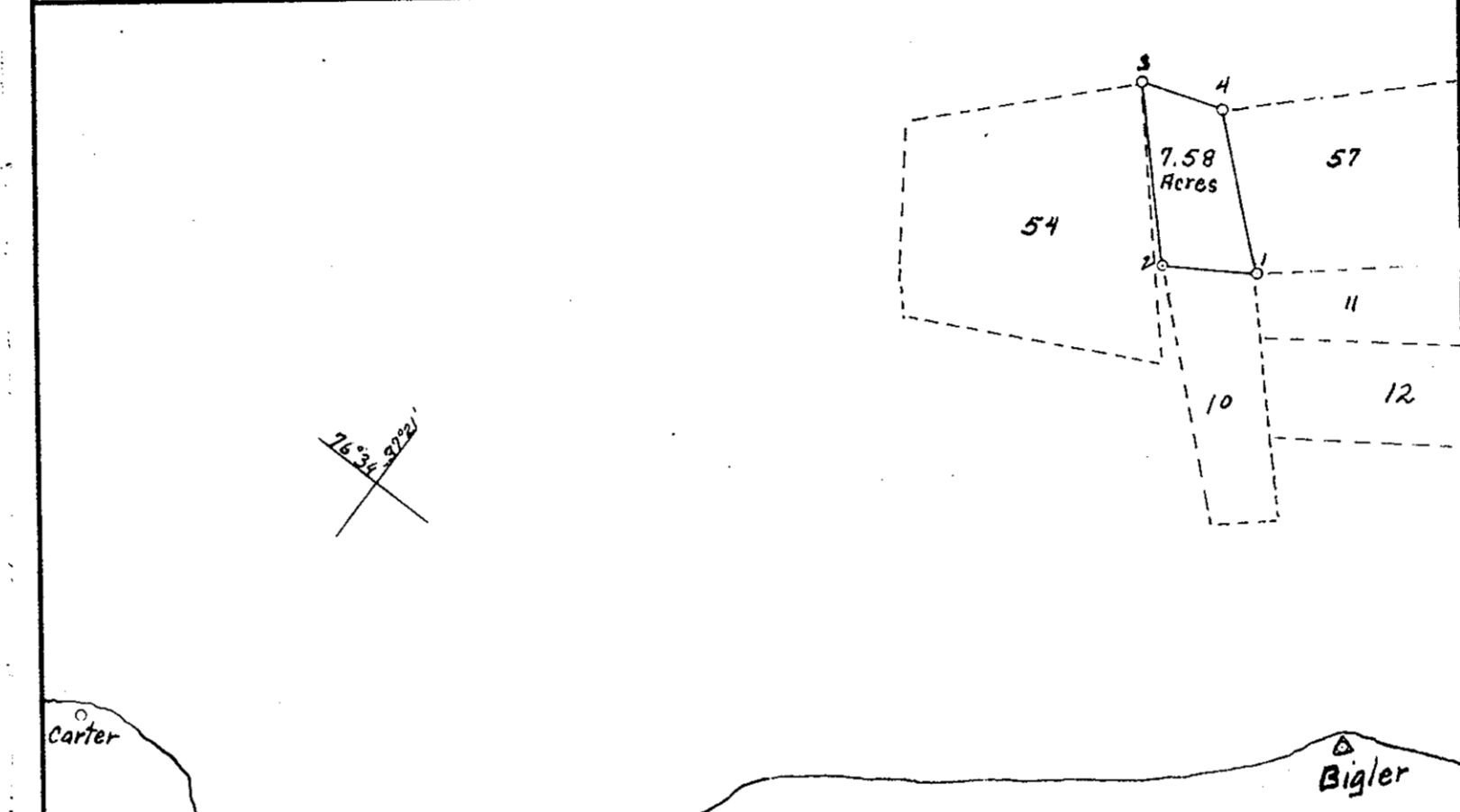


M	P	
360°00'	P	360°00'
46°30'	M	292°06'
50°32'	1	304°37'
22°15'	2	304°52'
25°21'	3	281°41'
55°20'	4	
92°05'		Δ in pine 4 strides distant
110°00'	297°24'	Sta H
100°34'	306°06'	K
115°13'		Wgable large Dutch roof hse
330°16'	301°52'	Brick hse (Phillips)
291°51'		Wchy low hse up creek
		NW. cor Nordstroms hse.

Riparian
OYSTER PLANTING GROUND
OF
Millard B. Thomas
IN
Cheesemans Creek
District No. 15 York COUNTY
Scale 5000
Oct 16 1950
Surveyed by J.F. Simola C.L.S. -495-
CERTIFIED SURVEYOR

Plat Book No. 4 Page 188
Dexter R.R. p. 333

DATE OF APPLICATION		COMMONWEALTH OF VIRGINIA COMMISSION OF FISHERIES	FOR OFFICE USE	
DATE OF ASSIGNMENT			PLAT NO.	
COUNTY RECORDED IN			MAP NO. 234	
BOOK	PAGE		FILE NO.	



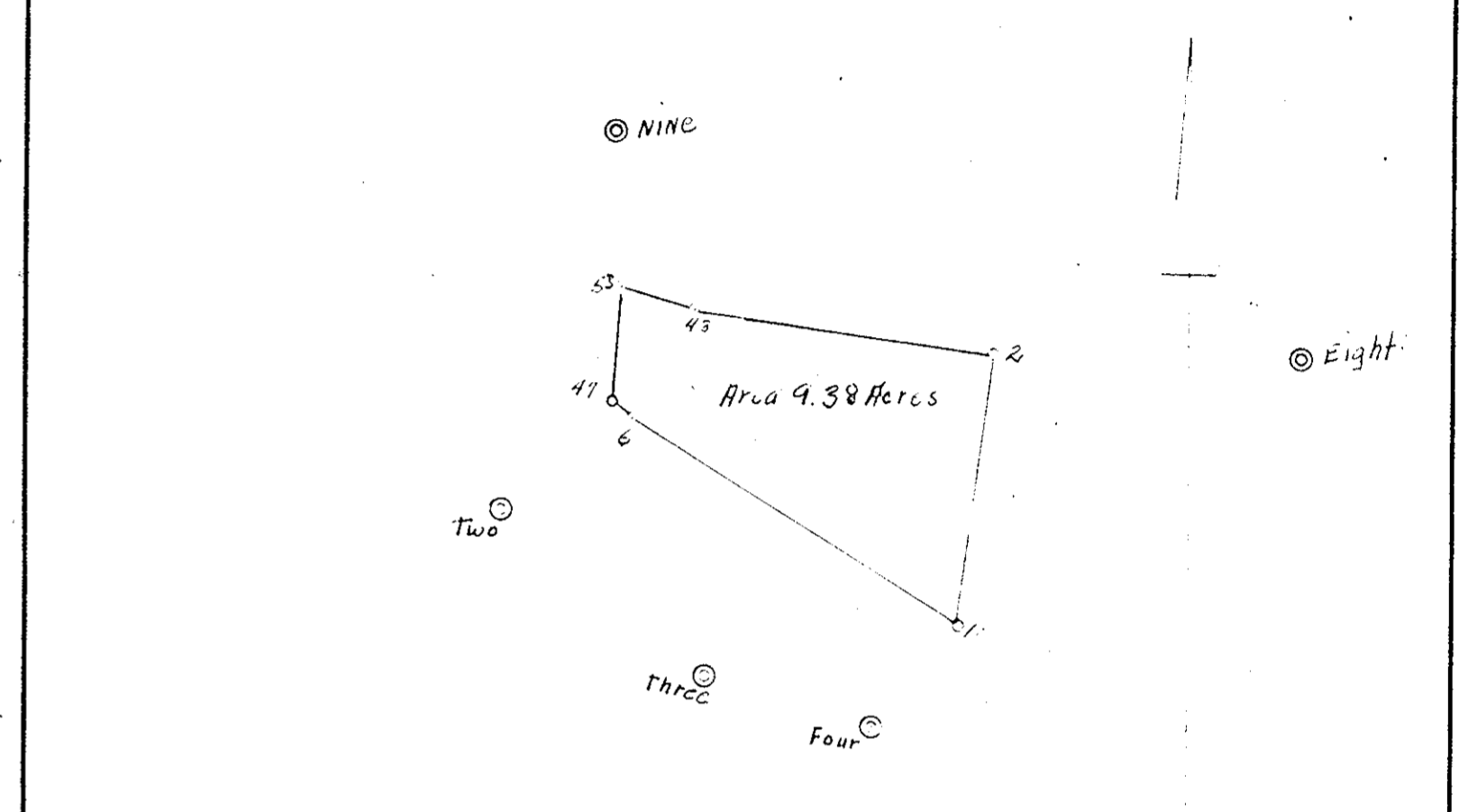
Claybank	Bigler	Bigler
360°00'	Bigler	360°00'
2°33'	Claybank	338°32'
4°26'	1	324°08'
	2	
Bigler	Concord	
360°00'	Pages Rock Light 299°03'	
258°41'	Bigler	360°00'
	3	6°33'
Bigler	Mid	
360°00'	Claybank	360°00'
343°56'	4	326°49'

from survey of plat #10
from survey of plat #54
from survey of plat #57

OYSTER PLANTING GROUND
OF
T.J. Thomas
IN
York River (off Station Bigler)
District No. 15 York COUNTY
Scale 10,000
Oct 2 1950
Surveyed by J.F. Simola C.L.S. -495-
CERTIFIED SURVEYOR

Plat Book No. 4 Page 188
Dexter Book #3 page 333

DATE OF APPLICATION		COMMONWEALTH OF VIRGINIA COMMISSION OF FISHERIES	FOR OFFICE USE	
DATE OF ASSIGNMENT			PLAT NO.	
COUNTY RECORDED IN			MAP NO. 241	
BOOK	PAGE		FILE NO.	



Two	Four
360°00'	360°00'
293°27'	21°11'
343°25'	98°21'
One	Two
195°33'	360°00'
163°11'	43
175°45'	47
160°55'	53
Eight	Four
360°00'	360°00'
89°23'	77°37'

these notes taken from Fred E. Kuedigers surveys of surrounding leases.
Station two is a concrete block about 2" underground Stations Nine, Eight & Four were destroyed and have been replaced by pipes by this survey

OYSTER PLANTING GROUND
OF
J.F. Hall
IN
Cheesemans Creek
District No. 15 York COUNTY
Scale 5000
Oct 31 1950
Surveyed by J.F. Simola C.L.S. -495-
CERTIFIED SURVEYOR