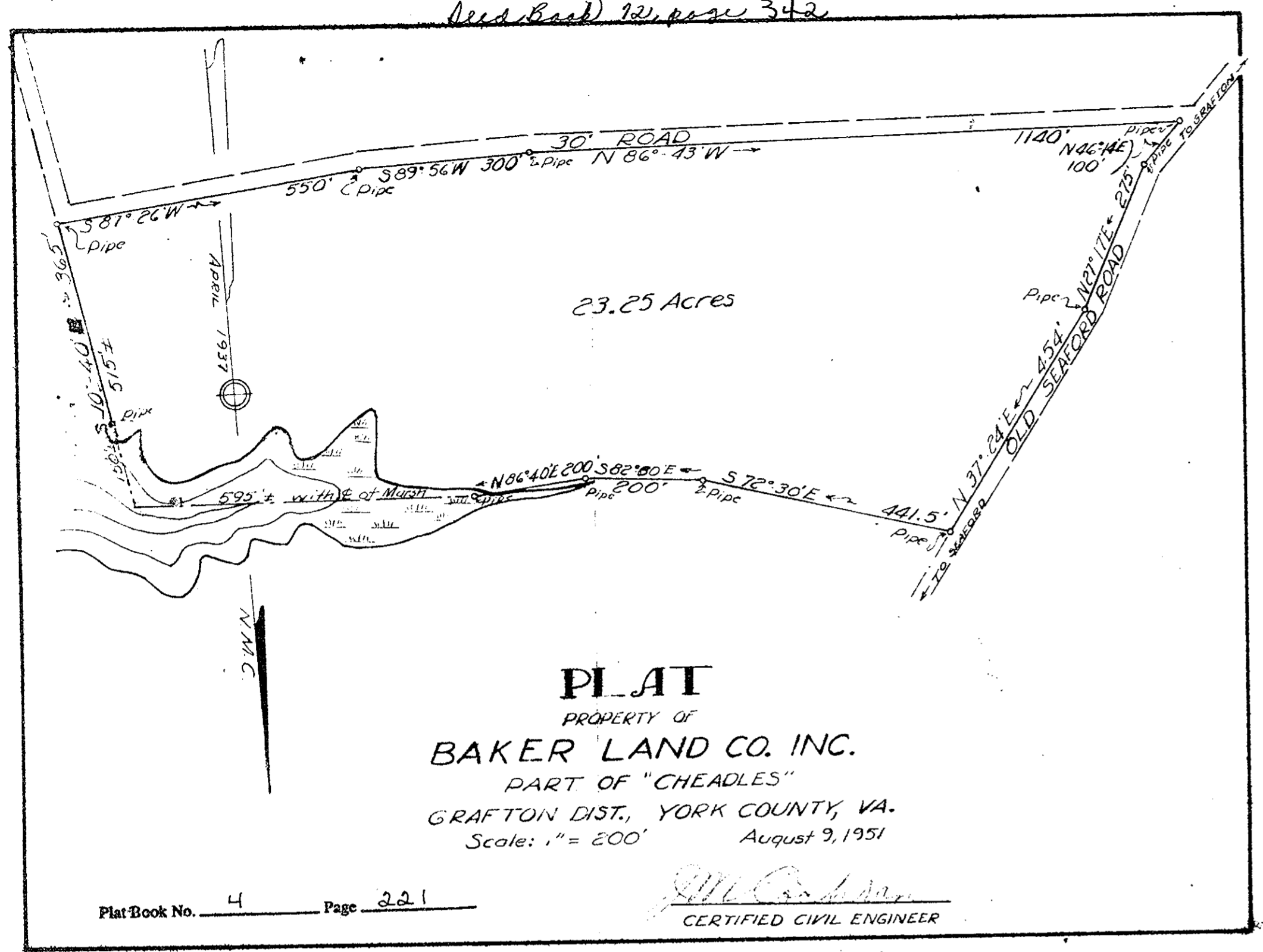


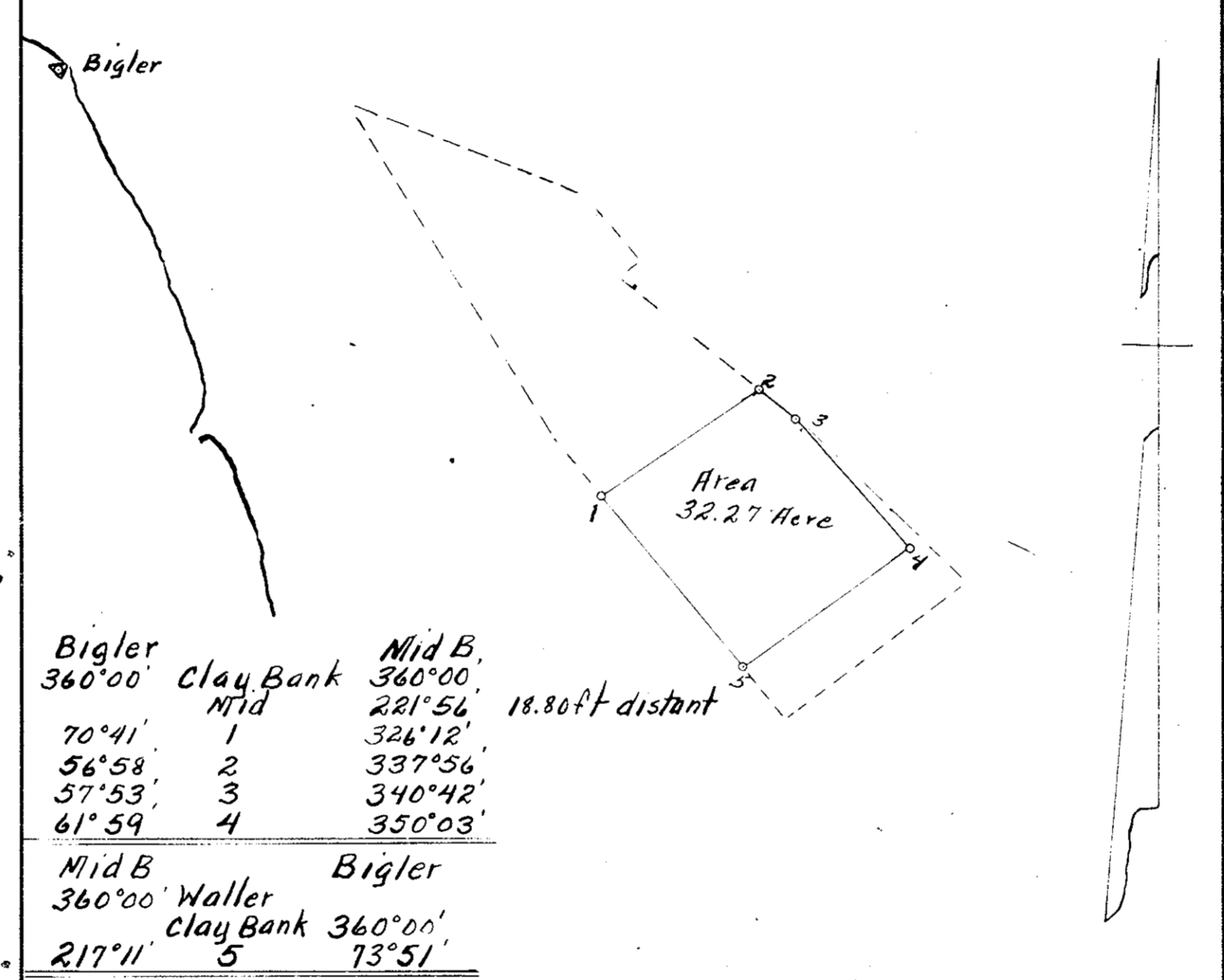
See Book 12, page 342



Plat Book No. 4 Page 221

Oyster Bank 3, p. 355

DATE OF APPLICATION	COMMONWEALTH OF VIRGINIA COMMISSION OF FISHERIES	FOR OFFICE USE
DATE OF ASSIGNMENT		PLAT NO.
COUNTY RECORDED IN		MAP NO. 234
BOOK PAGE		FILE NO.



Note: this plat made to effect transfer of a part of old plat 59 from E.W. Maynard to C.C. Harris. Broken lines show old plat 59

Mid B

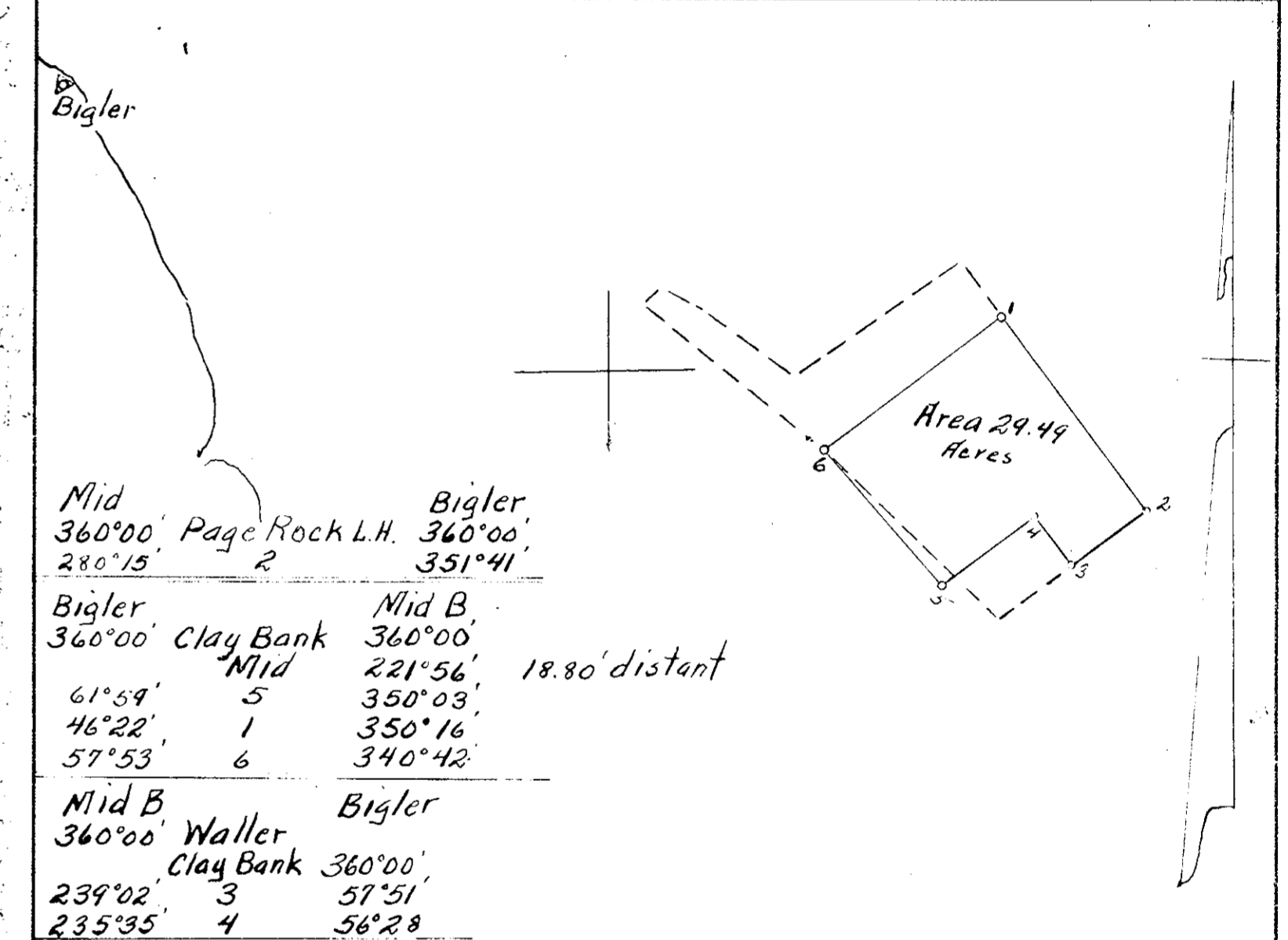
OYSTER PLANTING GROUND
OF
C.C. Harris
IN
York River
District No. 15 York COUNTY
Scale 10,000 Aug 23 1951
Surveyed by J.K. Sinclear C.L.S.-445
CERTIFIED SURVEYOR

Plat Book No. 4 Page 221

3A-29 1A-35

Oyster Bank 3, p. 355

DATE OF APPLICATION	COMMONWEALTH OF VIRGINIA COMMISSION OF FISHERIES	FOR OFFICE USE
DATE OF ASSIGNMENT		PLAT NO.
COUNTY RECORDED IN		MAP NO. 234
BOOK PAGE		FILE NO.



Note: This plat made to transfer the oyster ground shown from E.W. Maynard to E.P. Roane. This ground comes out of old plat 61 and a small piece out of old plat 59. The broken line shown is old plat 61.

Stations Bigler & Waller are U.S.G.S. concrete monuments. Sta Mid is a V.F.C. concrete monument.

Mid B

OYSTER PLANTING GROUND
OF
E.P. Roane
IN
York River (off Camp Perry)
District No. 15 York COUNTY
Scale 10,000 Aug 23 1951
Surveyed by J.K. Sinclear C.L.S.-445
CERTIFIED SURVEYOR

Plat Book No. 4 Page 221

3A-31 1A-35-37