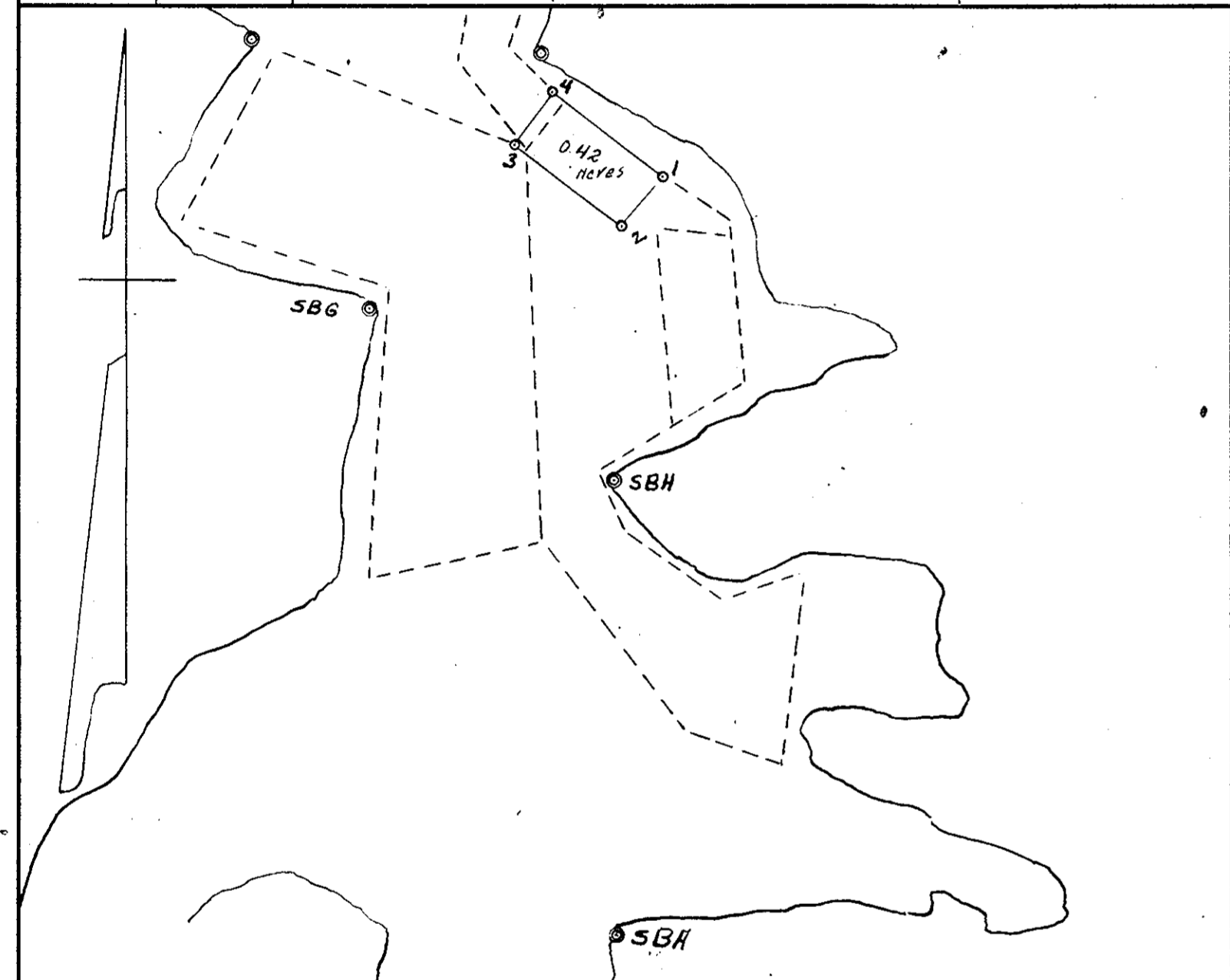


Oyster Book 3, page 362

Oyster Book 3, page 362

Oyster Book 3, page 363

DATE OF APPLICATION	COMMONWEALTH OF VIRGINIA COMMISSION OF FISHERIES	FOR OFFICE USE
DATE OF ASSIGNMENT		PLAT NO.
COUNTY RECORDED IN		MAP NO. 246
BOOK PAGE		FILE NO.

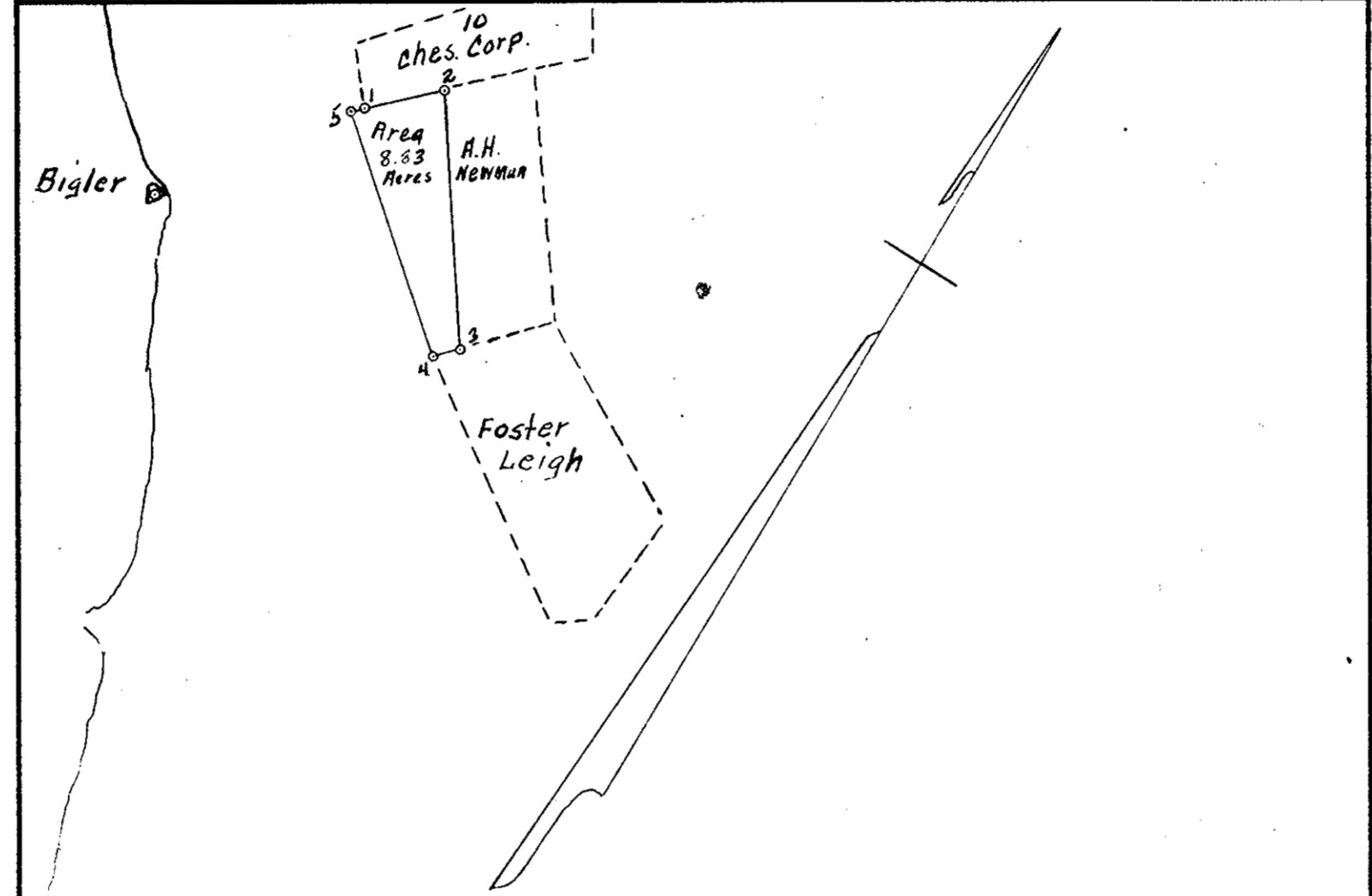


SBH 360°00' SBG 33°24'
 189°14' SBH 360°00'
 182°10' 1 300°35'
 163°33' 2 306°53'
 171°13' 3 276°36'
 2°30' 4 275°02'
 160°33' 43°11' Ngable Geo Morse hse
 72°32' 227°28' Flag pole
 S.E. edge S.E. column on porch

0.05 Acres comes out of 0.70 Acres, plat No 13, F.L. Hogge & Bro.
 0.37 Acres comes out of 3.62 Acres, plat file 6474,
 Geo E. Morse

Riparian OYSTER PLANTING GROUND
 OF
Axel T. Mattson
 IN
Warmleys Creek
 District No. 15 York COUNTY
 Scale 1/2500 May 23 1951
 Plat Book No. 4 Page 233
 Surveyed by J.K. Sinclair C.S. 495
 CERTIFIED SURVEYOR

DATE OF APPLICATION	COMMONWEALTH OF VIRGINIA COMMISSION OF FISHERIES	FOR OFFICE USE
DATE OF ASSIGNMENT		PLAT NO.
COUNTY RECORDED IN		MAP NO. 234
BOOK PAGE		FILE NO.



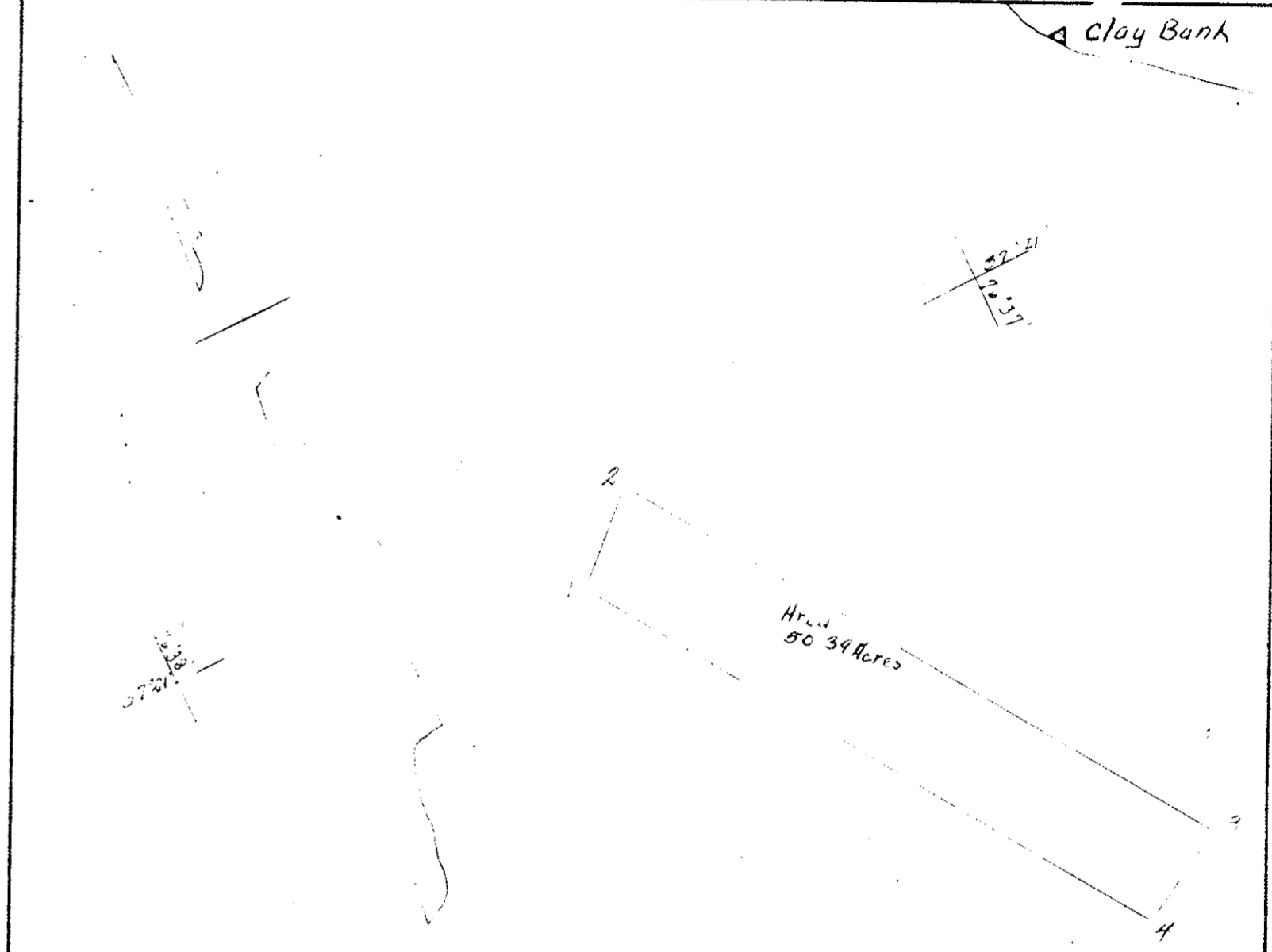
Bigler 360°00'	Clay Bank	Clay Bank 360°00'	Mid B 360°00'
338°32'	Bigler 1	2°33'	
340°47'	2	3°13'	
29°46'	3	354°26'	
32°00'	4		
61°58'	Mid	319°26'	
302°17'		221°56'	12.80 ft distant
358°50'		81°42'	Pages Rock L. H.
		329°58'	gable Twyford O. Hse
		350°12'	chy 2 story hse above Sta. Clay Bank

Note: this plat takes the place of and includes 0.74 Acres & 1.26 Acres
 See plat File 4329

Plat Book No. 4 Page 233

OYSTER PLANTING GROUND
 OF
E.W. Maynard
 IN
York River (off Bigler)
 District No. 15 York COUNTY
 Scale 1/1000 Aug 23 1951
 Surveyed by J.K. Sinclair C.S. 495
 CERTIFIED SURVEYOR

DATE OF APPLICATION	COMMONWEALTH OF VIRGINIA COMMISSION OF FISHERIES	FOR OFFICE USE
DATE OF ASSIGNMENT		PLAT NO.
COUNTY RECORDED IN		MAP NO. 234
BOOK PAGE		FILE NO.



Bigler 360°00'	Clay Bank	Mid 360°00'
354°50'	1	345°05'
354°26'	2	347°05'
22°41'	3	3°04'
24°16'	4	0°41'
61°57'		81°35'
77°23'		111°14'
16°43'		17°51'
302°16'		
143°21'		

81°35' Page Rock Light
 111°14' Navy tank
 17°51' dormer window low Geo Lawson,
 gable Twyford Oyster Hse
 NW corner Bigler hse
 11°15' gable elevator
 147°49' Δ in 12" pine 3 steps

Plat Book No. 4 Page 233

OYSTER PLANTING GROUND
 OF
I.R. Blake
 IN
York River (middle ground off Clay Bank)
 District No. 15 York COUNTY
 Scale 1/1000 July 3 1951
 Surveyed by J.K. Sinclair C.S. 495
 CERTIFIED SURVEYOR