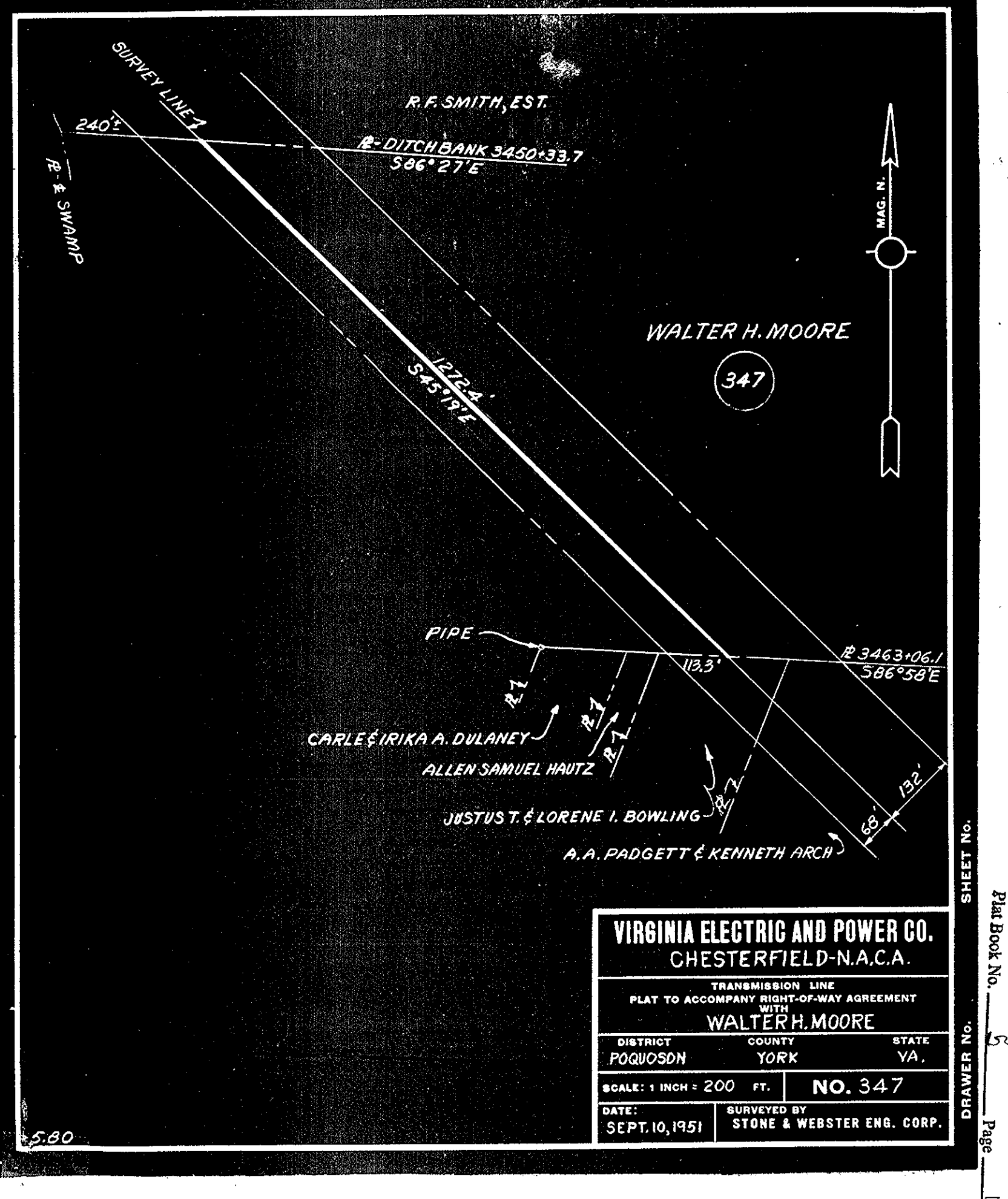
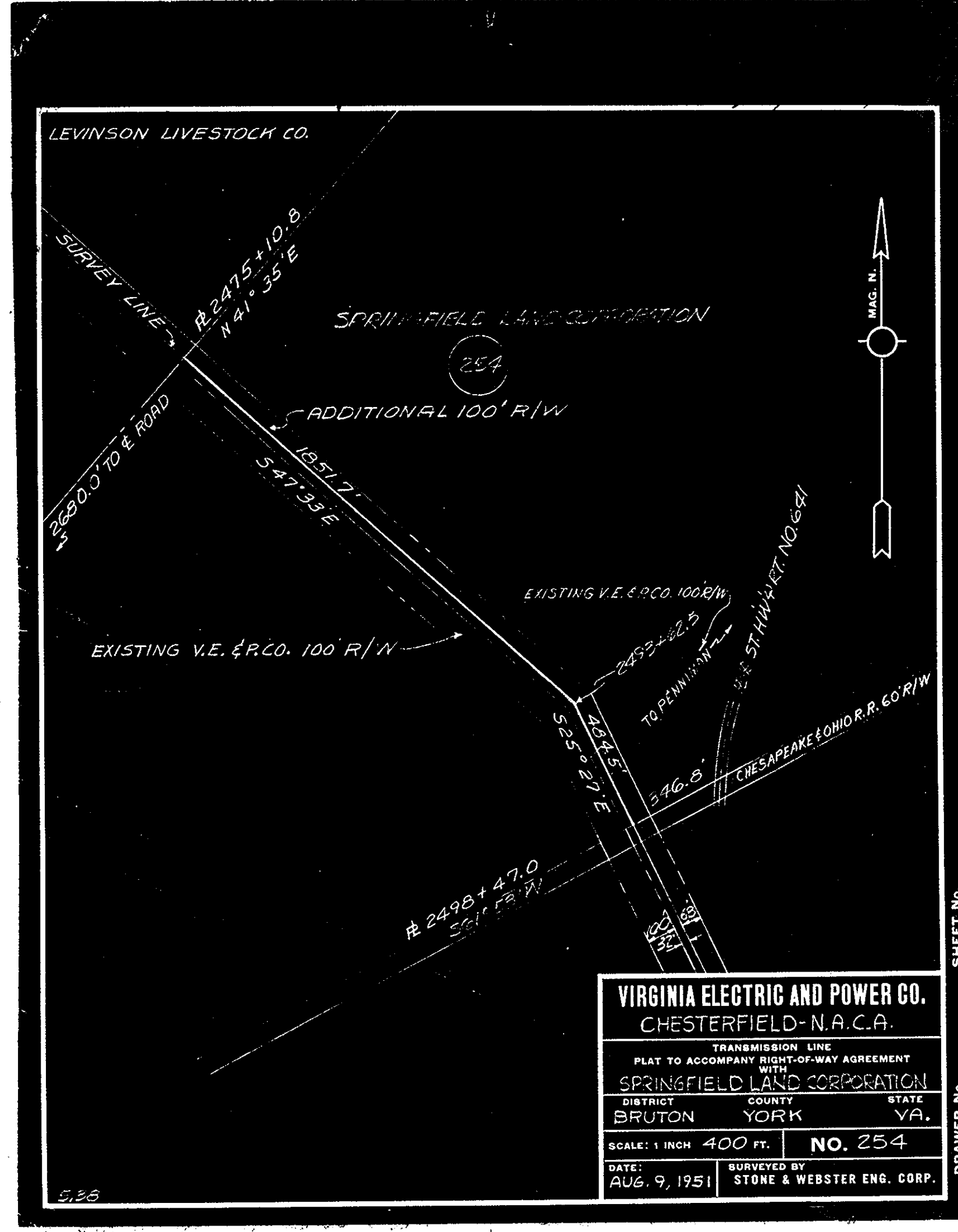


VIRGINIA ELECTRIC AND POWER CO.
CHESTERFIELD-N.A.C.A.
 TRANSMISSION LINE
 PLAT TO ACCOMPANY RIGHT-OF-WAY AGREEMENT
 WITH
COUNTY OF YORK
 DISTRICT COUNTY STATE
 GRAFTON YORK VA.
 SCALE: 1 INCH = 500 FT. **NO. 328**
 DATE: NOV. 29, 1951 SURVEYED BY STONE & WEBSTER ENG. CORP.



VIRGINIA ELECTRIC AND POWER CO.
CHESTERFIELD-N.A.C.A.
 TRANSMISSION LINE
 PLAT TO ACCOMPANY RIGHT-OF-WAY AGREEMENT
 WITH
WALTER H. MOORE
 DISTRICT COUNTY STATE
 POQUOSON YORK VA.
 SCALE: 1 INCH = 200 FT. **NO. 347**
 DATE: SEPT. 10, 1951 SURVEYED BY STONE & WEBSTER ENG. CORP.



VIRGINIA ELECTRIC AND POWER CO.
CHESTERFIELD-N.A.C.A.
 TRANSMISSION LINE
 PLAT TO ACCOMPANY RIGHT-OF-WAY AGREEMENT
 WITH
SPRINGFIELD LAND CORPORATION
 DISTRICT COUNTY STATE
 BRUTON YORK VA.
 SCALE: 1 INCH = 400 FT. **NO. 254**
 DATE: AUG. 9, 1951 SURVEYED BY STONE & WEBSTER ENG. CORP.

