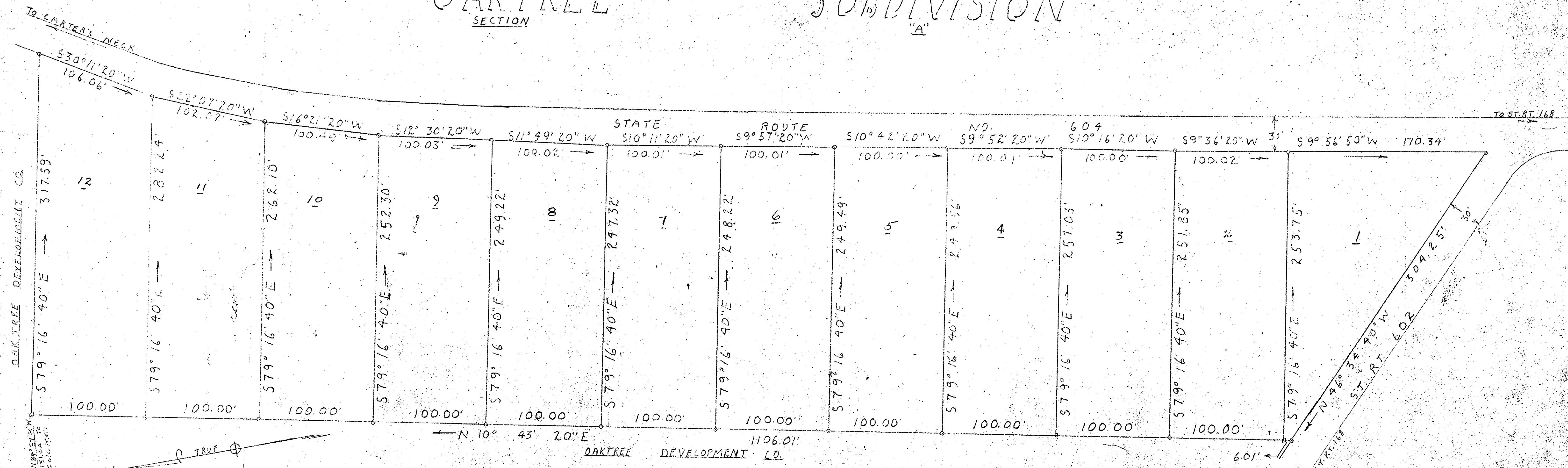


OAKTREE SUBDIVISION SECTION "A"



PLAT SHOWING SUBDIVISION OF PART OF TRACT OF LAND BELONGING TO
 OAKTREE DEVELOPMENT COMPANY
 LOCATED IN BRUTON DISTRICT YORK COUNTY VIRGINIA, SCALE 1" = 50'
 SURVEYED FEB. 1955 LEGEND: IRON PIPE \odot
 CON. MON \square
 NOTE: ALL LOTS CONTAIN MORE THE 1/2 ACRE AND FRONT ON STATE ROAD

Filed March 12, 1955
 W. D. Bryant, Clerk



Sig. Wetherill D. Thomas

APPROVED
 YORK COUNTY BOARD OF SUPERVISORS
 BY *[Signature]*
 PLAT APPROVING AGENT
 DATE 3-12-55
 VARIATIONS APPROVED
 DATE