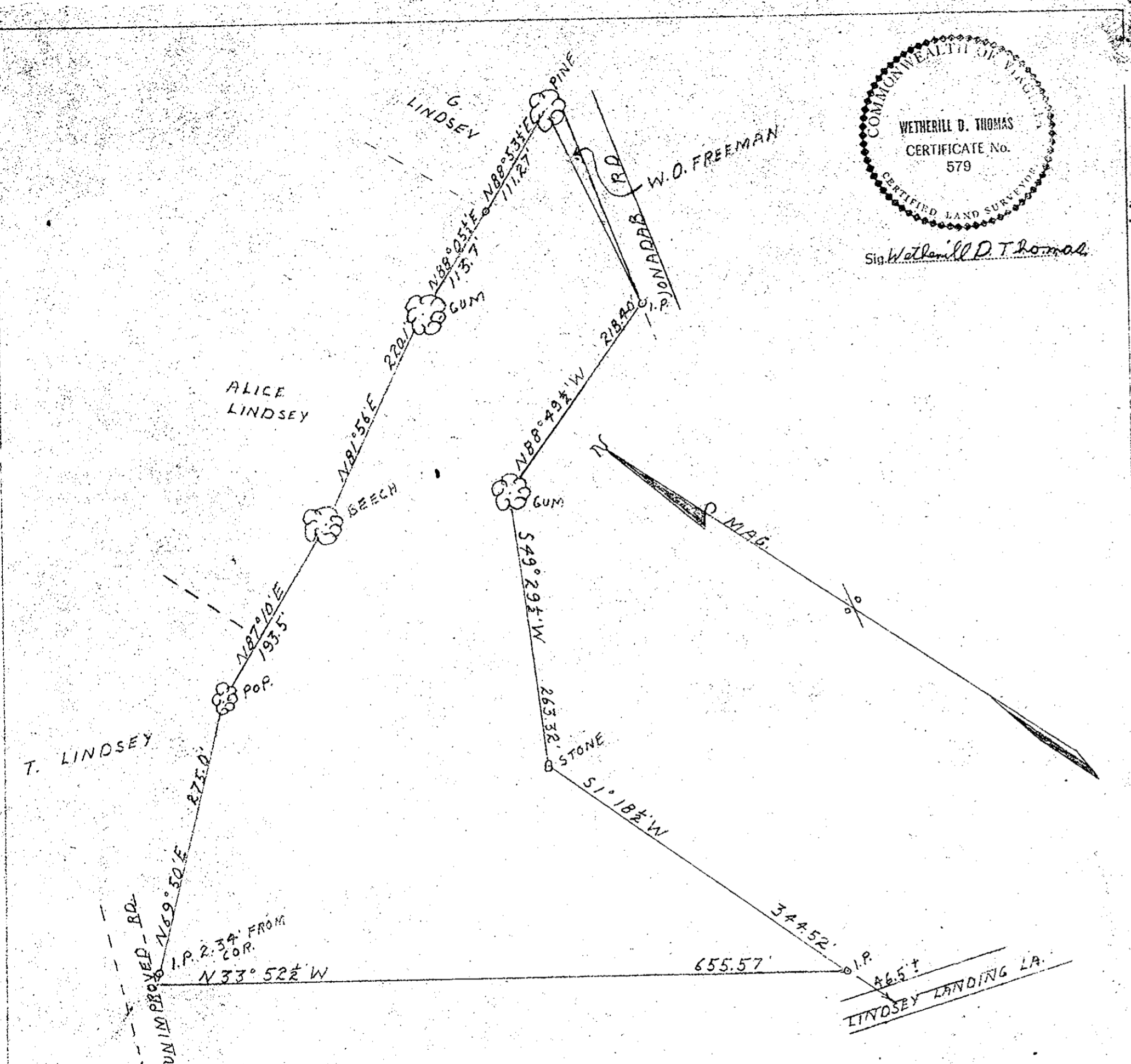




Sir Wetherill D. Thomas

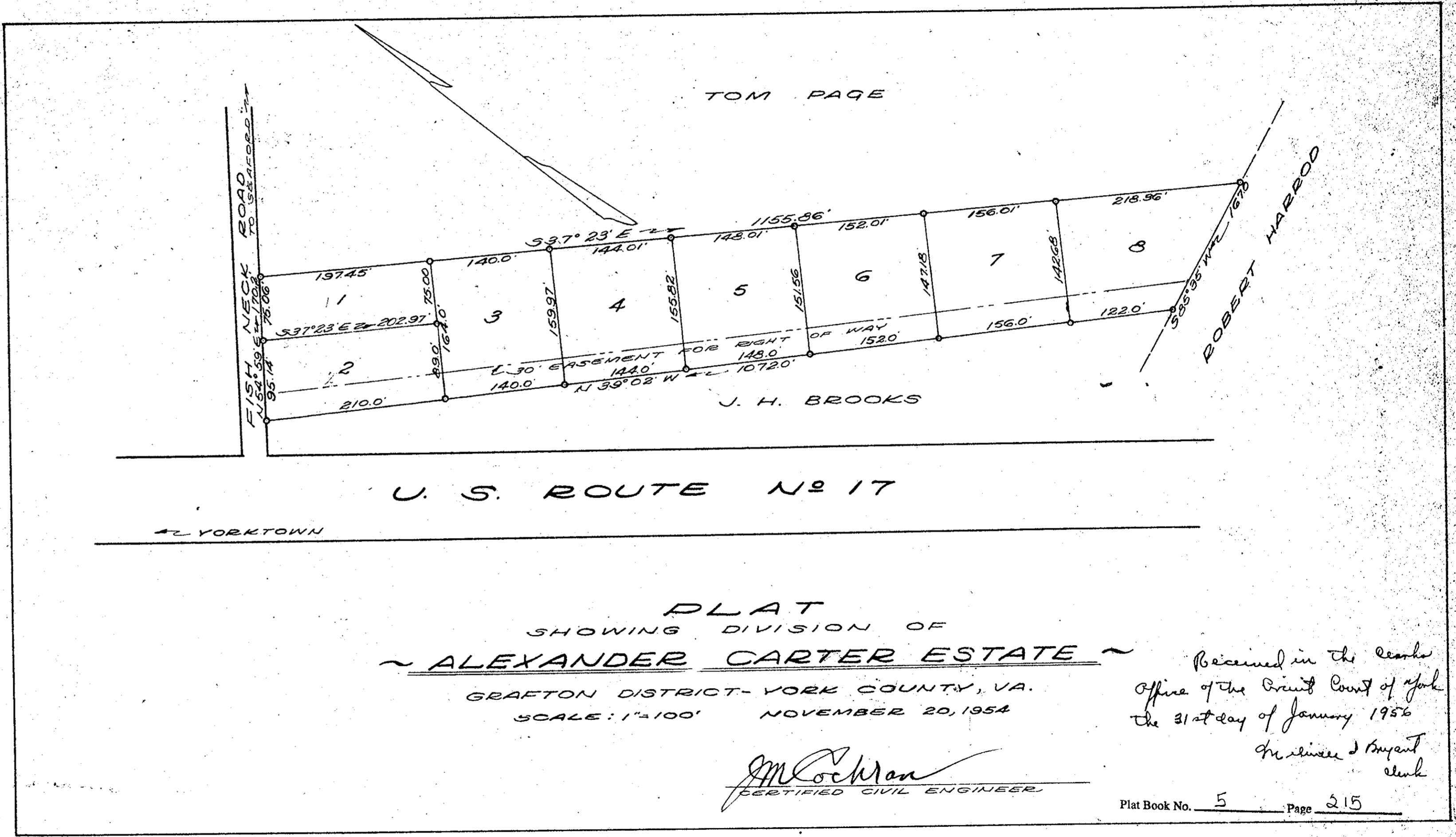


Plat Book No. 5 Page 215

PLAT SHOWING PARCEL OF LAND BELONGING TO W.D. FREEMAN LOCATED ON JONADAB RD YORK COUNTY VA SCALE 1" = 100' AREA = 4.94 A SURVEYED JAN 1956 REF: SURVEY BY DAYTON WETHERILL SCHENCK D.B. 22 PAGE 3

Filed February 10, 1956 W.D. Bryant, Clerk

See Book 106 page 29.



PLAT SHOWING DIVISION OF ALEXANDER CARTER ESTATE

GRAFTON DISTRICT - YORK COUNTY, VA. SCALE: 1" = 100' NOVEMBER 20, 1954

J.M. Lockman CERTIFIED CIVIL ENGINEER

Received in the Clerk's Office of the Circuit Court of York the 31st day of January 1956 W.D. Bryant Clerk

Plat Book No. 5 Page 215