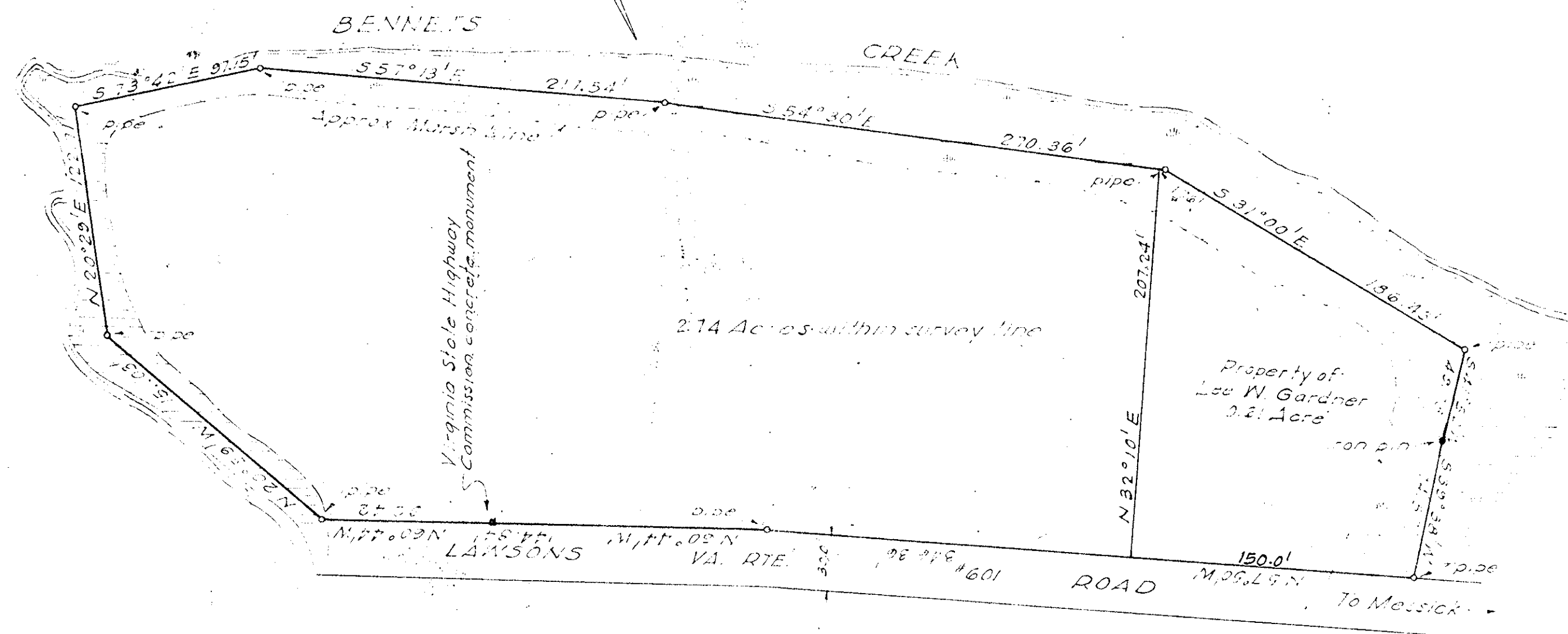
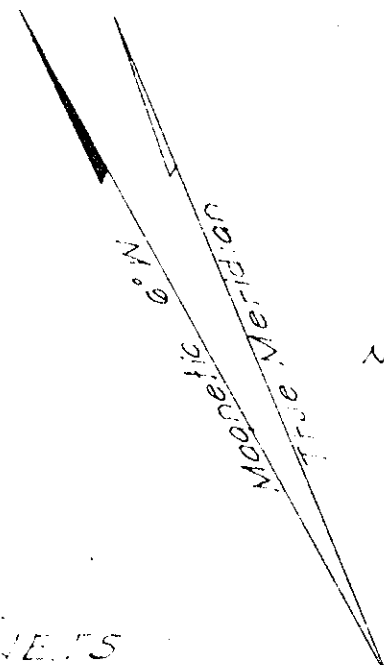


PLAT OF THE PROPERTY OF:  
LAWRENCE & ERNEST W. EVANS, SR.

POQUOSON DISTRICT  
YORK COUNTY, VIRGINIA  
Scale: 1" = 60' JUL 18, 1949

RECYCLE BAGG & SURVEYOR  
MOUNTAIN VIEW, VIRGINIA  
*R. R.*

Note: Bearings shown on this  
plat refer to Magnetic North.



Filed in the Clerk's Office the 7th day of August 1949

Teste:  
MELVILLE J. BRYANT, Clerk  
*Melville J. Bryant*  
D. G.