

LAND SHOWN IS A PORTION OF SHADY BANKS OR CHURCHILL TRACT.

PARCEL "A" - 143.21 AC.  
 D.B. 68-PG. 240  
 P.B. 1-PG. 273  
 D.B. 67-PG. 336  
 P.B. 4-PG. 130  
 D.B. 69-PG. 342

PARCEL "B" - 3.137 AC.  
 D.B. 68-PG. 240  
 P.B. 1-PG. 273

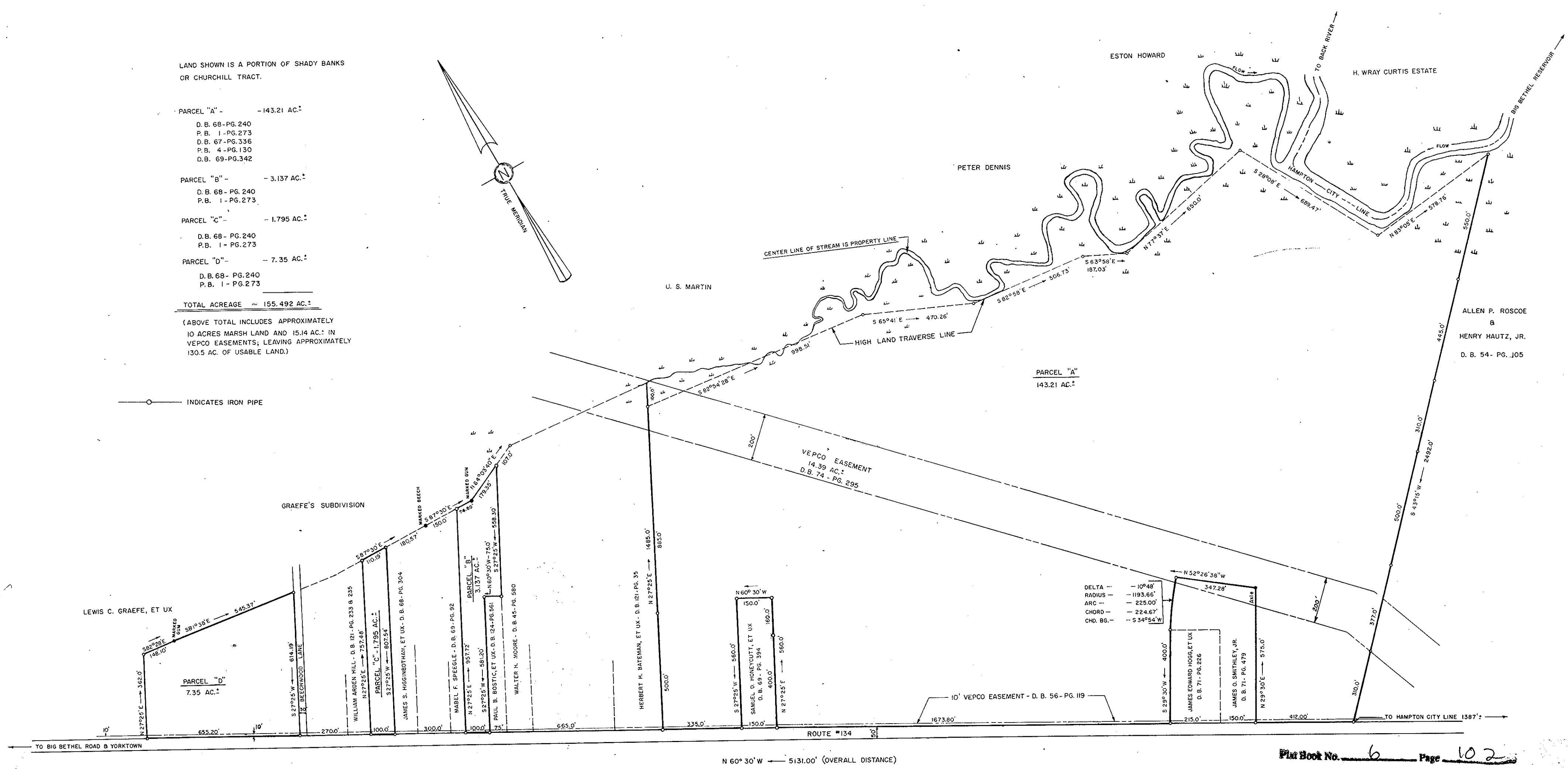
PARCEL "C" - 1.795 AC.  
 D.B. 68-PG. 240  
 P.B. 1-PG. 273

PARCEL "D" - 7.35 AC.  
 D.B. 68-PG. 240  
 P.B. 1-PG. 273

TOTAL ACREAGE - 155.492 AC.

(ABOVE TOTAL INCLUDES APPROXIMATELY 10 ACRES MARSH LAND AND 15.14 AC. IN VEPCO EASEMENTS; LEAVING APPROXIMATELY 130.5 AC. OF USABLE LAND.)

INDICATES IRON PIPE



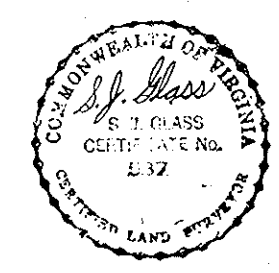
DELTA	109.48'
RADIUS	1193.66'
ARC	225.00'
CHORD	224.67'
CHD. BG.	3.34°54' W

Plat Book No. 6 Page 102

Filed in the Clerk's Office the 26 day of Sept 1960

Teste:  
 MELVILLE I. BRYANT, Clerk  
*M. I. Bryant* D.B.

See DB, 143 Page 282



PLAT SHOWING PROPERTY OF  
 KENNETH ARCH  
 &  
 ESTATE OF A. A. PADGETT

LOCATED ON  
 STATE ROUTE 134, BETHEL DISTRICT, YORK COUNTY, VIRGINIA  
 SCALE: 1" = 200' SEPTEMBER 12, 1959

S. J. GLASS & ASSOCIATES  
 ENGINEERS & SURVEYORS - VIRGINIA PENINSULA  
 FIELD WORK BY: L.B., JR. - S.J.G. F.B. 1 PG. 97  
 DRAWN BY: ESG CHECKED BY: SJG