

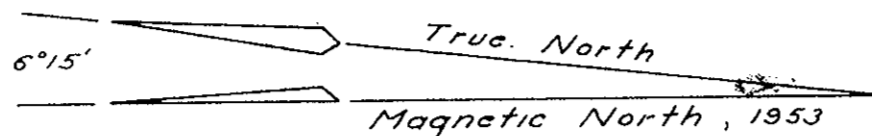
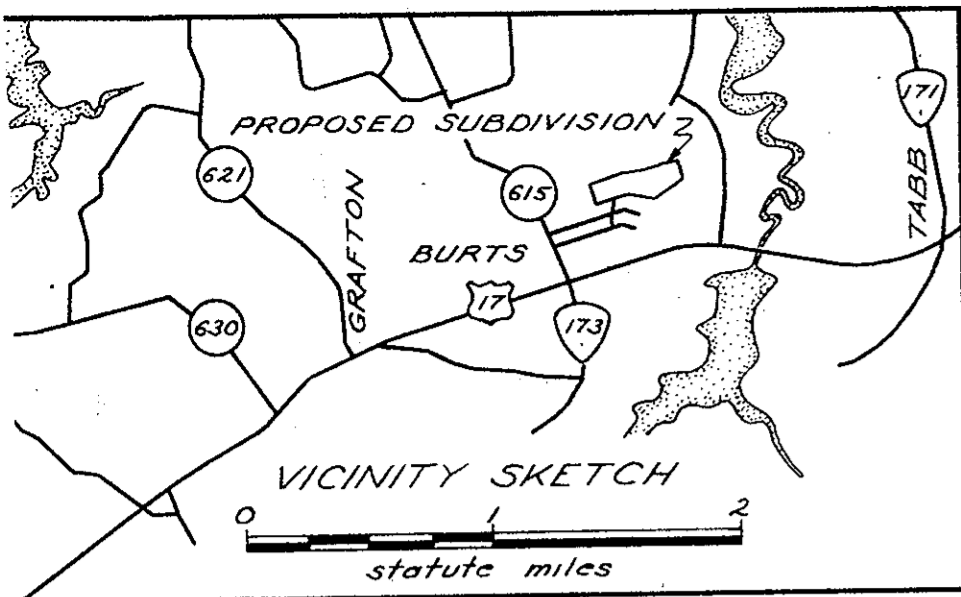
HARWOOD MILL - SECTION "C"

A SUBDIVISION OF THE PROPERTY OF
THE YORK DEVELOPMENT CORPORATION
GRAFTON DISTRICT
YORK COUNTY
VIRGINIA

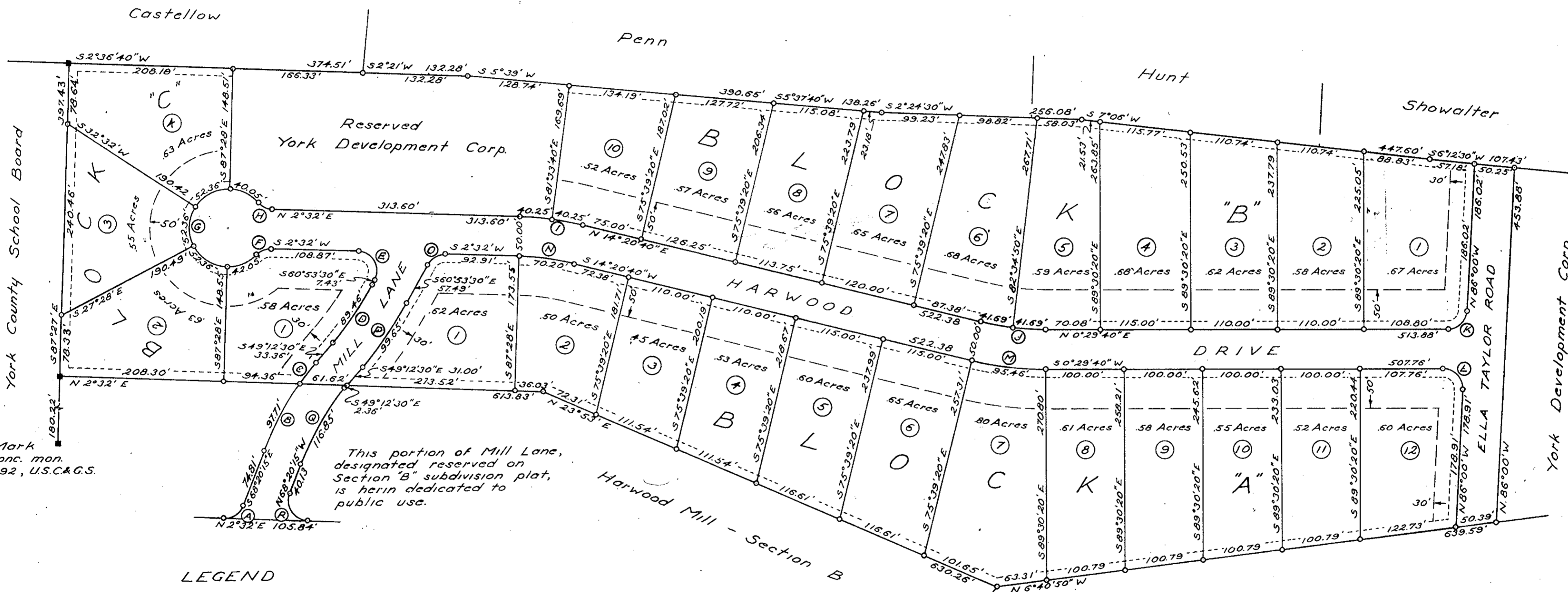
scale: 1" = 100'

date: Feb. 1, 1960

Wetherill D. Thomas
Certified Land Surveyor
Newport News, Virginia



All bearings refer to magnetic north of 1953



Bench Mark
top of conc. mon.
elev. +0.92, U.S.C.&G.S.

This portion of Mill Lane,
designated reserved on
Section "B" subdivision plat,
is herein dedicated to
public use.

LEGEND

- o iron pipe
- concrete monument
- - - 10' utilities easement
- - - building set-back

This subdivision of a part of that property formerly known as the Poorhouse Farm Tract acquired from The County of York by deed recorded in deed Book 100, page 351 is made with the full consent and approval of its owners, The York Development Corporation.

John P. Williams
President
Ronald D. Baals
Secretary

To the best of my knowledge and belief this survey and plat meet all the requirements of the York County Subdivision Ordinance.

Wetherill D. Thomas
Certified Land Surveyor

York Development Corp.
200' easement granted to V.E.P. Co.

Filed in the Clerk's Office the 9th day of December 1960

Testes:
MELVILLE I. BRYANT, Clerk
Melville I. Bryant D.C.

CURVE	DELTA	RADIUS	TANGENT	LENGTH
A	70°52'15"	25.00	17.79	30.92
B	13°59'45"	400.00	49.10	97.71
C	5°08'00"	400.00	17.93	35.84
D	11°41'00"	438.71	44.89	89.46
E	116°34'30"	25.00	10.46	50.86
F	48°11'30"	25.00	11.18	21.30
G	263°37'30"	50.00	—	230.07
H	48°11'30"	25.00	11.18	21.30
I	11°48'40"	390.56	40.40	80.51
J	13°51'00"	344.92	41.89	83.38
K	86°29'40"	25.00	23.52	37.74
L	93°30'20"	25.00	26.58	40.80
M	13°51'00"	394.92	47.96	95.46
N	11°48'40"	340.56	35.23	70.20
O	63°25'30"	25.00	15.45	27.67
P	11°41'00"	488.71	50.00	99.65
Q	19°07'45"	350.00	58.98	116.85
R	109°07'45"	25.00	35.13	47.61

APPROVED
YORK COUNTY BOARD OF SUPERVISORS
BY *William A. Schaffner*
PLAT APPROVING AGENT.
DATE *December 9, 1960*
VARIATIONS APPROVED
DATE