

# WOODHAVEN

Plat Book No. 6 Page 179

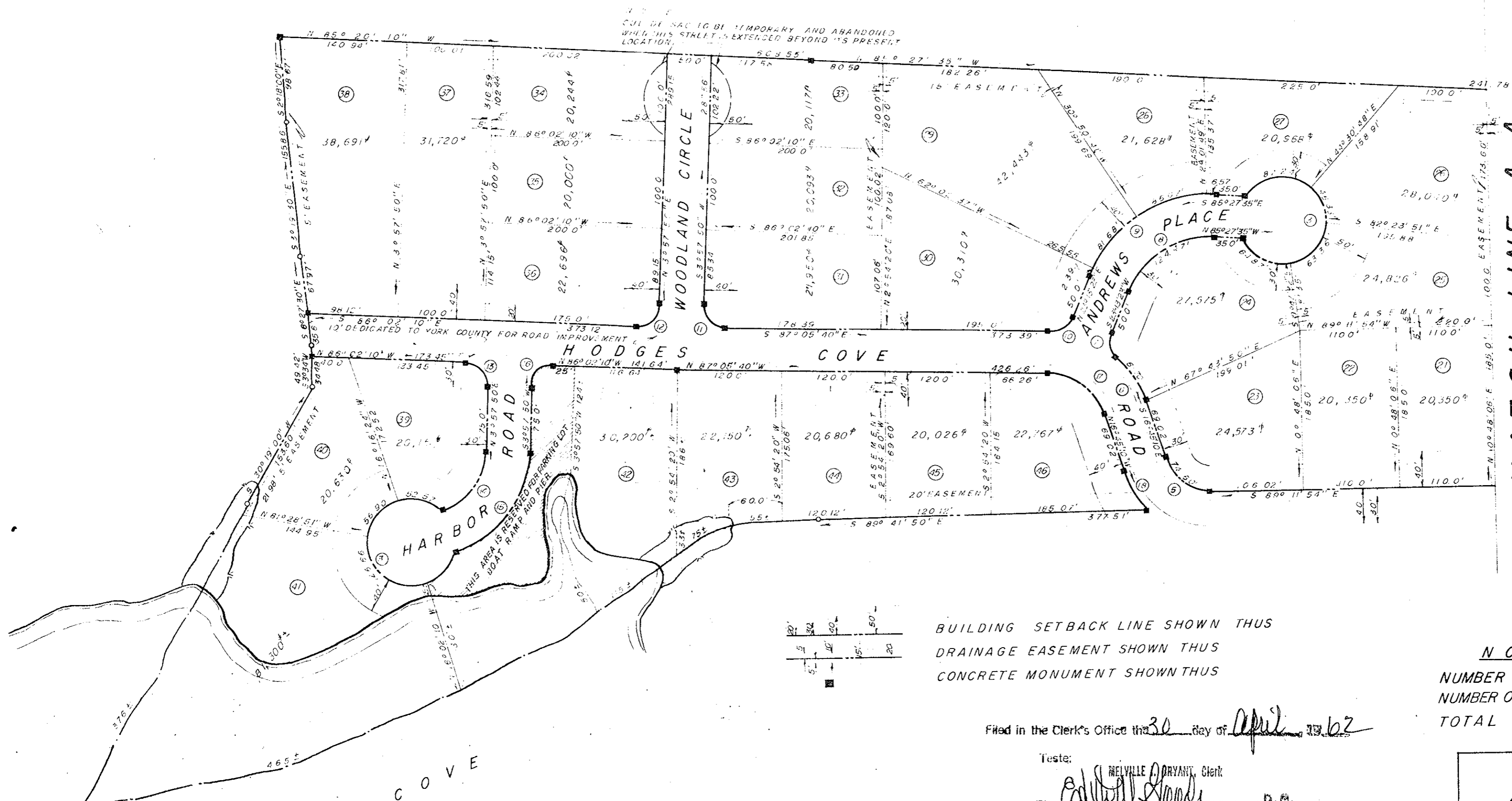
## GRAFTON DISTRICT YORK COUNTY, VIRGINIA.

R. F. PYLE CERT. LAND SURVEYOR

NEWPORT NEWS, VIRGINIA.

SCALE 1" = 100'

APRIL 16, 1962



MATCH LINE A-A

See "Vacation of Plat Instrument" dated Sept. 7, 1960, recorded Sept. 28, 1962, in Deed Book 160, Page 745

BUILDING SETBACK LINE SHOWN THUS  
DRAINAGE EASEMENT SHOWN THUS  
CONCRETE MONUMENT SHOWN THUS

Filed in the Clerk's Office this 30 day of April, 1962

Teste: NEVILLE DRYANT, Clerk  
Edith D. Dandy D.C.

**NOTES**  
NUMBER OF ACRES IN TRACT 32.19  
NUMBER OF ACRES TO BE SUBDIVIDED 32.19  
TOTAL MILES OF ROAD 0.82

APPROVED FOR THE  
**COUNTY OF YORK**

BY William D. Schaffner  
DATE April 18, 1962

CURVE DATA TABLE													
NO.	RADIUS	DELTA	TANGENT	ARC	CHORD	CHORD BEARING	NO.	RADIUS	DELTA	TANGENT	ARC	CHORD	CHORD BEARING
1	25.00	81°01'21"	21.56	35.35	32.48	N 50° 17' 25" E	10	25.00	69°40'57"	17.40	30.40	28.57	N 58° 03' 51" E
2	25.00	90°00'00"	25.00	39.27	35.36	S 44° 11' 54" E	11	25.00	91°03'30"	25.47	39.30	35.68	S 41° 33' 55" E
3	50.00	300°00'00"		261.80			12	25.00	90°00'00"	25.00	39.27	35.36	N 48° 57' 50" E
4	25.00	90°00'00"	25.00	39.27	35.36	N 45° 48' 06" E	13	25.00	90°00'00"	25.00	39.27	35.36	N 41° 22' 10" W
5	59.00	72°26'44"	43.22	74.60	69.73	S 52° 58' 32" E	14	75.00	70°00'00"	52.52	91.63	86.04	N 38° 57' 50" E
6	119.00	29°42'24"	31.35	61.70	61.01	S 31° 36' 22" E	15	125.00	70°00'00"	87.53	152.72	143.39	S 38° 57' 50" W
7	25.00	69°40'57"	17.40	30.40	28.57	S 11° 37' 05" E	16	25.00	90°00'00"	25.00	39.27	35.36	S 48° 57' 50" W
8	100.00	71°19'02"	71.75	124.47	116.60	S 58° 52' 54" W	17	69.00	70°20'30"	48.62	84.71	79.49	N 51° 55' 25" W
9	150.00	71°19'02"	107.62	186.71	174.89	N 58° 52' 54" E	18	109.00	28°50'43"	60.04	54.87	105.17	N 31° 10' 31" W