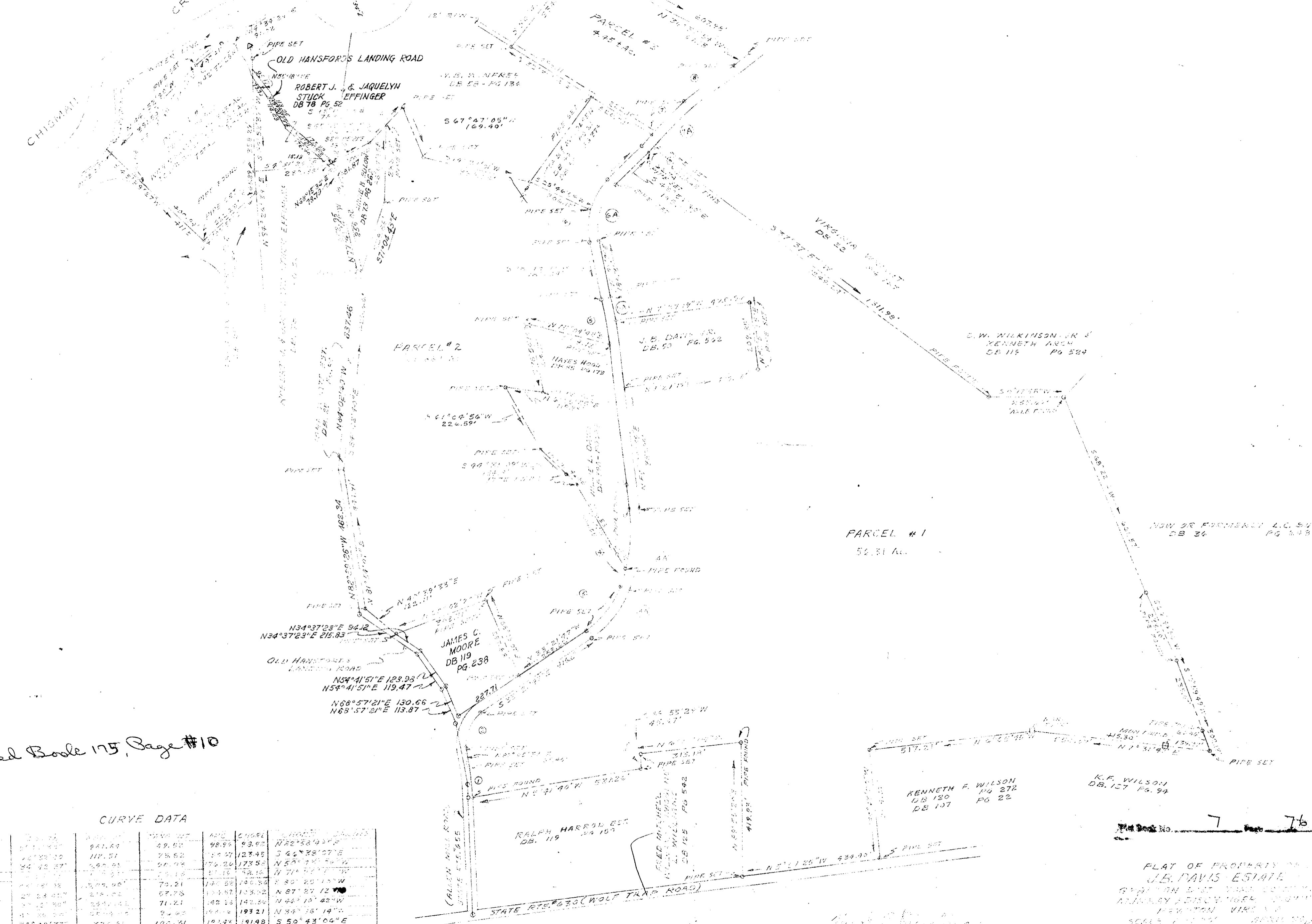


MAGNETIC DEVIATION JULY 1985



Deed Book 175, Page #10

CURVE DATA

STATION	CHORD BEARING	CHORD DIST.	ARC BEARING	ARC DIST.	CHORD BEARING	CHORD DIST.	ARC BEARING	ARC DIST.
1	N88°15'34"E	941.63	59.00	98.92	N82°32'43"E	123.45	54°39'07"E	173.52
2	N43°26'E	119.51	76.62	100.52	N50°10'42"W	142.36	N34°18'14"W	193.21
3	N59°15'30"E	249.81	160.98	204.24	N87°27'12"	103.02	S50°43'04"E	191.98
4	N71°14'14"E	272.31	175.18	224.12	N87°27'12"	103.02	S50°43'04"E	191.98
5	N82°32'43"E	349.48	224.12	282.82	S50°43'04"E	191.98	S87°57'56"E	255.75
6	N87°27'12"	421.12	272.31	349.48	S87°57'56"E	255.75	N79°27'08"E	312.14
7	N87°27'12"	492.81	312.14	421.12	N79°27'08"E	312.14	S72°28'59"E	372.14
8	N87°27'12"	564.50	349.48	492.81	S72°28'59"E	372.14	S72°28'59"E	432.14
9	N87°27'12"	636.19	386.65	564.50	S72°28'59"E	432.14	S72°28'59"E	492.14
10	N87°27'12"	707.88	423.82	636.19	S72°28'59"E	492.14	S72°28'59"E	552.14
11	N87°27'12"	779.57	460.99	707.88	S72°28'59"E	552.14	S72°28'59"E	612.14
12	N87°27'12"	851.26	498.16	779.57	S72°28'59"E	612.14	S72°28'59"E	672.14
13	N87°27'12"	922.95	535.33	851.26	S72°28'59"E	672.14	S72°28'59"E	732.14
14	N87°27'12"	994.64	572.50	922.95	S72°28'59"E	732.14	S72°28'59"E	792.14
15	N87°27'12"	1066.33	609.67	994.64	S72°28'59"E	792.14	S72°28'59"E	852.14
16	N87°27'12"	1138.02	646.84	1066.33	S72°28'59"E	852.14	S72°28'59"E	912.14
17	N87°27'12"	1209.71	684.01	1138.02	S72°28'59"E	912.14	S72°28'59"E	972.14
18	N87°27'12"	1281.40	721.18	1209.71	S72°28'59"E	972.14	S72°28'59"E	1032.14
19	N87°27'12"	1353.09	758.35	1281.40	S72°28'59"E	1032.14	S72°28'59"E	1092.14
20	N87°27'12"	1424.78	795.52	1353.09	S72°28'59"E	1092.14	S72°28'59"E	1152.14
21	N87°27'12"	1496.47	832.69	1424.78	S72°28'59"E	1152.14	S72°28'59"E	1212.14
22	N87°27'12"	1568.16	869.86	1496.47	S72°28'59"E	1212.14	S72°28'59"E	1272.14
23	N87°27'12"	1639.85	907.03	1568.16	S72°28'59"E	1272.14	S72°28'59"E	1332.14
24	N87°27'12"	1711.54	944.20	1639.85	S72°28'59"E	1332.14	S72°28'59"E	1392.14
25	N87°27'12"	1783.23	981.37	1711.54	S72°28'59"E	1392.14	S72°28'59"E	1452.14
26	N87°27'12"	1854.92	1018.54	1783.23	S72°28'59"E	1452.14	S72°28'59"E	1512.14
27	N87°27'12"	1926.61	1055.71	1854.92	S72°28'59"E	1512.14	S72°28'59"E	1572.14
28	N87°27'12"	1998.30	1092.88	1926.61	S72°28'59"E	1572.14	S72°28'59"E	1632.14
29	N87°27'12"	2069.99	1130.05	1998.30	S72°28'59"E	1632.14	S72°28'59"E	1692.14
30	N87°27'12"	2141.68	1167.22	2069.99	S72°28'59"E	1692.14	S72°28'59"E	1752.14
31	N87°27'12"	2213.37	1204.39	2141.68	S72°28'59"E	1752.14	S72°28'59"E	1812.14
32	N87°27'12"	2285.06	1241.56	2213.37	S72°28'59"E	1812.14	S72°28'59"E	1872.14
33	N87°27'12"	2356.75	1278.73	2285.06	S72°28'59"E	1872.14	S72°28'59"E	1932.14
34	N87°27'12"	2428.44	1315.90	2356.75	S72°28'59"E	1932.14	S72°28'59"E	1992.14
35	N87°27'12"	2500.13	1353.07	2428.44	S72°28'59"E	1992.14	S72°28'59"E	2052.14
36	N87°27'12"	2571.82	1390.24	2500.13	S72°28'59"E	2052.14	S72°28'59"E	2112.14
37	N87°27'12"	2643.51	1427.41	2571.82	S72°28'59"E	2112.14	S72°28'59"E	2172.14
38	N87°27'12"	2715.20	1464.58	2643.51	S72°28'59"E	2172.14	S72°28'59"E	2232.14
39	N87°27'12"	2786.89	1501.75	2715.20	S72°28'59"E	2232.14	S72°28'59"E	2292.14
40	N87°27'12"	2858.58	1538.92	2786.89	S72°28'59"E	2292.14	S72°28'59"E	2352.14
41	N87°27'12"	2930.27	1576.09	2858.58	S72°28'59"E	2352.14	S72°28'59"E	2412.14
42	N87°27'12"	3001.96	1613.26	2930.27	S72°28'59"E	2412.14	S72°28'59"E	2472.14
43	N87°27'12"	3073.65	1650.43	3001.96	S72°28'59"E	2472.14	S72°28'59"E	2532.14
44	N87°27'12"	3145.34	1687.60	3073.65	S72°28'59"E	2532.14	S72°28'59"E	2592.14
45	N87°27'12"	3217.03	1724.77	3145.34	S72°28'59"E	2592.14	S72°28'59"E	2652.14
46	N87°27'12"	3288.72	1761.94	3217.03	S72°28'59"E	2652.14	S72°28'59"E	2712.14
47	N87°27'12"	3360.41	1799.11	3288.72	S72°28'59"E	2712.14	S72°28'59"E	2772.14
48	N87°27'12"	3432.10	1836.28	3360.41	S72°28'59"E	2772.14	S72°28'59"E	2832.14
49	N87°27'12"	3503.79	1873.45	3432.10	S72°28'59"E	2832.14	S72°28'59"E	2892.14
50	N87°27'12"	3575.48	1910.62	3503.79	S72°28'59"E	2892.14	S72°28'59"E	2952.14

Plat Book No. 7 Page 76

PLAT OF PROPERTY OF
J.B. DAVIS ESTATE
GIVEN ON LAST DAY OF OCTOBER
ADJUDICATED DISCHARGED AND
RECORDED IN VOLUME
SCALE 1" = 40'
REVISED FEB. 83