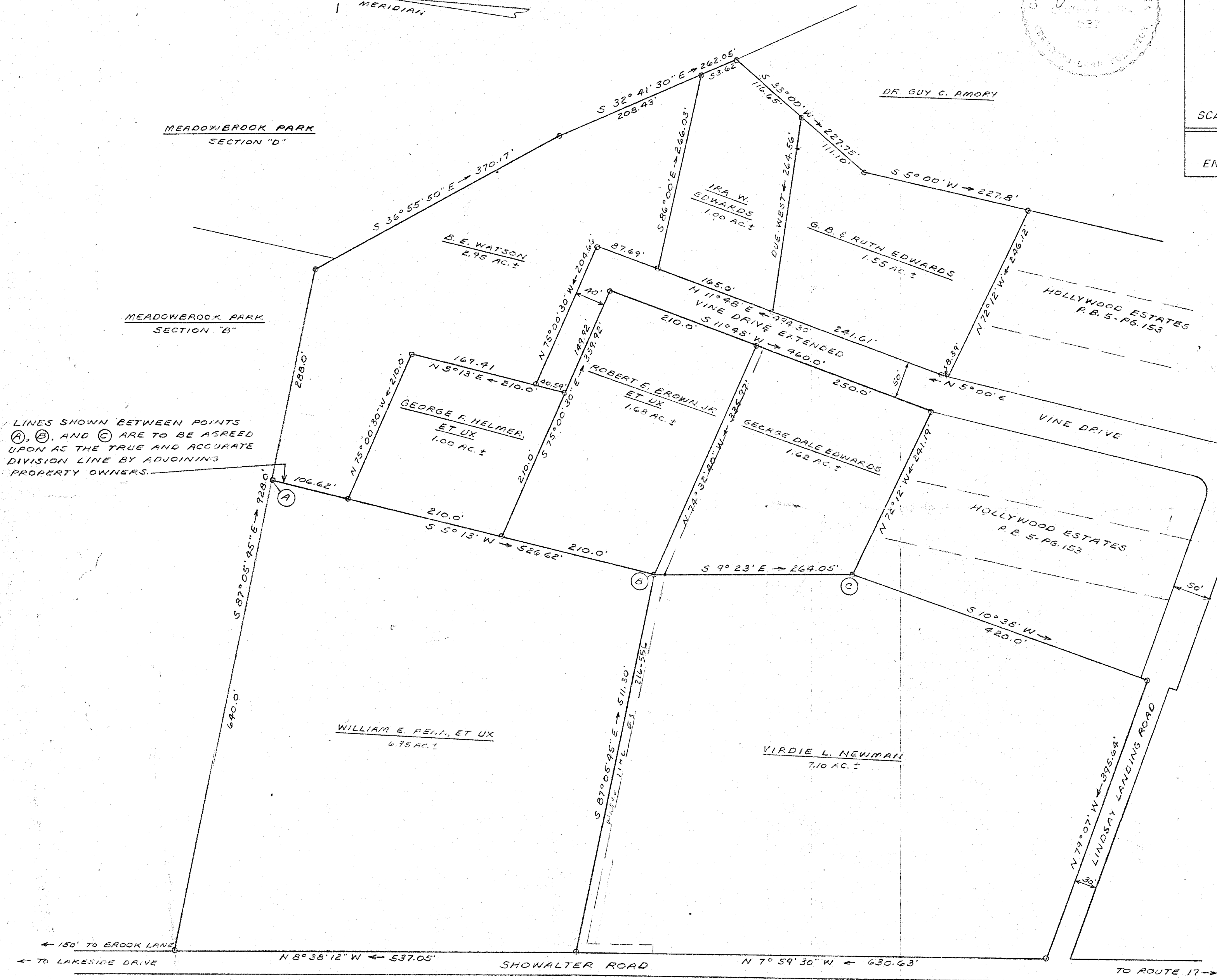
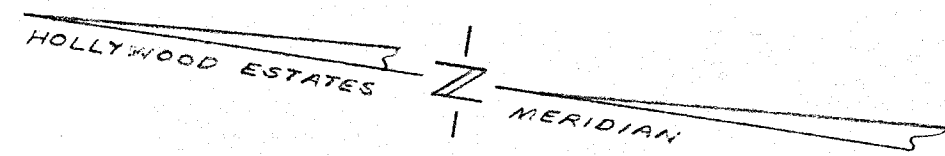
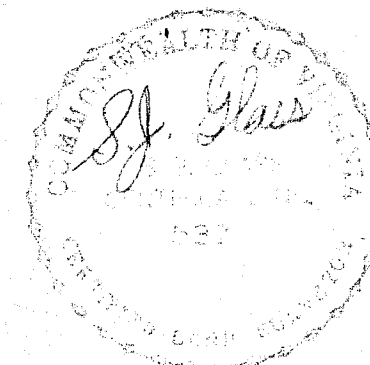


PLAT
SHOWING PROPERTY OF
B. E. WATSON, ET ALS

LOCATED ON
SHOWALTER ROAD, LINDSAY LANDING ROAD
AND VINE DRIVE EXTENDED
GRAFTON DISTRICT, YORK COUNTY, VIRGINIA

SCALE: 1"=100' NOVEMBER 30, 1962

S. J. GLASS & ASSOCIATES
ENGINEERING SERVICES — HAMPTON, VIRGINIA



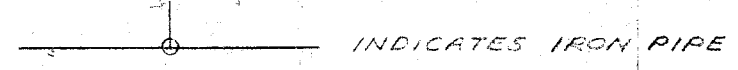
LINES SHOWN BETWEEN POINTS
A, B, AND C ARE TO BE AGREED
UPON AS THE TRUE AND ACCURATE
DIVISION LINE BY ADJOINING
PROPERTY OWNERS.

NOTES:
THIS IS A PLAT OF SURVEY OF PROPERTIES
OF B. E. WATSON, WIDOWER, WILLIAM E.
PENN, ET UX, VIRDIE L. NEWMAN, AND
PARCELS ALONG VINE DRIVE, EXTENDED
CONVEYED BY B. E. WATSON. THIS PLAT
IS INTENDED TO SHOW NEW PROPERTY
LINE BETWEEN B. E. WATSON AND WILLIAM
E. PENN TO SETTLE A DISPUTE WHICH HAS
EXISTED SINCE 1922; ALSO TO CORRECT
ERRORS IN DESCRIPTIONS OF RECENTLY
CONVEYED PROPERTIES BY B. E. WATSON.

DEED REFERENCES:
B. E. WATSON FROM J. I. WAINWRIGHT:
D. B. 34, PG. 84.
WILLIAM E. PENN, ET UX FROM ELIZABETH
DIETL PENN, ET ALS: D. B. 152, PG. 704.
VIRDIE L. NEWMAN FROM J. SUSKIND, ET UX
AND G. HILL, ET UX: D. B. 74, PG. 95.
G. B. & RUTH EDWARDS FROM B. E. WATSON:
D. B. 127, PG. 408 AND D. B. 129, PG. 519.
GEORGE DALE EDWARDS FROM B. E.
WATSON: D. B. 132, PG. 44.
ROBERT E. BROWN, JR., ET UX, FROM B. E.
WATSON: D. B. 144, PG. 137.
PAUL H. MULLIS, ET UX, FROM B. E.
WATSON: D. B. 148, PG. 418; CONVEYED
FROM MULLIS TO GEORGE F. HELMER,
ET UX, D. B. 154, PG. 632.
IRA W. EDWARDS FROM B. E. WATSON:
D. B. 159, PG. 275.

PLAT REFERENCES:
D. B. 48, PG. 458
P. B. 1, PG. 200

Deed Book 175, Page 502



DE E-28 PR-1