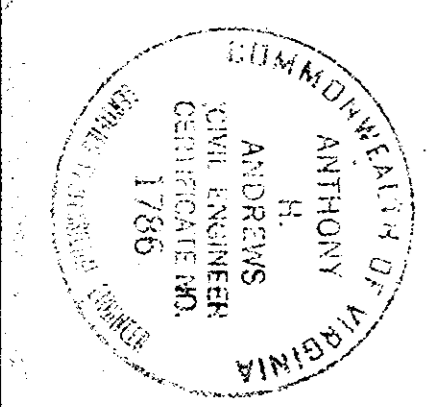
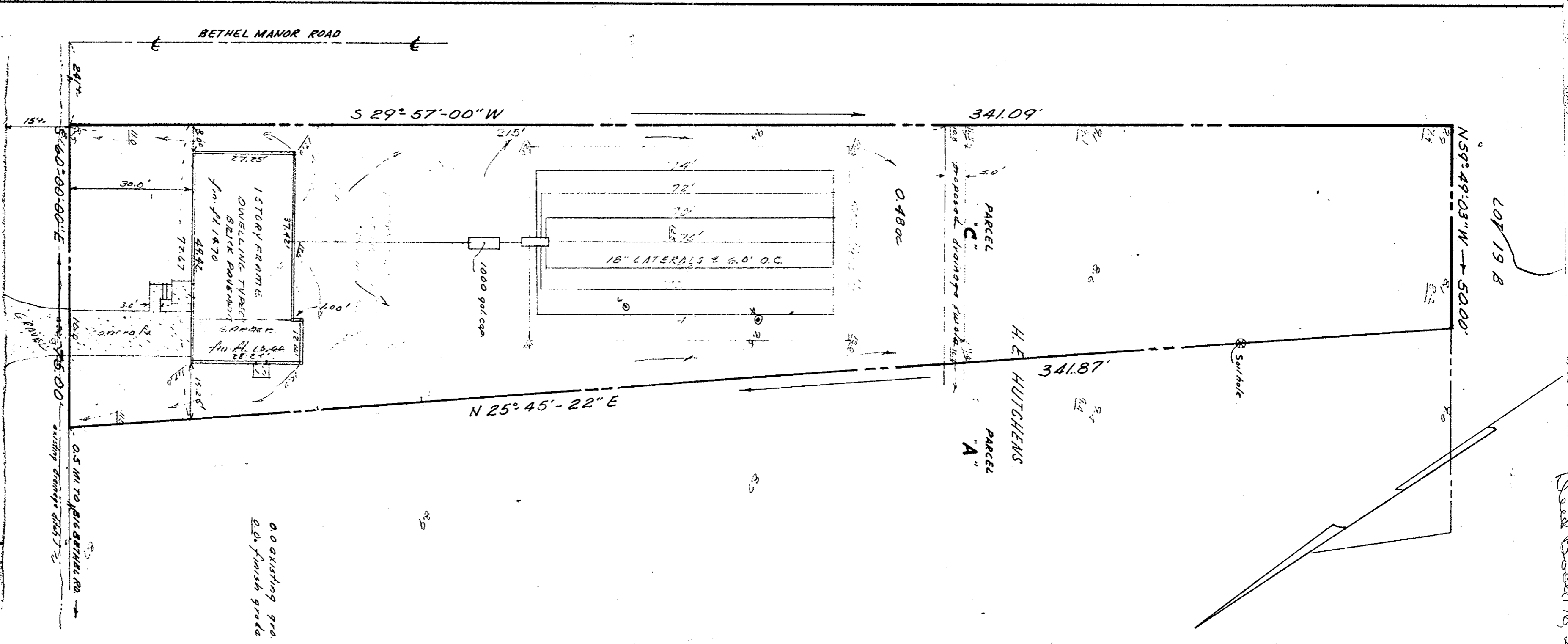
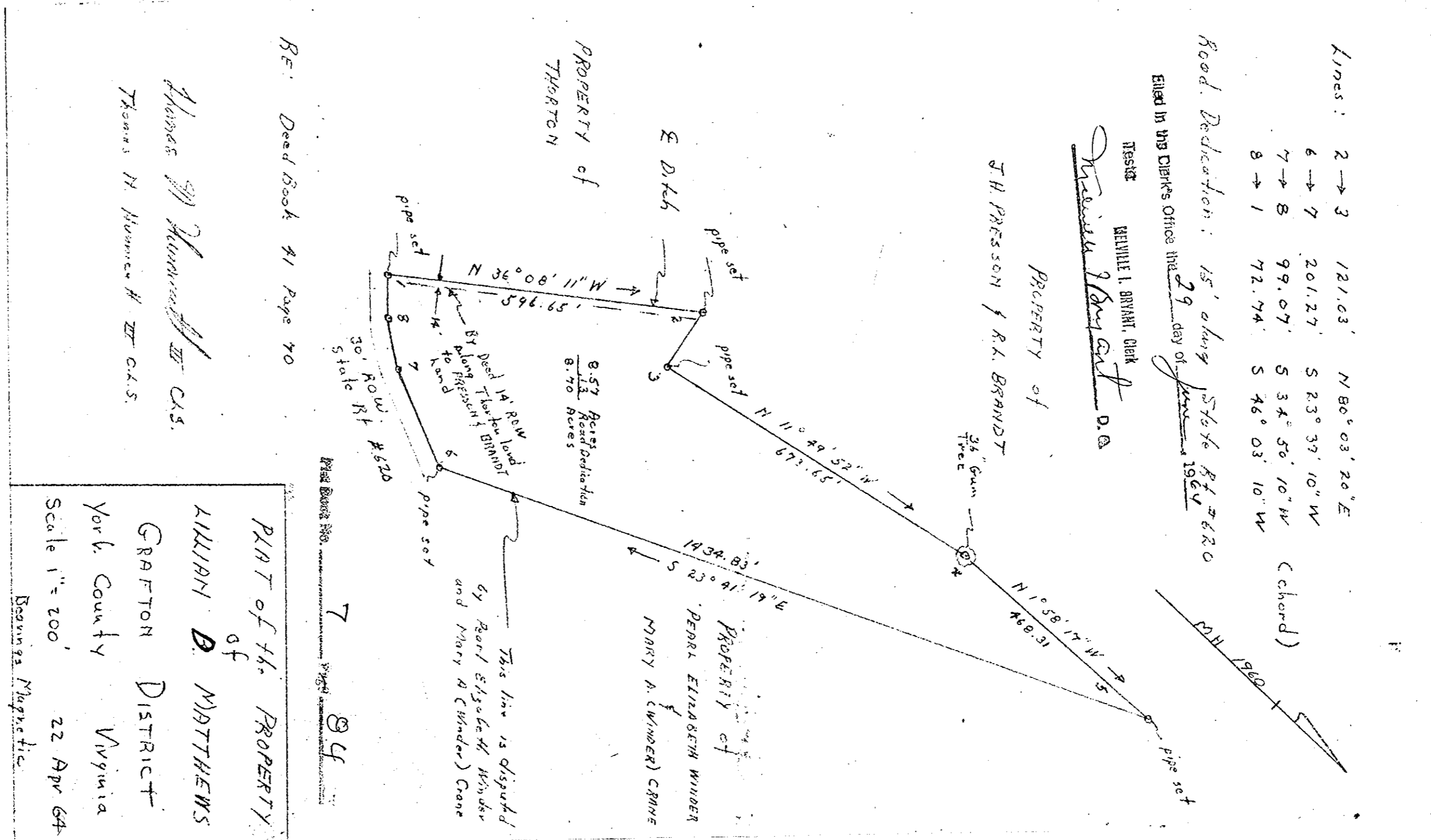


DATE: 4/28/63
 A.H. ANDREWS ENGINEER/ASSO.
 NEWPORT NEWS, VIRGINIA
 SCALE 1"=200.00'

REF: P.B. #1 PG. 279 Q.B. 146 PG. 532
 DIVISION OF PART OF LOT OF
 H.E. HUTCHINS
 SHADY BANKS FARM
 BETHEL MANOR DISTRICT YORK COUNTY VIRGINIA
 PLAT OF
 RT. #134 500.0' W
 ASPHALT SURFACE
 assumed adding
 15.4'



Plan Book No. 7 Page 84



PART OF THE PROPERTY
 of
 WILLIAM D. MATTHEWS
 GRAFTON DISTRICT
 York County Virginia
 Scale 1"=200'
 22 Apr 64
 Bearings Magnetic