

SUBDIVISION PLAT HARWOOD HEIGHTS

(LOTZ REALTY COMPANY, OWNERS AND DEVELOPERS)

LOCATED ON SHOWALTER ROAD
GRAFTON DISTRICT
YORK COUNTY, VIRGINIA

SCALE: 1" = 100'

DECEMBER 1, 1964

S. J. GLASS AND ASSOCIATES
ENGINEERING SERVICES -- HAMPTON, VIRGINIA

AREA IN SUBDIVISION LOTS	25.43	ACRES ±
AREA DEDICATED FOR ROADS	5.59	ACRES ±
TOTAL AREA IN SUBDIVISION	31.02	ACRES ±

- INDICATES CONCRETE MONUMENT
- INDICATES IRON PIPE
- f10'— INDICATES EASEMENTS DEDICATED TO YORK COUNTY, VIRGINIA FOR DRAINAGE AND PUBLIC UTILITIES.

TO THE BEST OF MY KNOWLEDGE AND BELIEF THIS SURVEY AND PLAT ARE CORRECT AND ALL REQUIREMENTS OF YORK COUNTY, VIRGINIA RELATING TO THE RECORDATION OF PLATS OF SUBDIVISIONS HAVE BEEN COMPLIED WITH. BOUNDARY CLOSURE ACCURACY IS GREATER THAN 1" IN 5000'.

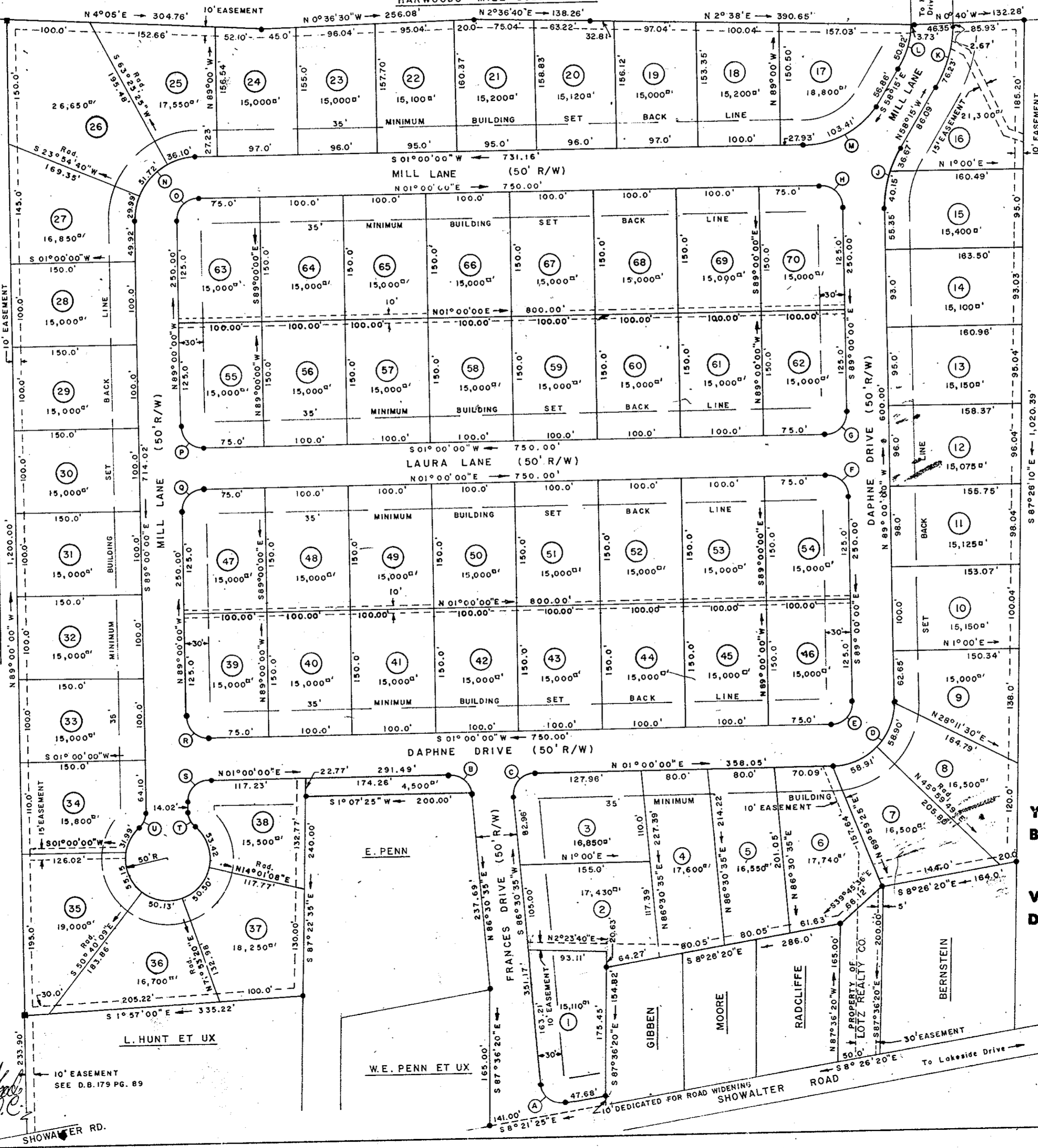
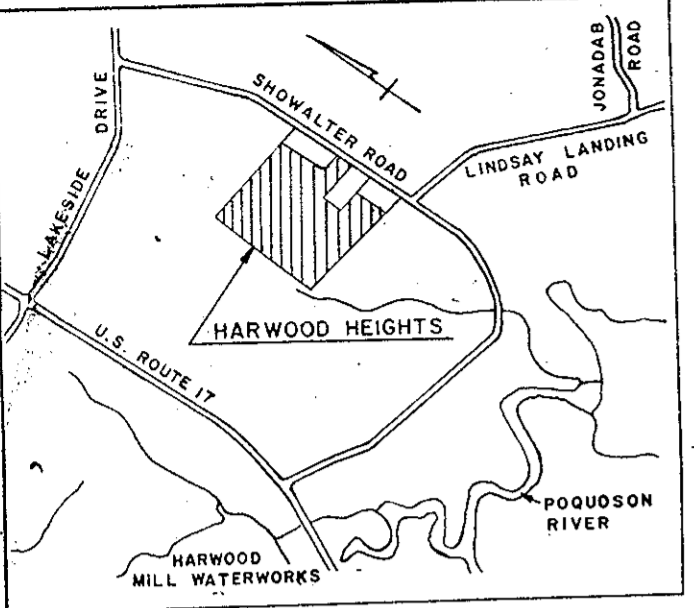
HAMPTON, VIRGINIA *S. Johnston Glass*
CIVIL ENGINEER AND SURVEYOR

DATE: Dec. 1, 1964

APPROVED
YORK COUNTY BOARD OF SUPERVISORS
BY *William R. Glass*
PLAT APPROVING AGENT.
DATE 9-7-65
VARIATIONS APPROVED
DATE _____

NO.	DELTA	RADIUS	TANGENT	ARC	CHORD	CHD. BEARING
A	94°52'00"	25.00'	27.22'	41.39'	36.82'	S39°04'35"W
B	85°30'35"	25.17'	23.27'	37.56'	34.17'	S43°45'17"W
C	94°29'25"	25.00'	27.04'	41.23'	36.71'	N46°14'43"W
D	90°00'00"	75.00'	75.00'	106.07'	106.07'	N44°00'00"W
E	90°00'00"	25.00'	25.00'	39.27'	35.36'	N44°00'00"W
F	90°00'00"	25.00'	25.00'	39.27'	35.36'	S46°00'00"W
G	90°00'00"	25.00'	25.00'	39.27'	35.36'	N44°00'00"W
H	90°00'00"	25.00'	25.00'	39.27'	35.36'	S46°00'00"W
J	30°45'00"	143.14'	39.36'	76.82'	75.90'	N73°37'30"W
K	29°07'00"	150.00'	38.96'	76.23'	75.41'	N72°48'30"W
L	29°07'00"	100.00'	25.97'	50.82'	50.27'	N72°48'30"W

NO.	DELTA	RADIUS	TANGENT	ARC	CHORD	CHD. BEARING
M	59°15'00"	100.00'	56.87'	103.41'	98.86'	N28°37'30"W
N	90°00'00"	75.00'	75.00'	117.81'	106.07'	N44°00'00"W
O	90°00'00"	25.00'	25.00'	39.27'	35.36'	N44°00'00"W
P	90°00'00"	25.00'	25.00'	39.27'	35.36'	S46°00'00"W
Q	90°00'00"	25.00'	25.00'	39.27'	35.36'	N44°00'00"W
R	90°00'00"	25.00'	25.00'	39.27'	35.36'	S46°00'00"W
S	90°00'00"	25.00'	25.00'	39.27'	35.36'	N44°00'00"W
T	48°11'23"	25.00'	11.18'	21.03'	20.41'	S64°54'19"E
U	48°11'23"	25.00'	11.18'	21.03'	20.41'	S66°54'19"E



TITLE TO THE LAND BEING SUBDIVIDED AS SHOWN IS VESTED IN LOTZ REALTY CO., INC., BY DEEDS FROM: ELIZABETH DIETL PENN., DATED SEPTEMBER 2, 1964, RECORDED IN DEED BOOK 179, PAGE 89; LESTER L. AND HULDA HUNT DATED SEPTEMBER 1, 1964, RECORDED IN DEED BOOK 179, PAGE 99; WILLIAM E. AND HAWSIE BROWN PENN., DATED SEPTEMBER 2, 1964, RECORDED IN DEED BOOK 179, PAGE 74. THE ABOVE RECORDATIONS ARE IN THE CLERK'S OFFICE OF THE CIRCUIT COURT OF YORK COUNTY, VIRGINIA.

THIS PLAT OF SUBDIVISION IS WITH FREE CONSENT AND IN ACCORDANCE WITH THE DESIRES AND WISHES OF THE UNDERSIGNED OWNERS AND PROPRIETORS.

LOTZ REALTY COMPANY, INC.
BY: *Paul K. Lotz*
PAUL K. LOTZ, PRESIDENT
ATTEST: *Mary B. Lotz*
MARY B. LOTZ, SECRETARY

STATE OF VIRGINIA
CITY OF NEWPORT NEWS, TO WIT:
I, *Stephen S. Watson*, A NOTARY PUBLIC, DO HEREBY CERTIFY THAT PAUL K. LOTZ AND MARY B. LOTZ, WHOSE NAMES ARE SIGNED TO THE FOREGOING WRITING, HAVE ACKNOWLEDGED THE SAME BEFORE ME IN MY CITY AND STATE AFORESAID. GIVEN UNDER MY HAND THIS 15 DAY OF January, 1965.

Stephen S. Watson
NOTARY PUBLIC
MY COMMISSION EXPIRES 5/30 1965.

STATE OF VIRGINIA
COUNTY OF YORK, TO WIT:
IN THE CLERK'S OFFICE OF THE CIRCUIT COURT OF YORK COUNTY THE 7th DAY OF Dec, 1965, THIS PLAT WAS PRESENTED AND ADMITTED TO RECORD AS THE LAW DIRECTS.

TESTE: *William R. Glass*
CLERK
PLAT BOOK 7 PAGE 155