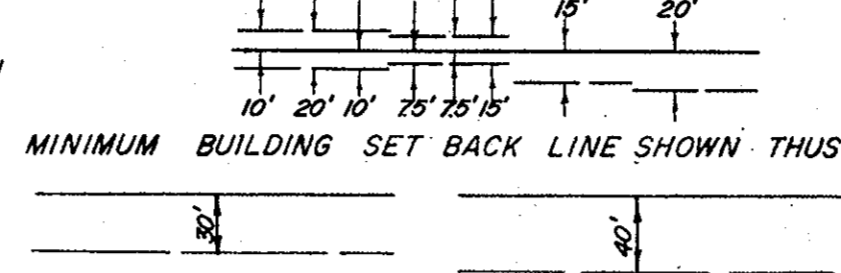


STATE OF VIRGINIA  
COUNTY OF YORK

IN THE CLERK'S OFFICE OF THE CIRCUIT COURT  
FOR THE COUNTY OF YORK THE 8 DAY OF June 1977,  
THIS MAP WAS PRESENTED AND ADMITTED TO RECORD  
AS THE LAW DIRECTS, PLAT BOOK 4, PAGE 158

*Edith M. Elliott, Clerk*  
TESTE: *Nancy B. Kane, D.C.*  
CLERK

EASEMENTS SHOWN THUS ARE HEREBY CONVEYED TO THE  
COUNTY OF YORK FOR DRAINAGE & OTHER UTILITIES.

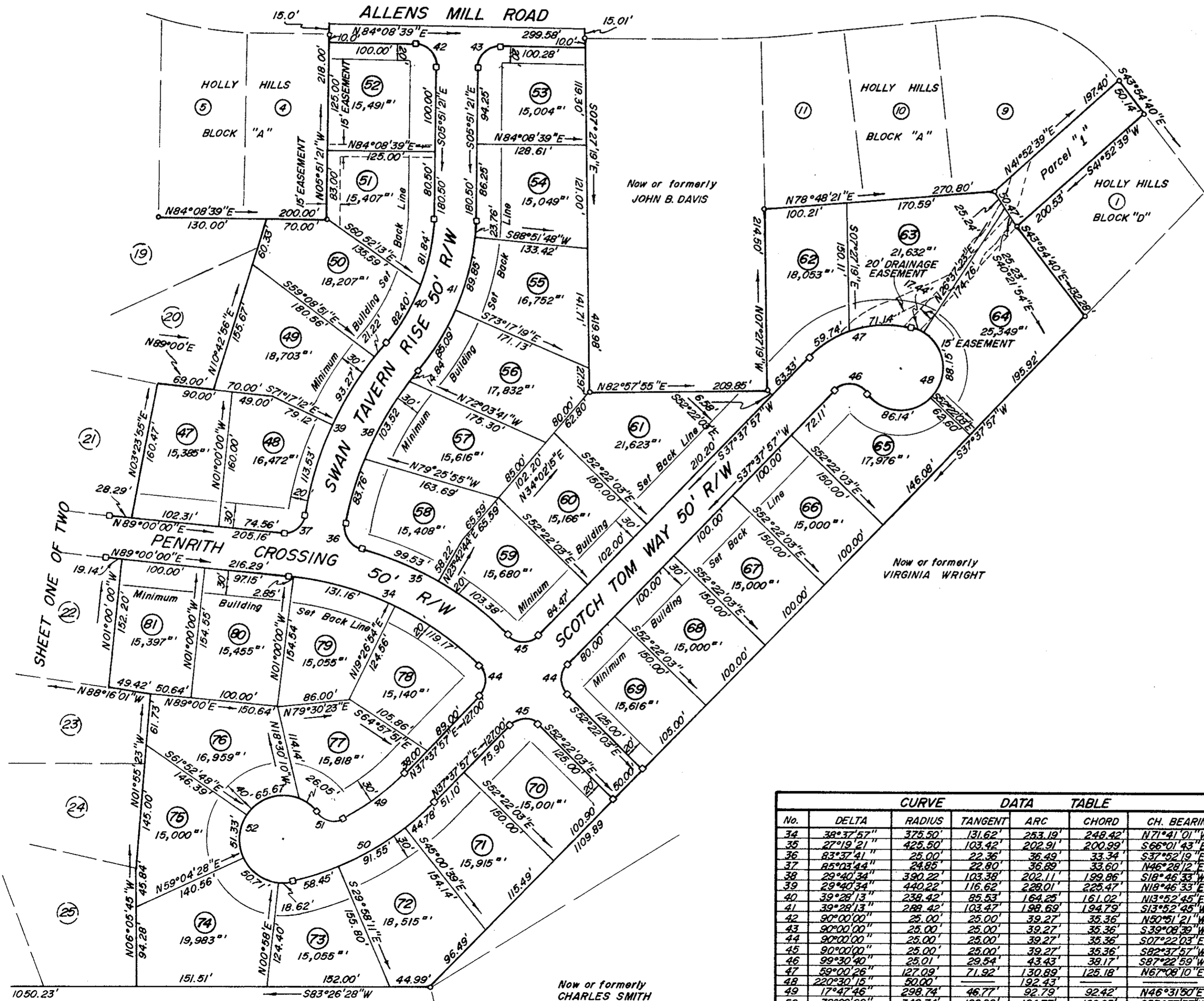


# SCOTCH TOM'S WOOD

COUNTY OF YORK  
VIRGINIA

COENEN & ASSOCIATES, INC.  
ENGINEERS - PLANNERS - SURVEYORS  
696 J. CLYDE MORRIS BLVD - NEWPORT NEWS, VA  
SCALE 1" = 100' DATE: APRIL 18, 1977

PARCELS 1 0.2284 ACRES  
AREA WITHIN LOTS, 32.3191 ACRES  
AREA WITHIN R/W 6.4998 ACRES  
TOTAL SUBDIVIDED AREA 39.0473 ACRES



CURVE DATA TABLE						
No.	DELTA	RADIUS	TANGENT	ARC	CHORD	CH. BEARING
34	38°37'57"	375.50'	131.62'	253.19'	248.42'	N71°41'01"W
35	27°19'21"	425.50'	103.42'	202.91'	200.99'	S66°01'43"E
36	83°37'41"	25.00'	22.36'	36.49'	33.34'	S37°52'18"W
37	85°03'44"	24.85'	22.80'	36.89'	33.60'	N46°28'12"E
38	29°40'34"	390.22'	103.38'	202.11'	199.86'	S18°46'53"W
39	29°40'34"	440.22'	116.62'	228.01'	225.47'	N18°46'53"E
40	39°28'13"	238.42'	85.53'	164.25'	161.02'	N13°52'45"E
41	39°28'13"	288.42'	103.47'	198.69'	194.79'	S13°52'45"W
42	90°00'00"	25.00'	25.00'	39.27'	35.36'	N50°51'21"W
43	90°00'00"	25.00'	25.00'	39.27'	35.36'	S39°08'39"W
44	90°00'00"	25.00'	25.00'	39.27'	35.36'	S07°22'03"E
45	90°00'00"	25.00'	25.00'	39.27'	35.36'	S82°37'47"W
46	99°30'40"	25.01'	29.54'	43.43'	39.17'	S87°22'59"W
47	59°00'26"	127.09'	71.92'	130.69'	125.18'	N67°06'10"E
48	220°30'15"	50.00'	192.43'	192.43'	192.43'	
49	17°47'45"	298.74'	46.77'	92.79'	92.42'	N46°31'50"E
50	32°00'00"	348.74'	100.00'	194.77'	192.26'	S53°37'57"W
51	77°47'10"	25.00'	20.17'	33.94'	31.39'	S85°40'42"E
52	222°33'18"	50.00'	192.43'	192.43'	192.43'	