

**VICINITY MAP**  
SCALE IN MILES  
0 1/4 1/2 3/4 1

RECORD MERIDIAN - D.B. 39A, Pg. 180  
N

N/F  
EMAUEL, INC.  
D.B. 317, Pg. 689

N/F  
TWO J'S, INC.

N/F  
RICHARD C. WHITE

N/F  
HARRIS

N/F  
BOARD OF AMERICAN  
MISSIONS  
D.B. 228, Pg. 625

N/F  
JOHN C. MOORE  
ESTATE

N/F  
C.S. MOORE

N/F  
JOHN C. MOORE  
ESTATE

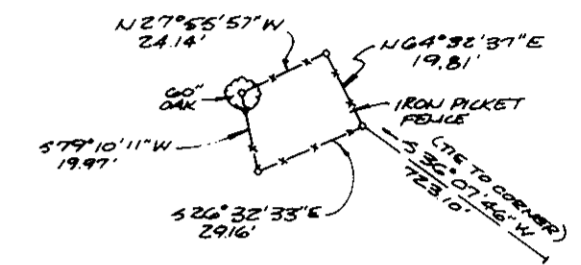
N/F  
GRAY  
D.B. 124/555

N/F  
AMERICAN OIL CO.  
P.B. 8, Pg. 434

N/F  
CARTER HARRISON  
D.B. 54, Pg. 250

N/F  
ORPAH COOPER

NOTE: LINES ARE AS DESCRIBED AND OCCUPIED BY MRS. F.W. GRAY



**CEMETERY DETAIL**  
1"=50'

**AREA = 103.81 ACRES ±**  
AREA TO BE ACQUIRED BY COUNTY OF YORK = 95.41 AC. ±  
(PART OF TOTAL 103.81 AC. ±)

**REFERENCES**

- 3 PLATS IN POSSESSION OF JOHN S. GRAY:**
1. A MAP OF A TRACT OF LAND COMMONLY KNOWN AS BELL'S ADJOINING, SURVEYED 19 JUNE, 1825, AND DIVIDED BETWEEN JAMES H. CHAPMAN AND MARY ELIZABETH GRAY, BY C. HUBBARD, SURVEYOR FOR ELIZABETH CITY COUNTY WITH FIELD NOTES ATTACHED.
  2. COPY OF NO. 1. ABOVE DATED OCTOBER 30, 1953, SIGNED BY "C. A. S."
  3. SURVEY OF LINE AGREEMENT ON WEST BOUNDARY BY JOSEPH M. HATCHETT, C.E., AND GIRARD CHAMBERS, C.E., DATED SEPTEMBER 28, 1929.
- ALSO  
W. B. 33, Pg. 81

Filed in the Clerk's Office, Circuit Court, York Co., Va.  
the 25<sup>th</sup> day of November 1979

Teste:  
Edith M. Elliott, Clerk  
*Catherine Boudan*

Plat Book No. 9 Page 398

0 50 100 200 400  
SCALE IN FEET

$\Delta = 19^{\circ}18'38''$   
 $R = 994.93'$   
 $L = 335.33'$   
 $T = 169.27'$   
 $C = 333.74'$   
 $CB = 550^{\circ}44'18''W$

**8.40 AC. ±**  
(PART OF TOTAL 103.81 AC. ±)

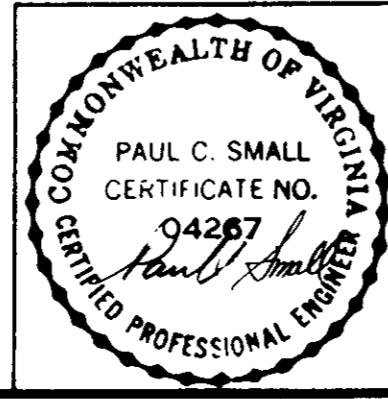
**TOTAL**  
 $\Delta = 14^{\circ}37'48''$   
 $R = 1392.39'$   
 $L = 355.54'$   
 $T = 178.74'$   
 $C = 354.57'$   
 $CB = 553^{\circ}04'43''W$

$\Delta = 07^{\circ}25'44''$   
 $R = 1392.39'$   
 $L = 180.53'$   
 $T = 90.39'$   
 $C = 180.41'$   
 $CB = 556^{\circ}40'50''W$

$\Delta = 07^{\circ}12'04''$   
 $R = 1392.39'$   
 $L = 175.00'$   
 $T = 87.62'$   
 $C = 174.89'$   
 $CB = 549^{\circ}21'57''W$

VDHT PROJECT NO. 0173-099-005 R/W (RT 173)  
REVISED 8/25/58

VDHT PROJECT # 1399.03,  
SHEET 3 (RT. 622)  
REVISED 5/18/54



| No. | DATE    | REVISION/COMMENT/NOTE      | BY     |
|-----|---------|----------------------------|--------|
| 2   | 8/13/80 | REVISED FOR PARTIAL TAKING | E.E.Z. |
| 1   | 4/17/80 | ADDED CEMETERY             | P.C.S. |
|     |         |                            |        |



**SURVEY OF 103.81 ACRES**  
OF THE PROPERTY OF  
**MRS. FRANKIE WOODY GRAY, ET ALS**  
NELSON DISTRICT, YORK COUNTY, VIRGINIA

**Small Engineering, Inc.**  
Engineers, Planners, Surveyors  
625 Ironbound Road 804 253-0040  
WILLIAMSBURG, VA 23185

Scale: 1" = 200'  
Date: NOVEMBER, 1979  
Job: Y07