

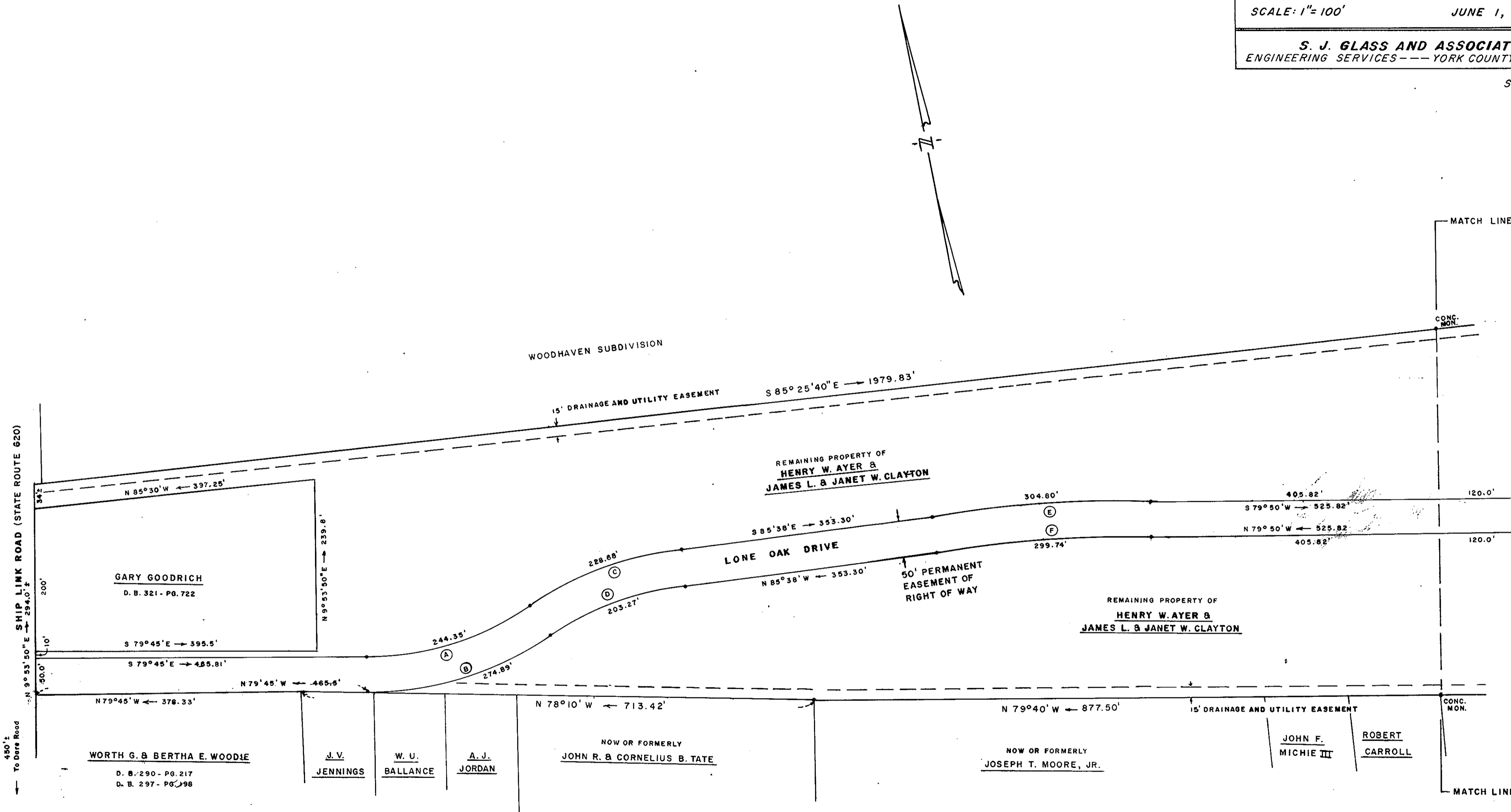
FAMILY SUBDIVISION PLAT
LONE OAK ESTATES
 SECTION 1
 COUNTY OF YORK, VIRGINIA

SCALE: 1" = 100'

JUNE 1, 1981

S. J. GLASS AND ASSOCIATES
 ENGINEERING SERVICES --- YORK COUNTY, VIRGINIA

SHEET 2 OF 2



Plat Book No. 9 Page 445

Filed in the Clerk's Office, Circuit Court, York Co., Va.
 the 24th day of September 1981.

Teste:
 Edith M. Elliott, Clerk
[Signature]