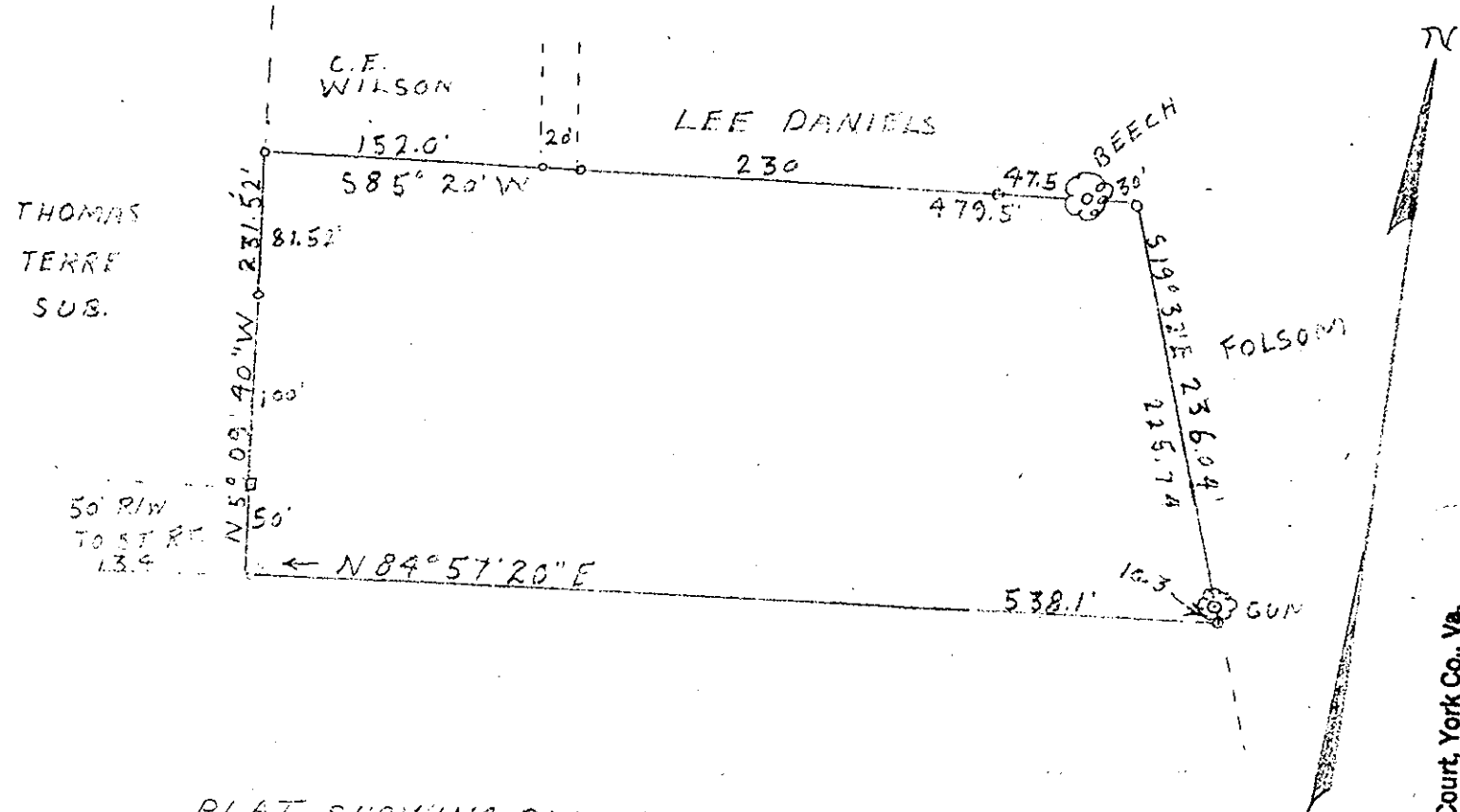


566



PLAT SHOWING PARCEL OF LAND BELONGING TO
 J. E. & C. S. THOMAS AND S. F. & H. A. FILER LOCATED IN
 BETHEL DISTRICT YORK COUNTY, VIRGINIA
 SCALE 1"=100' SURVEYED JAN. 1956
 Wetherill D. Thomas C.L.S. # 579

Filed in the Clerk's Office, Circuit Court, York Co., Va.
 the 20 day of June 1956

Teste:

Edith M. Elliott, Clerk

Edith M. Elliott

Plat Book No. 9 Page 566 D.O.