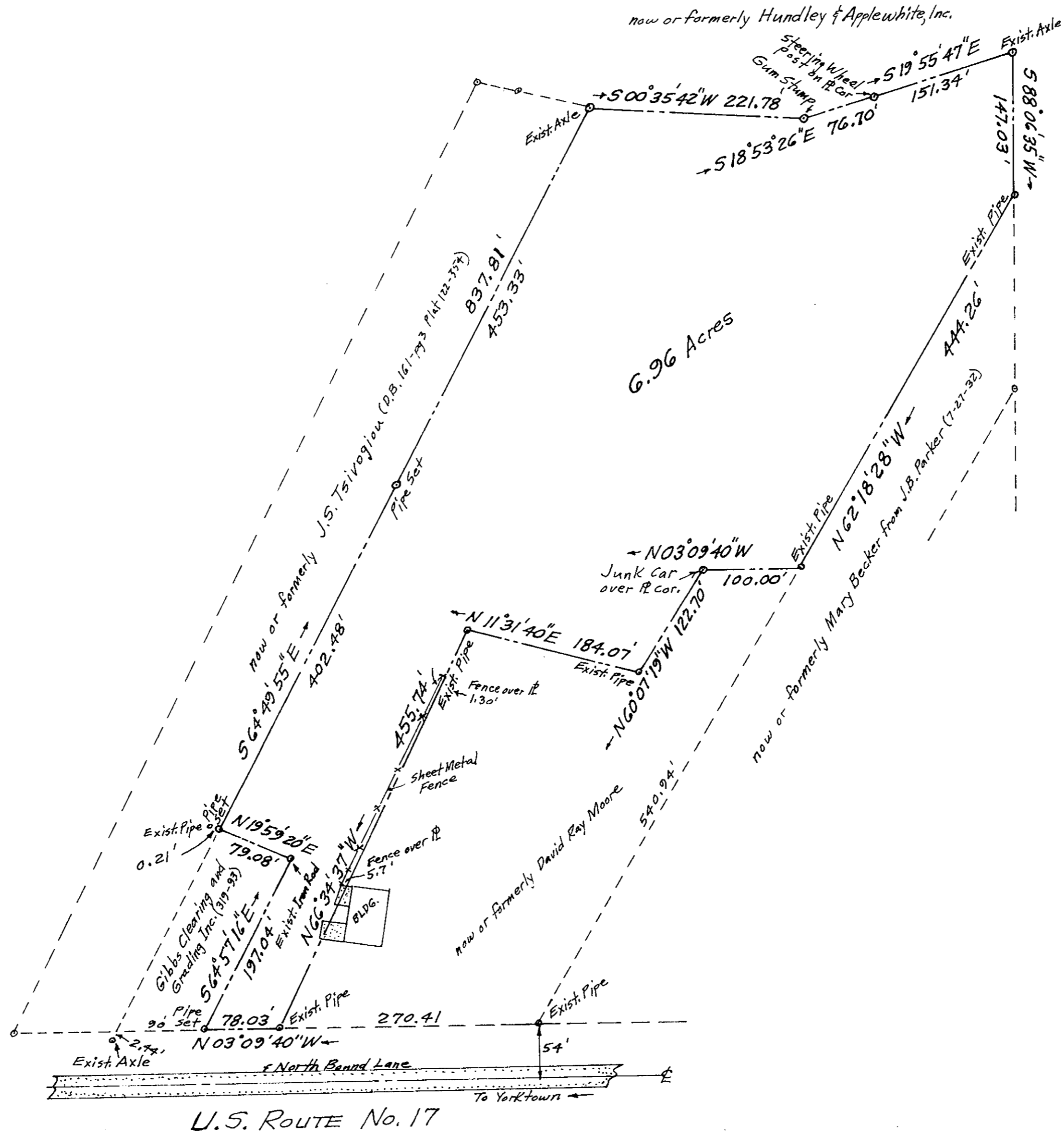
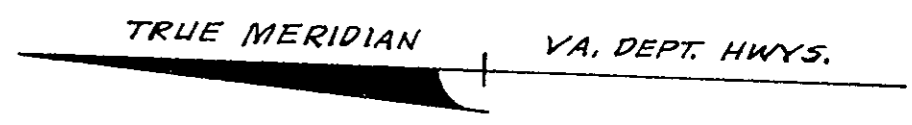


Vicinity Sketch  
1" = 2000'



now or formerly Hundley & Applewhite, Inc.



NOTE:  
The Bearings shown on this map are from STATE HWY. PLAT BOOK #1-Pg 5, not the many Magnetic Bearings shown on recorded plats before the highway widening.



Plat Of  
**YVONNE S. KELLY ESTATE**  
York County, Virginia

John W. Lawson: Cert. Land Surveyor  
scale: 1"=100'  
April 22, 1982

Filed in the Clerk's Office, Circuit Court, York Co., Va.  
the 14<sup>th</sup> day of July 1982

Teste:  
Edith M. Elliott, Clerk