

Plat Book No. 10 Page 19

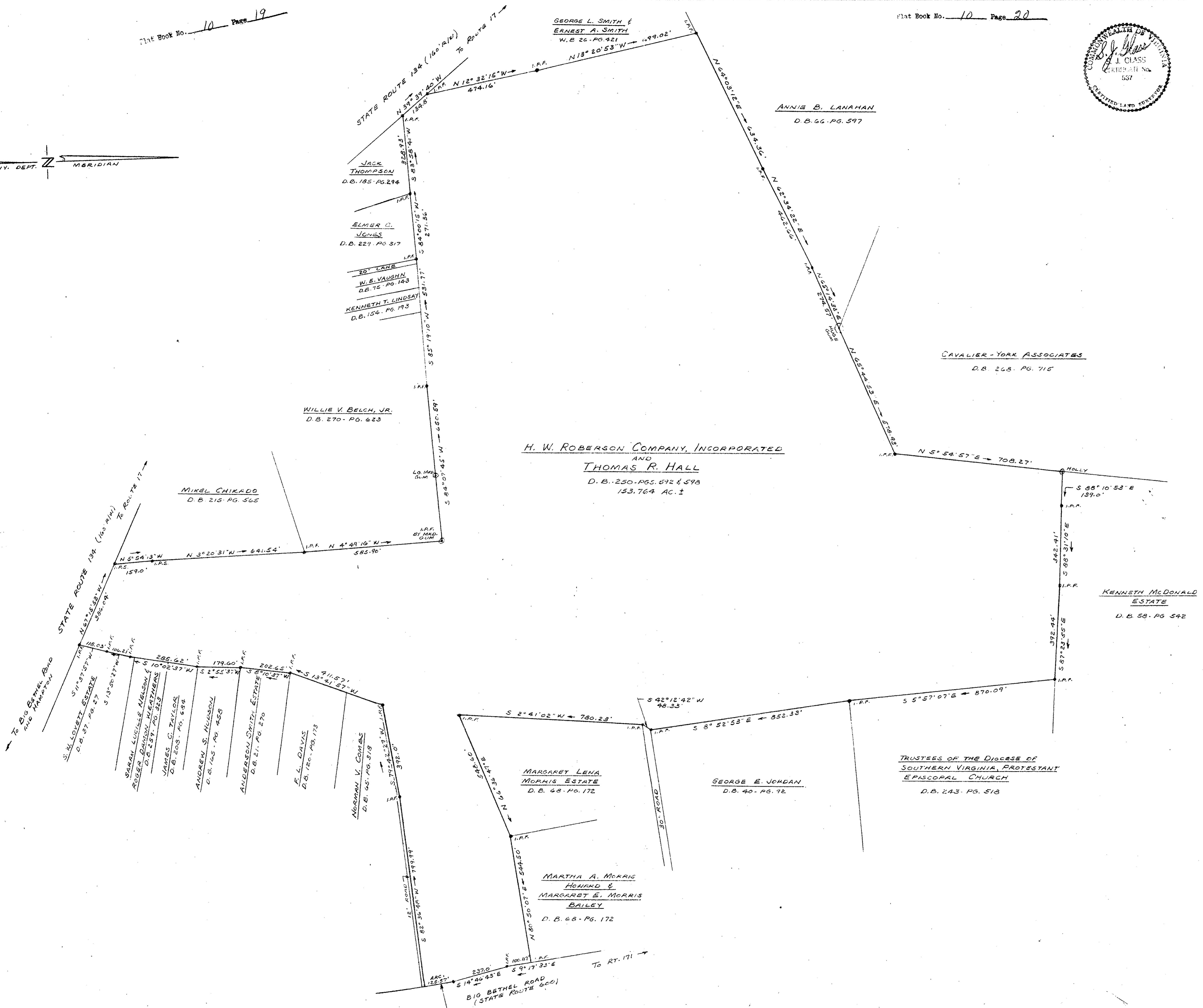
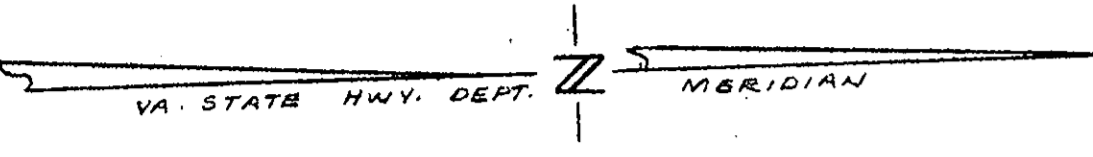
Plat Book No. 10 Page 20



PLAT SHOWING PROPERTY OF H. W. ROBERSON COMPANY, INCORPORATED AND THOMAS R. HALL

BEING LOCATED ON STATE ROUTE 134 AND BIG BETHEL ROAD BETHEL DISTRICT, YORK COUNTY, VIRGINIA SCALE: 1" = 200' NOVEMBER 1, 1974

S. J. GLASS AND ASSOCIATES ENGINEERING SERVICES - HAMPTON, VIRGINIA



DEED REFERENCES:
D.B. 44 - PG. 559
D.B. 73 - PG. 433

PLAT REFERENCES:
D.B. 268 - PG. 715
P.B. 3 - PGS. 6 & 32
D.B. 229 - PG. 319
H.P.B. 3 - PGS. 537 & 540
P.B. 8 - PGS. 101, 283, 299, 329, 334, 373 & 422
D.O. 250 - PG. 600
D.B. 20 - PG. 126
D.B. 205 - PG. 273
P.B. 4 - PG. 137

NOTE: PLAT OF A SUBDIVISION OF THIS PROPERTY WAS VACATED IN D.B. 229 - PG. 265.

Filed in the Clerk's Office, Circuit Court, York Co., Va. the 6th day of June 1974

Teste: Edith M. Elliott, Clerk D.C.

CURVE DATA

DELTA	2° 32'
ARC	125.57'
RADIUS	2639.79'
TANGENT	62.86'
CHORD	125.56'
CHD. BR.	S 7° 48' 21" E

Filed in the Clerk's Office, Circuit Court, York Co., Va. the 6th day of June 1974

Teste: Edith M. Elliott, Clerk D.C.

Plat Book No. 10 Page 19 & 20