

NO.	DELTA	RADIUS	ARC	TANGENT	CHORD	CH BEARING
1	88°29'45"	25.00'	38.61'	24.35'	34.89'	S 15°54'25" W
2	88°29'39"	25.00'	38.61'	24.35'	34.89'	S 75°35'43" E
3	14°13'34"	2450.00'	608.32'	305.73'	606.76'	S 38°27'45" E
4	115°51'22"	325.00'	657.18'	518.67'	550.80'	N 76°29'47" E
5	115°51'22"	275.00'	556.07'	438.87'	466.06'	N 76°29'47" E
6	26°45'57"	2400.00'	1121.16'	571.00'	1111.00'	S 32°11'34" E
7	91°29'20"	25.00'	39.92'	25.66'	35.81'	S 76°59'25" E
8	12°36'08"	275.00'	60.49'	30.37'	60.36'	N 50°57'55" E
9	16°04'37"	325.00'	91.19'	45.90'	90.89'	S 49°13'37" W
10	90°00'00"	25.00'	39.27'	25.00'	35.26'	S 12°15'36" W
11	96°28'08"	26.75'	45.04'	29.95'	39.90'	N 71°36'36" W
12	90°24'55"	25.00'	39.44'	25.17'	35.48'	N 14°56'49" E
13	04°56'28"	1125.15'	97.03'	48.54'	97.00'	N 32°43'56" W
14	25°46'44"	200.17'	90.06'	45.81'	89.30'	N 46°22'06" W
17	07°11'27"	1950.00'	244.74'	122.53'	244.58'	S 27°39'02" E
30	15°54'58"	2450.00'	680.47'	342.44'	678.28'	S 20°22'58" E
31	08°40'47"	2000.00'	302.98'	151.78'	302.69'	S 28°23'41" E

CURVE DATA

NOTE:

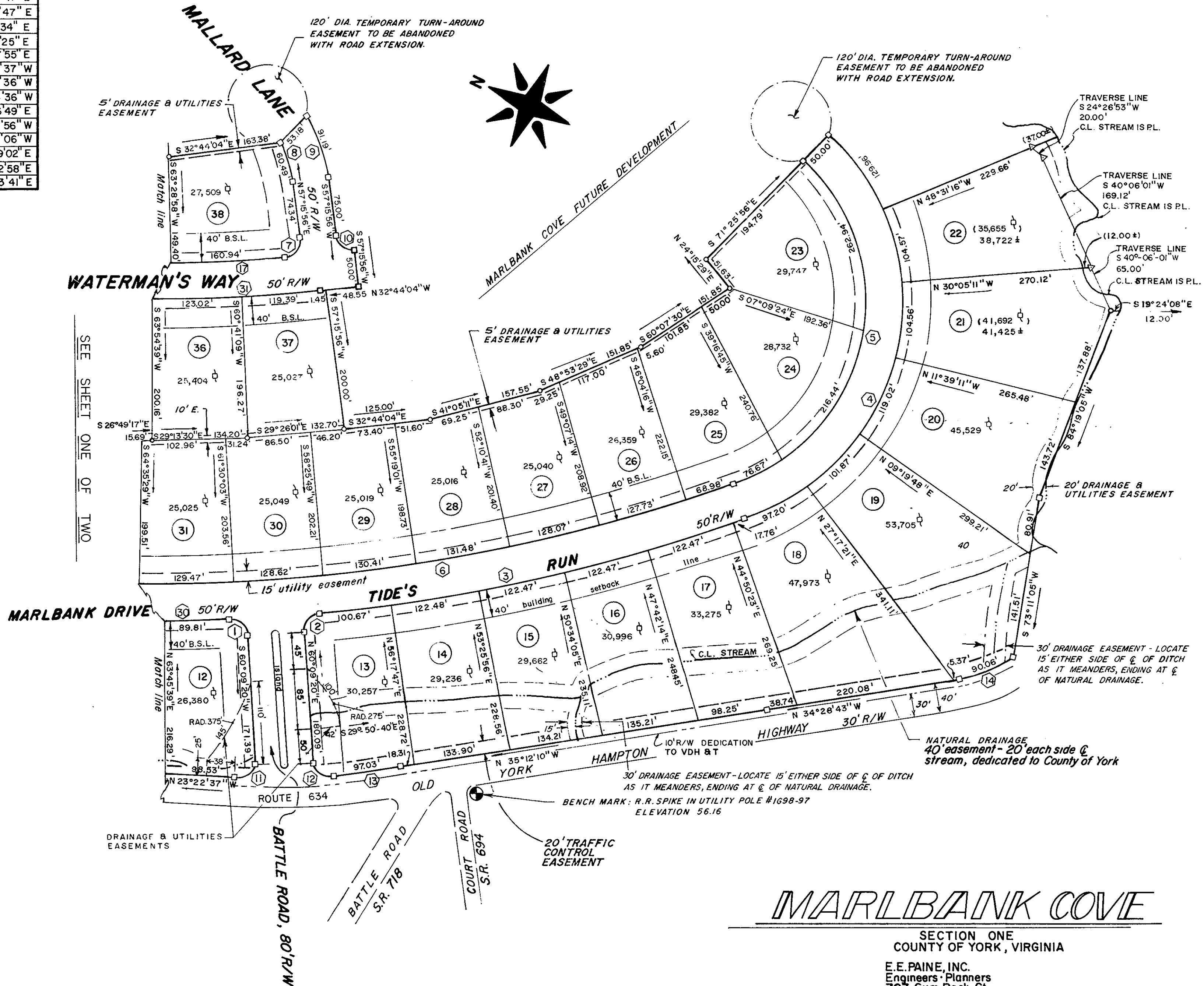
- (DIST) IS THE DISTANCE FROM THE TRAVERSE LINE TO ϕ OF THE STREAM.
- (AREA ϕ) REPRESENTS THE LOT AREA WITHIN THE TRAVERSE LINE.
- AREA \pm REPRESENTS APPROX. TOTAL LOT AREA TO ϕ OF STREAM.
- AREA ϕ INDICATES THE LOT AREA, SQ. FT.

APPROVED

York County Board of Supervisors

by *[Signature]*
Agent

date *May 15, 1985*



SEE SHEET ONE OF TWO

MARLBANK COVE

SECTION ONE
COUNTY OF YORK, VIRGINIA

E.E. PAINE, INC.
Engineers-Planners
707 Gum Rock Ct.
NEWPORT NEWS, VIRGINIA

SCALE 1" = 100' DATE: APRIL, 1985
SHEET 2 OF 2

State of Virginia
County of York
In the Clerk's Office of the Circuit Court for the County of York, Virginia, this map was presented and admitted to record as the law directs this 16th day of May 1985 in Plat Book 10 Page 114
Teste *[Signature]* Clerk
By: *[Signature]* D.C.