

I HEREBY CERTIFY THAT THIS SURVEY, TO THE BEST OF MY KNOWLEDGE AND BELIEF, IS CORRECT AND COMPLIES WITH THE MINIMUM PROCEDURES AND STANDARDS ESTABLISHED BY THE VIRGINIA BOARD OF ARCHITECTS, PROFESSIONAL ENGINEERS, LAND SURVEYORS AND CERTIFIED LANDSCAPE ARCHITECTS.

SIGNED: *C. E. Newbaker III*  
C. E. NEWBAKER III



UNITED STATES NAVAL MINE DEPOT



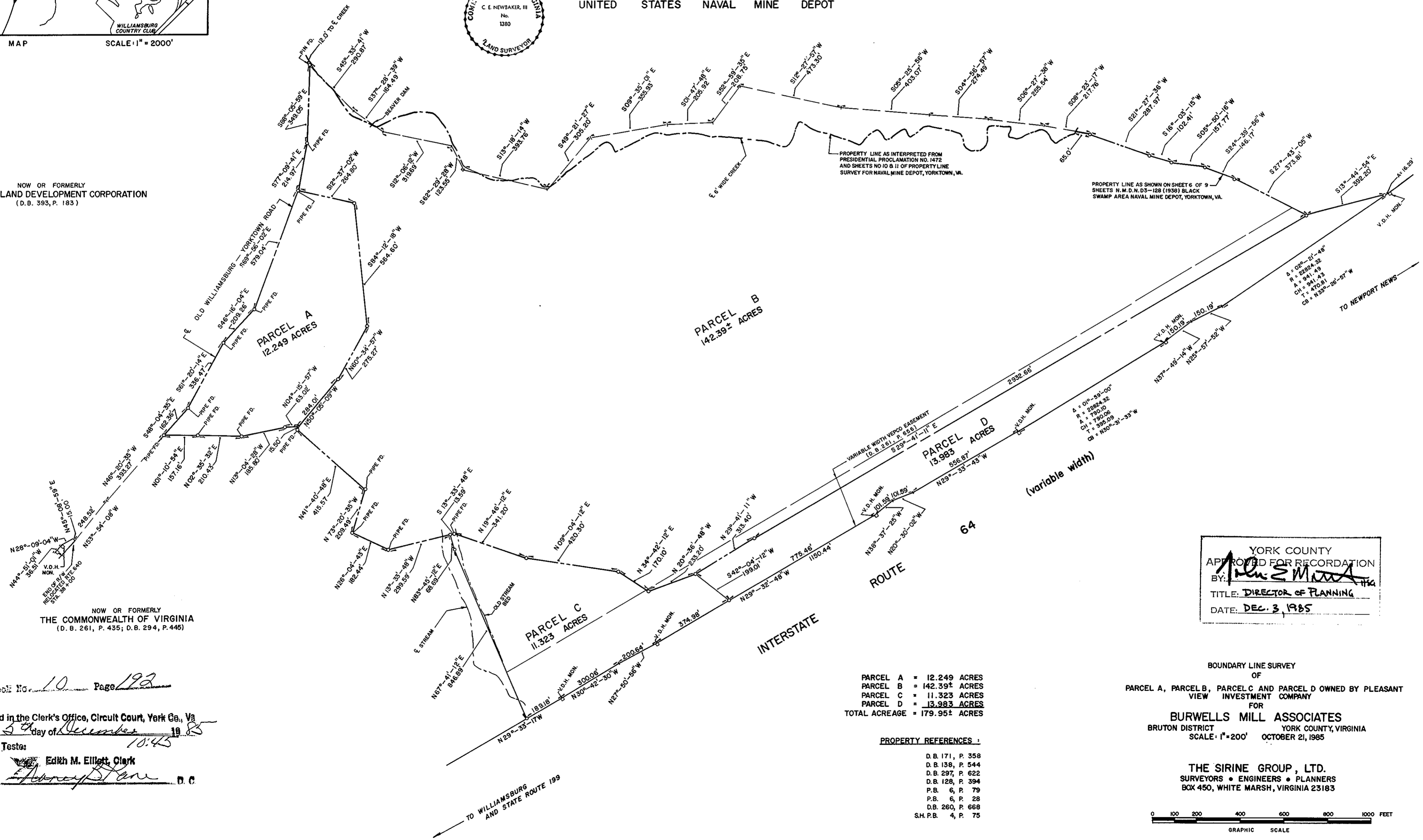
NOW OR FORMERLY  
DELTA LAND DEVELOPMENT CORPORATION  
(D.B. 393, P. 183)

NOW OR FORMERLY  
THE COMMONWEALTH OF VIRGINIA  
(D.B. 261, P. 435; D.B. 294, P. 446)

Plat Book No. 10 Page 192

Filed in the Clerk's Office, Circuit Court, York Co., Va  
the 5<sup>th</sup> day of December, 1985

Teste:  
*Edith M. Elliott, Clerk*  
*Harvey Stone* D.C.



PROPERTY LINE AS INTERPRETED FROM  
PRESIDENTIAL PROCLAMATION NO. 1472  
AND SHEETS NO 10 & 11 OF PROPERTY LINE  
SURVEY FOR NAVAL MINE DEPOT, YORKTOWN, VA.

PROPERTY LINE AS SHOWN ON SHEET 6 OF 9  
SHEETS N.M.D.N. D3-128 (1938) BLACK  
SWAMP AREA NAVAL MINE DEPOT, YORKTOWN, VA.

A = 0°00'-31'-48"  
R = 22804.32  
A = 941.49  
CH = 470.51  
CB = 8359'-28'-57" W

A = 0°00'-58'-00"  
R = 22804.32  
A = 790.10  
CH = 395.09  
CB = 8300'-31'-33" W

YORK COUNTY  
APPROVED FOR RECORDATION  
BY: *John S. Miller*  
TITLE: DIRECTOR OF PLANNING  
DATE: DEC. 3, 1985

PARCEL A = 12.249 ACRES  
PARCEL B = 142.39± ACRES  
PARCEL C = 11.323 ACRES  
PARCEL D = 13.983 ACRES  
TOTAL ACREAGE = 179.95± ACRES

PROPERTY REFERENCES:  
D.B. 171, P. 358  
D.B. 138, P. 544  
D.B. 297, P. 622  
D.B. 128, P. 394  
P.B. 6, P. 79  
P.B. 6, P. 28  
D.B. 260, P. 668  
S.H.P.B. 4, P. 75

BOUNDARY LINE SURVEY  
OF  
PARCEL A, PARCEL B, PARCEL C AND PARCEL D OWNED BY PLEASANT  
VIEW INVESTMENT COMPANY  
FOR  
BURWELLS MILL ASSOCIATES  
BRUTON DISTRICT YORK COUNTY, VIRGINIA  
SCALE: 1" = 200' OCTOBER 21, 1985

THE SIRINE GROUP, LTD.  
SURVEYORS • ENGINEERS • PLANNERS  
BOX 450, WHITE MARSH, VIRGINIA 23183

