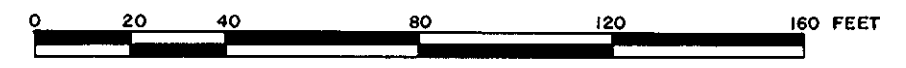


YORK CROSSING TOWNHOUSES SECTION ONE

GRAFTON DISTRICT — COUNTY OF YORK, VIRGINIA

THE SIRINE GROUP, LTD.
SURVEYORS-ENGINEERS-PLANNERS
P.O. BOX 450, ROUTE 17
WHITE MARSH, VIRGINIA
23183

Scale: 1" = 40' January, 1986



GRAPHIC SCALE
SHEET 2 OF 2

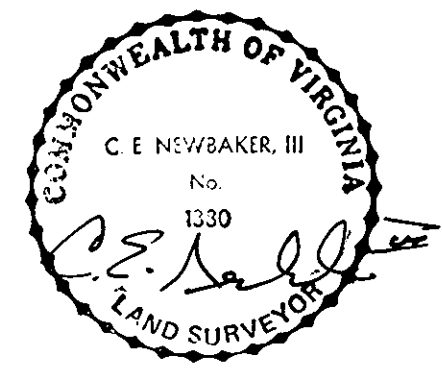
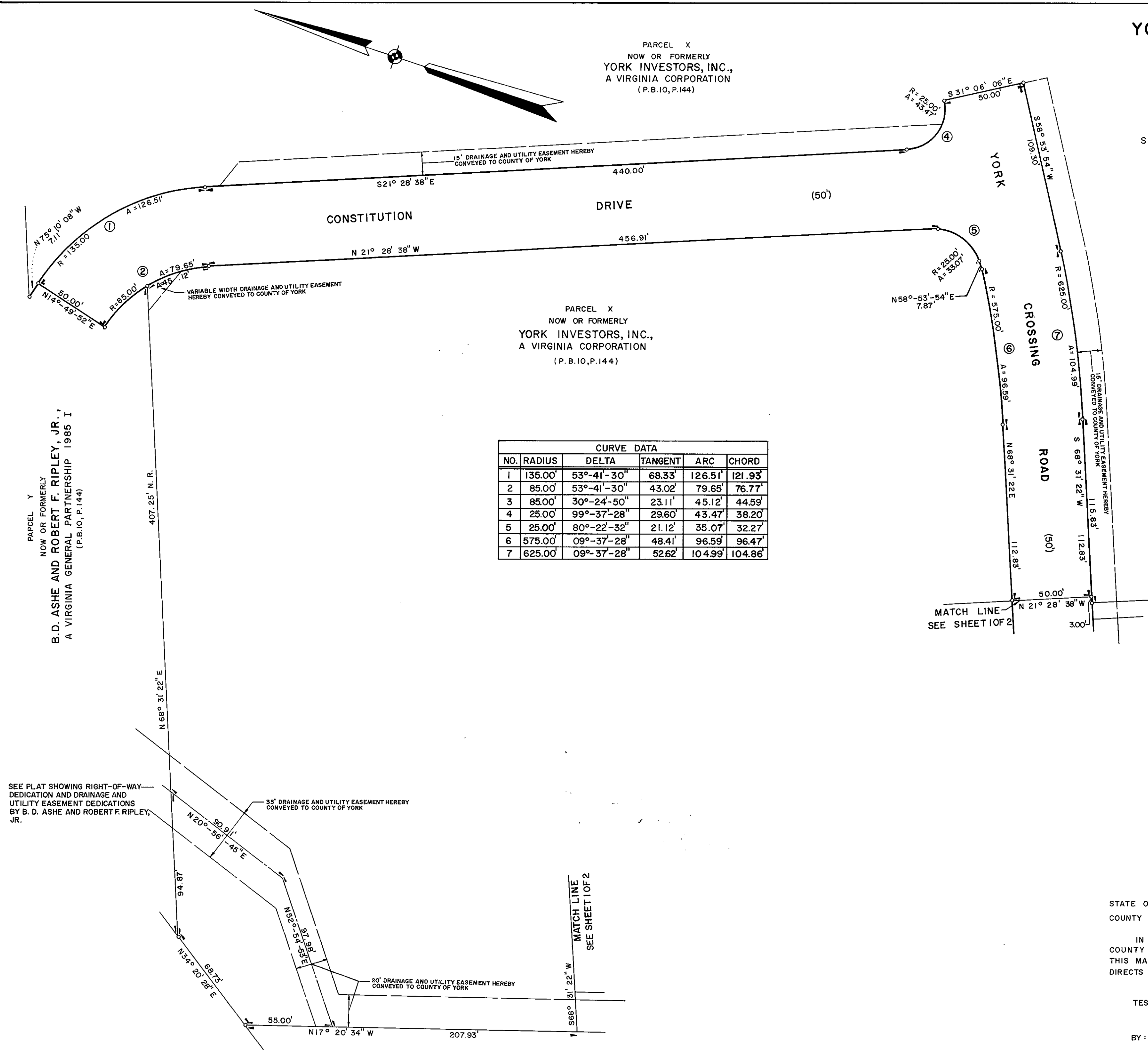
PARCEL X
NOW OR FORMERLY
YORK INVESTORS, INC.,
A VIRGINIA CORPORATION
(P.B.10, P.144)

PARCEL X
NOW OR FORMERLY
YORK INVESTORS, INC.,
A VIRGINIA CORPORATION
(P.B.10, P.144)

PARCEL X
NOW OR FORMERLY
YORK INVESTORS, INC.,
A VIRGINIA CORPORATION
(P.B.10, P.144)

PARCEL Y
NOW OR FORMERLY
B. D. ASHE AND ROBERT F. RIPLEY, JR.,
A VIRGINIA GENERAL PARTNERSHIP 1985 I
(P.B.10, P.144)

CURVE DATA					
NO.	RADIUS	DELTA	TANGENT	ARC	CHORD
1	135.00'	53°-41'-30"	68.33'	126.51'	121.93'
2	85.00'	53°-41'-30"	43.02'	79.65'	76.77'
3	85.00'	30°-24'-50"	23.11'	45.12'	44.59'
4	25.00'	99°-37'-28"	29.60'	43.47'	38.20'
5	25.00'	80°-22'-32"	21.12'	35.07'	32.27'
6	575.00'	09°-37'-28"	48.41'	96.59'	96.47'
7	625.00'	09°-37'-28"	52.62'	104.99'	104.86'



STATE OF VIRGINIA
COUNTY OF YORK

IN THE CLERK'S OFFICE OF THE CIRCUIT COURT FOR THE COUNTY OF YORK THE 14th DAY OF February, 1986 THIS MAP WAS PRESENTED AND ADMITTED TO RECORD AS THE LAW DIRECTS IN PLAT BOOK 10, PAGE 213-A.

TESTE: EDITH M. ELLIOTT, CLERK
CLERK

BY: Carol Dosselmeier, D.C.
8:40 AM.

PARCEL B
(P.B.10, P.108)