

BURNT BRIDGE RUN CONDOMINIUM

PHASE ONE
(CONVERTABLE & WITHDRAWABLE LAND)
YORK COUNTY, VIRGINIA

JOHNSON • BAIRD AND ASSOCIATES
4396-B ROUTE 134 — TABB, VIRGINIA — 23602

SCALE: 1" = 20'

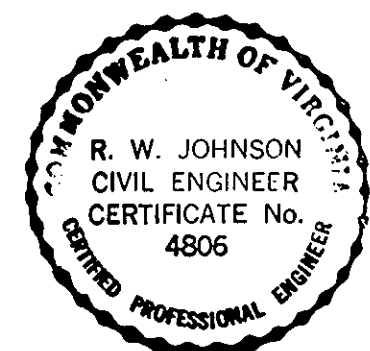
DATE MAY 15, 1986
FILE NO. 84-59

SHEET 5
OF 5

THIS PLAT IS EXHIBIT C-5 OF THE AMENDMENT TO THE DECLARATION OF BURNT BRIDGE RUN CONDOMINIUM, DATED MAY 15, 1986 AND RECORDED IN DEED BOOK 444, PAGE 542.

I CERTIFY THIS PLAN IS ACCURATE AND COMPLIES WITH THE PROVISIONS OF SECTION 55-79.58(b) OF THE CODE OF VIRGINIA OF 1950, AS AMENDED, AND ALL UNITS SHOWN HEREON HAVE BEEN SUBSTANTIALLY COMPLETED EXCEPT AS OTHERWISE NOTED.

R. Wayne Johnson, P.E. #4806
R. WAYNE JOHNSON, P.E.



NOTES:

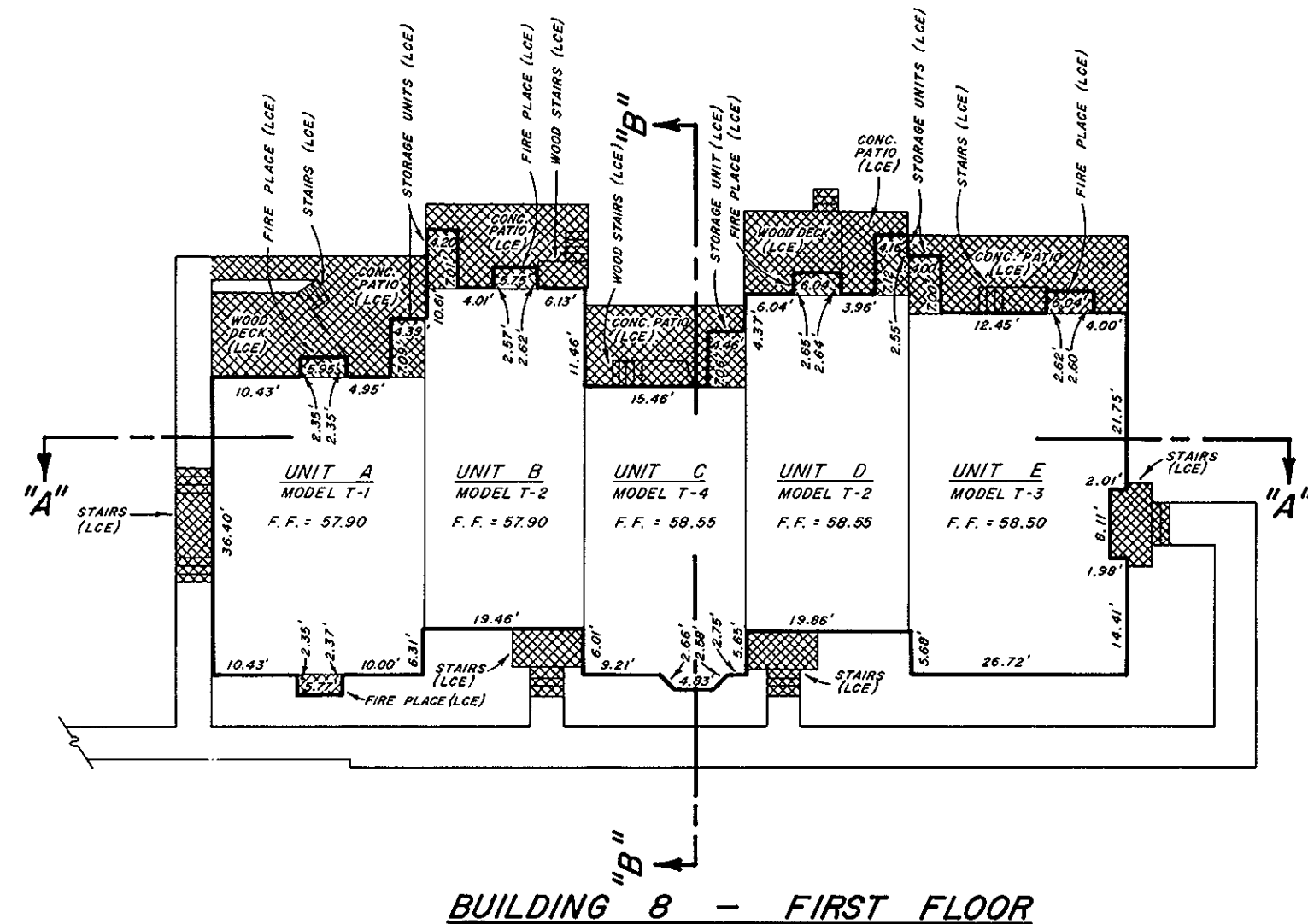
- VERTICAL DATA BASED ON U.S.C. & G.S. 1929 DATUM.
- HORIZONTAL DISTANCES SHOWN ARE OUTSIDE BUILDING DIMENSIONS AS DETERMINED BY FIELD SURVEY.

3. UNIT BOUNDARIES

A. EACH UNIT SHALL INCLUDE THE ENCLOSED SPACE DELINEATED BY THE FOLLOWING BOUNDARIES: (I) THE LOWER HORIZONTAL BOUNDARY IS THE HORIZONTAL PLANE(S), THE ELEVATION OF WHICH COINCIDES WITH THE ELEVATION OF THE UPPER SURFACE OF THE SUB FLOORING; (II) THE VERTICAL (LATERAL OR PERIMETRIC) BOUNDARIES ARE THE VERTICAL PLANES COINCIDENTAL WITH THE SURFACES OF THE PERIMETER WALL STUDS WHICH FACE THE INTERIOR OF THE UNIT OR, THE INTERIOR FACE OF THE FIRE WALLS; (III) THE UPPER HORIZONTAL BOUNDARY IS THE HORIZONTAL PLANE(S), THE ELEVATION OF WHICH COINCIDES WITH THE ELEVATION OF THE LOWER SURFACE OF THE ROOF TRUSSES WHICH FACE TOWARD THE INTERIOR OF THE UNIT.

LEGEND:

- ↑ INDICATES BUILDING SECTION
- ▨ INDICATES COMMON ELEMENT
- ▩ INDICATES LIMITED COMMON ELEMENT (L.C.E.)



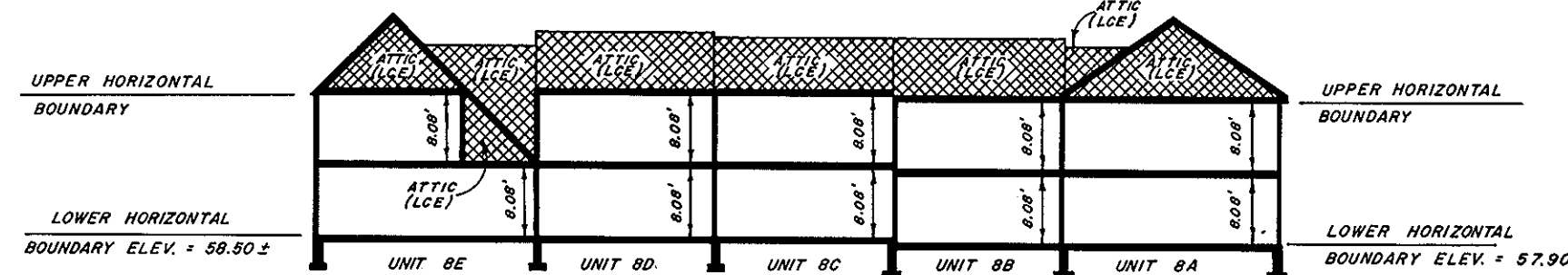
BUILDING 8 - FIRST FLOOR



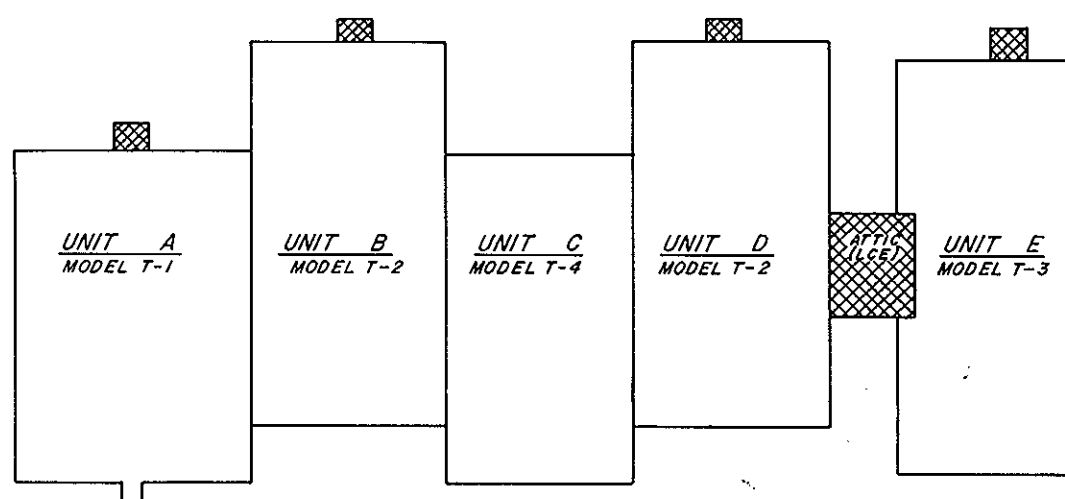
BUILDING 8 - FRONT ELEVATION



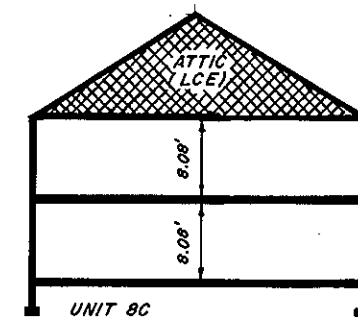
BUILDING 8 - REAR ELEVATION



BUILDING SECTION "A"-A



BUILDING 8 - SECOND FLOOR



BUILDING SECTION "B"-B

BUILDING 8

Deed Book No. 10 Page 252

Filed in the Clerk's Office, Circuit Court, York Co., Va.
the 19th day of June 1986

Tested: 10:07

Eddy M. Elliott, Clerk
D.C.

