


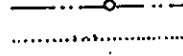
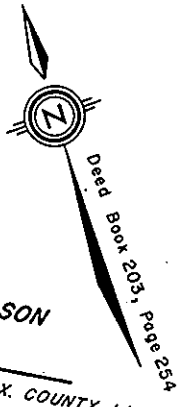


LEGEND

-  PIPE FOUND
-  MARKED TREE FND.
-  PIPE SET
-  10' V.D.H.&T. DRAINAGE EASEMENT

CURVE		DATA					
No.	DELTA	RADIUS	ARC	CHORD	TAN.	CH.	BRG.
①	7°13'45"	793.51'	100.12'	100.05'	50.13'	N52°39'15"W	
②	6°38'58"	793.51'	92.09'	92.04'	46.10'	N48°42'54"W	
③	5°54'09"	843.51'	86.90'	86.86'	43.49'	S48°20'22"E	

HUNT WOODS P.B. 9 SECTION 2 PG. 600

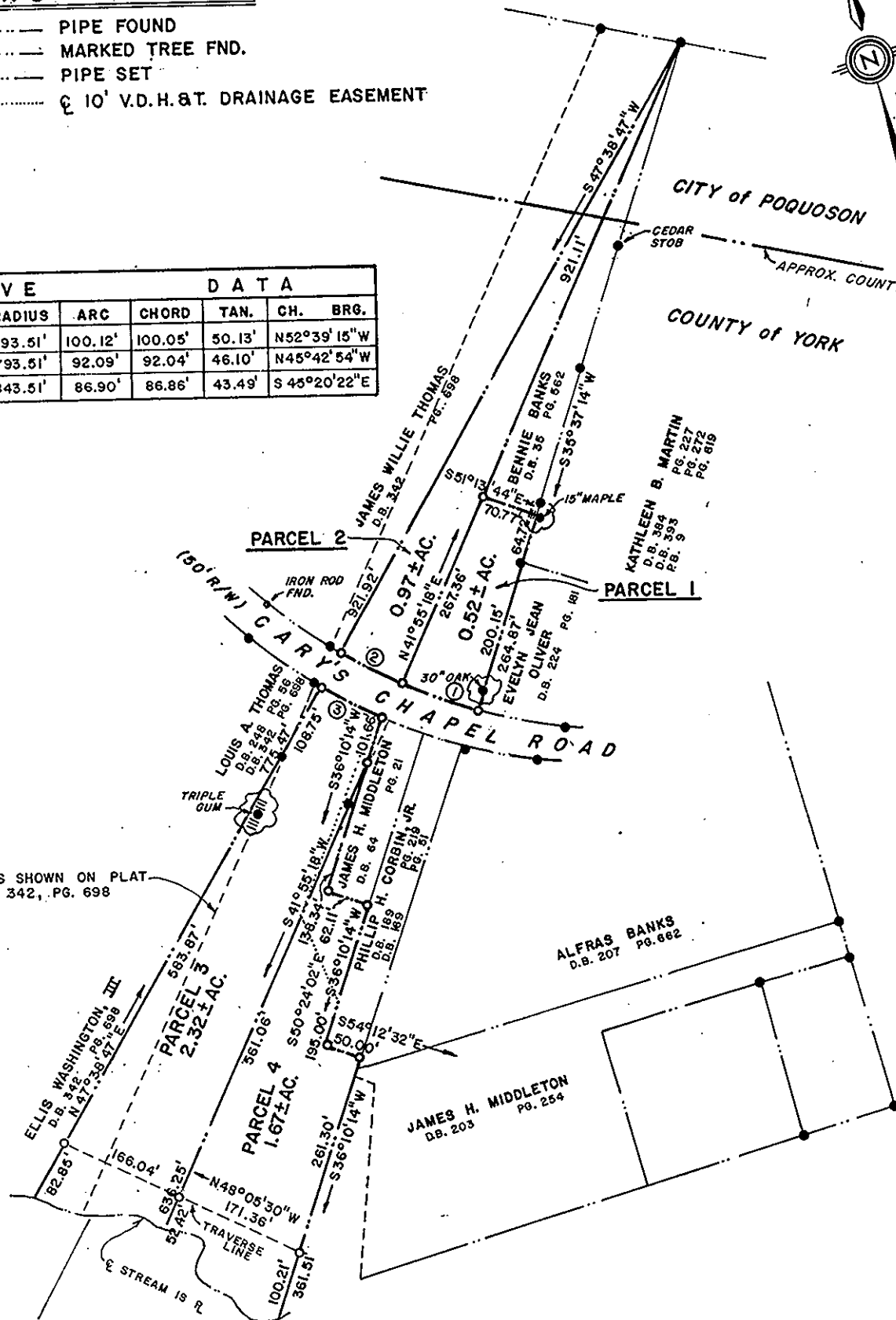


CITY of POQUOSON

COUNTY of YORK

APPROX. COUNTY LINE

LINE AS SHOWN ON PLAT
© D.B. 342, PG. 698



- REFERENCES:**
- Plat Book 2, Page 37
 - State Highway Plat Book 3, Page 88
 - Deed Book 28, Page 61
 - Will Book 19, Page 523
 - TAX MAP 38, PARCELS 91 & 94

YORK COUNTY
APPROVED FOR RECORDATION
BY: *J. Mark Carter*
TITLE: *Director of Planning*
DATE: *7-8-87*

Cundiff H. Simmons
CUNDIFF H. SIMMONS, C.L.S.

PLAT OF PROPERTY OF
MELVIN GRIFFIN ESTATE
REMAINDER OF LOTS No. 9 & 10
LEWIS GRIFFIN ESTATE
BETHEL DISTRICT, YORK COUNTY, VIRGINIA
HUGH C. DISCHINGER & ASSOCIATES, PC.
ENGINEERS - SURVEYORS
York County, Virginia

Scale: 1" = 200'	Revisions: July 7, 1987
Date: August 8, 1986	
Job No.: 86-3-1750	