

PLAT OF
BANBURY CROSS
 SECTION 5
 COUNTY OF YORK, VIRGINIA
 OWNER/DEVELOPER: POWHATAN SHORES, INC.
 AES, A PROFESSIONAL CORP.
 Architecture, Engineering, Surveying
 176 J. Jamestown Rd. (804) 253-0040
 WILLIAMSBURG, VIRGINIA 23185
SHEET 2 OF 2

SCALE: 1" = 100'

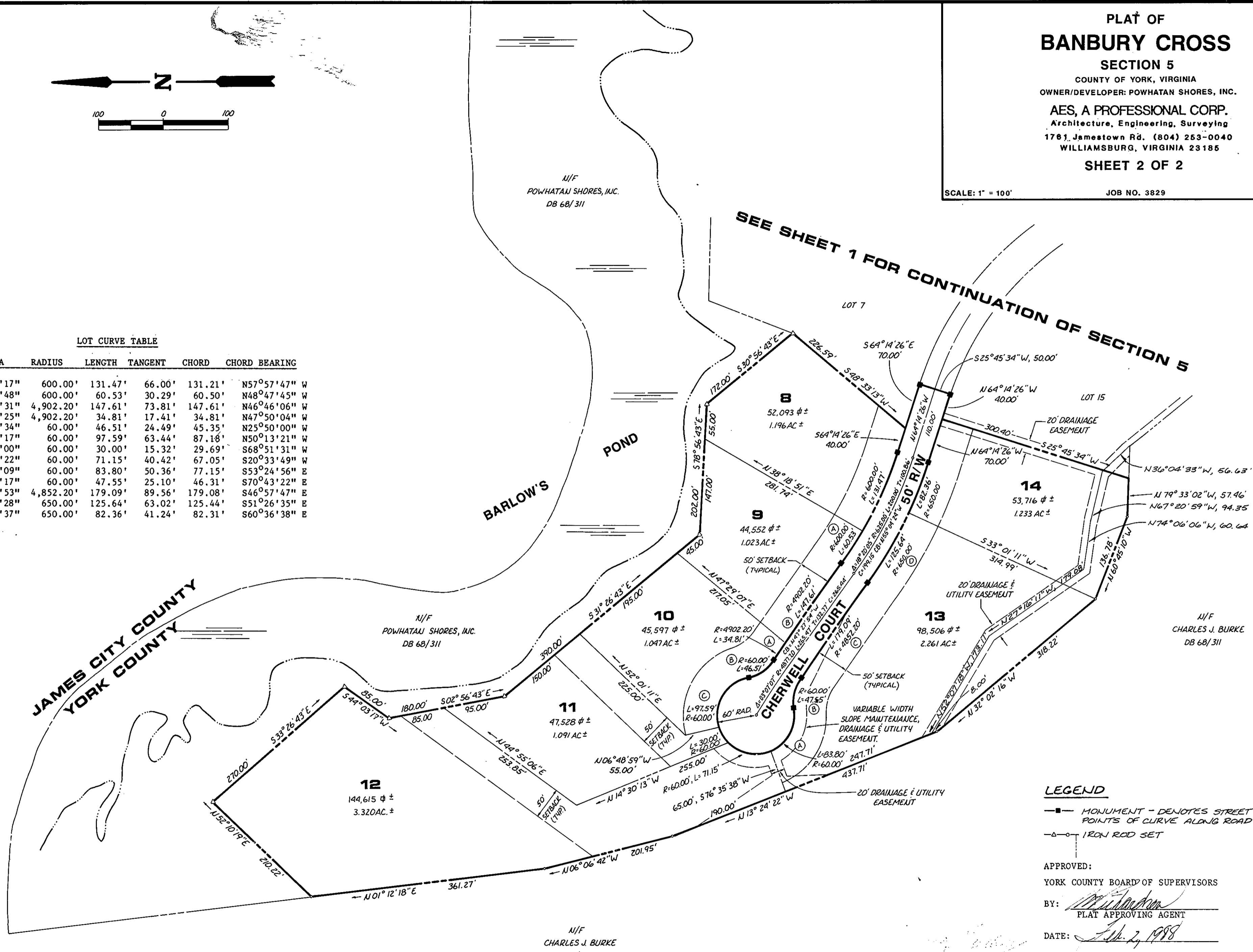
JOB NO. 3829

SEPT. 1, 1987



LOT CURVE TABLE

NO.	DELTA	RADIUS	LENGTH	TANGENT	CHORD	CHORD BEARING
8	12°33'17"	600.00'	131.47'	66.00'	131.21'	N57°57'47" W
9A	5°46'48"	600.00'	60.53'	30.29'	60.50'	N48°47'45" W
9B	1°43'31"	4,902.20'	147.61'	73.81'	147.61'	N46°46'06" W
10A	0°24'25"	4,902.20'	34.81'	17.41'	34.81'	N47°50'04" W
10B	44°24'34"	60.00'	46.51'	24.49'	45.35'	N25°50'00" W
10C	93°11'17"	60.00'	97.59'	63.44'	87.18'	N50°13'21" W
11	28°39'00"	60.00'	30.00'	15.32'	29.69'	S68°51'31" W
12	67°56'22"	60.00'	71.15'	40.42'	67.05'	S20°33'49" W
13A	80°01'09"	60.00'	83.80'	50.36'	77.15'	S53°24'56" E
13B	45°24'17"	60.00'	47.55'	25.10'	46.31'	S70°43'22" E
13C	2°06'53"	4,852.20'	179.09'	89.56'	179.08'	S46°57'47" E
13D	11°04'28"	650.00'	125.64'	63.02'	125.44'	S51°26'35" E
14	7°15'37"	650.00'	82.36'	41.24'	82.31'	S60°36'38" E



LEGEND

- MONUMENT - DENOTES STREET CORNERS & POINTS OF CURVE ALONG ROAD RIGHT-OF-WAY
- IRON ROD SET

APPROVED:
 YORK COUNTY BOARD OF SUPERVISORS
 BY: *[Signature]*
 PLAT APPROVING AGENT
 DATE: *Feb 2, 1988*

STATE OF VIRGINIA
 COUNTY OF YORK
 IN THE CLERK'S OFFICE OF THE CIRCUIT COURT FOR THE COUNTY OF YORK THE 2nd DAY OF Feb 1988, THIS MAP WAS PRESENTED AND ADMITTED TO RECORD AS THE LAW DIRECTS IN PLAT-BOOK 10, PAGE 465.
 TESTE: *[Signature]*
 CLERK
 BY: *Doraine Bender, D.C.*
 12:10 P.M.

EASEMENTS SHOWN THIS
 ARE HEREBY DEDICATED TO THE COUNTY OF YORK
 FOR DRAINAGE AND UTILITY.
 FRONT SETBACKS SHOWN THIS

N/F
 CHARLES J. BURKE
 DB 68/311

N/F
 POWHATAN SHORES, INC.
 DB 68/311

N/F
 CHARLES J. BURKE
 DB 68/311

SEE SHEET 1 FOR CONTINUATION OF SECTION 5

JAMES CITY COUNTY
 YORK COUNTY

BARLOW'S
 POND

CHEMELL COURT

POND

LOT 7

LOT 15

8
 52,093 sq ft
 1.196 AC ±

9
 44,552 sq ft
 1.023 AC ±

10
 45,597 sq ft
 1.047 AC ±

11
 47,528 sq ft
 1.091 AC ±

12
 144,615 sq ft
 3.320 AC ±

13
 98,506 sq ft
 2.261 AC ±

14
 53,716 sq ft
 1.233 AC ±