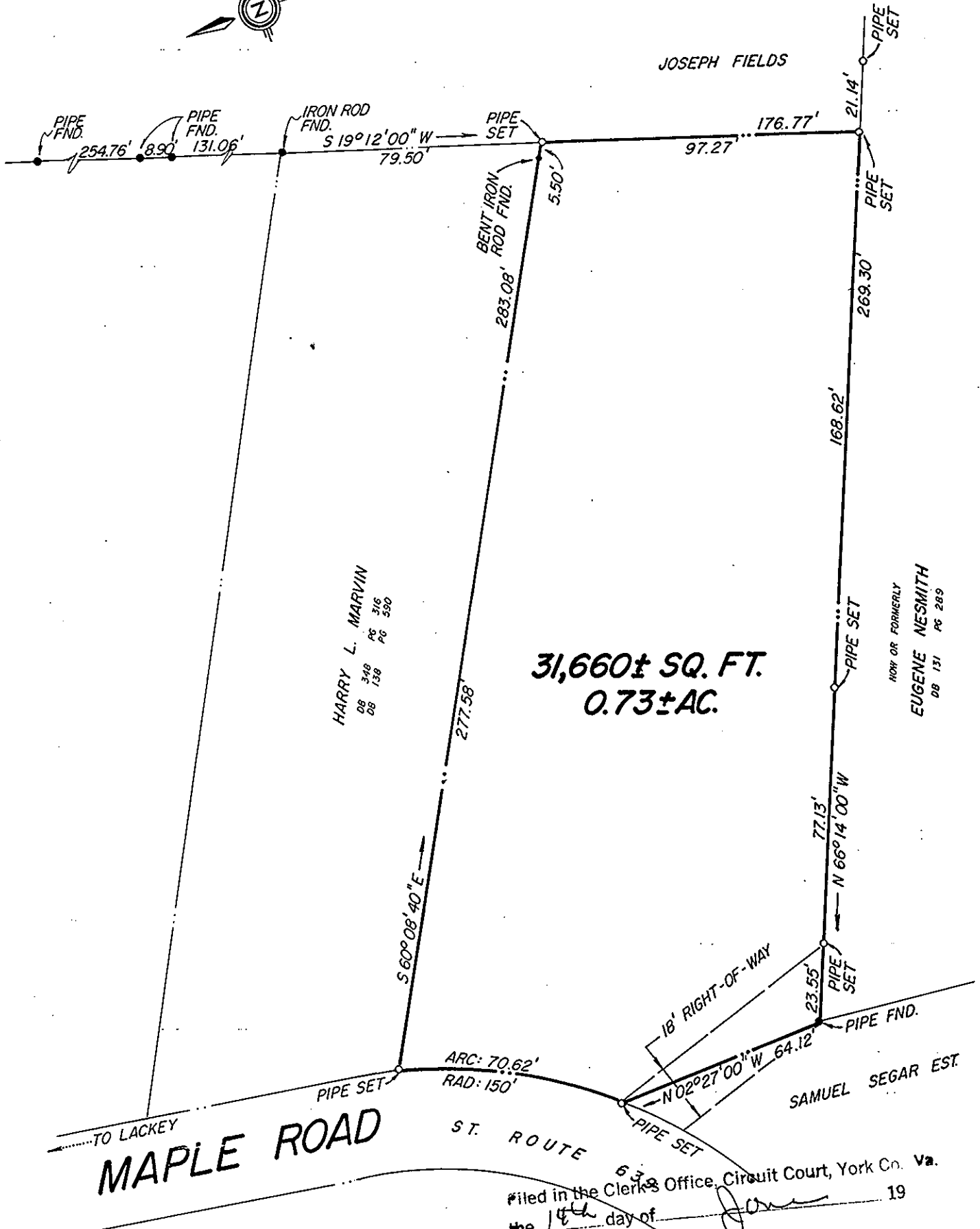


NORTH FROM PLAT DATED FEB. 20, 1960
BY A.W. PIERCE TITLED SURVEY OF
EUGENE NESMITH PROPERTY



31,660± SQ. FT.
0.73± AC.

HARRY L. MARVIN
DB 348 PG 316
DB 138 PG 590

NOW OR FORMERLY
EUGENE NESMITH
DB 131 PG 289

MAPLE ROAD

Filed in the Clerk's Office, Circuit Court, York Co. Va.
the 14th day of June 19

Teste:
Edith M. Elliott, Clerk
J. S. Berryman D.C.
PARCEL 17-6-82

REF: DB 150 PG 568

COMMONWEALTH OF VIRGINIA
H. C. DISCHINGER
CERTIFICATE No. 627
Hugh C. Dischinger
HUGH C. DISCHINGER, P.E. & C.L.S.

PLAT OF PROPERTY OF
MILES SEGAR ESTATE
NELSON DISTRICT, COUNTY OF YORK, VIRGINIA

HUGH C. DISCHINGER & ASSOCIATES, P.C.
ENGINEERS • SURVEYORS
York County, Virginia

Drawn: GJP	Scale: 1" = 40'	Revisions:
Checked: HCD	Date: APRIL 28, 1988	
Fb191 Pg 55&59	Job No: 87-8-1862	