

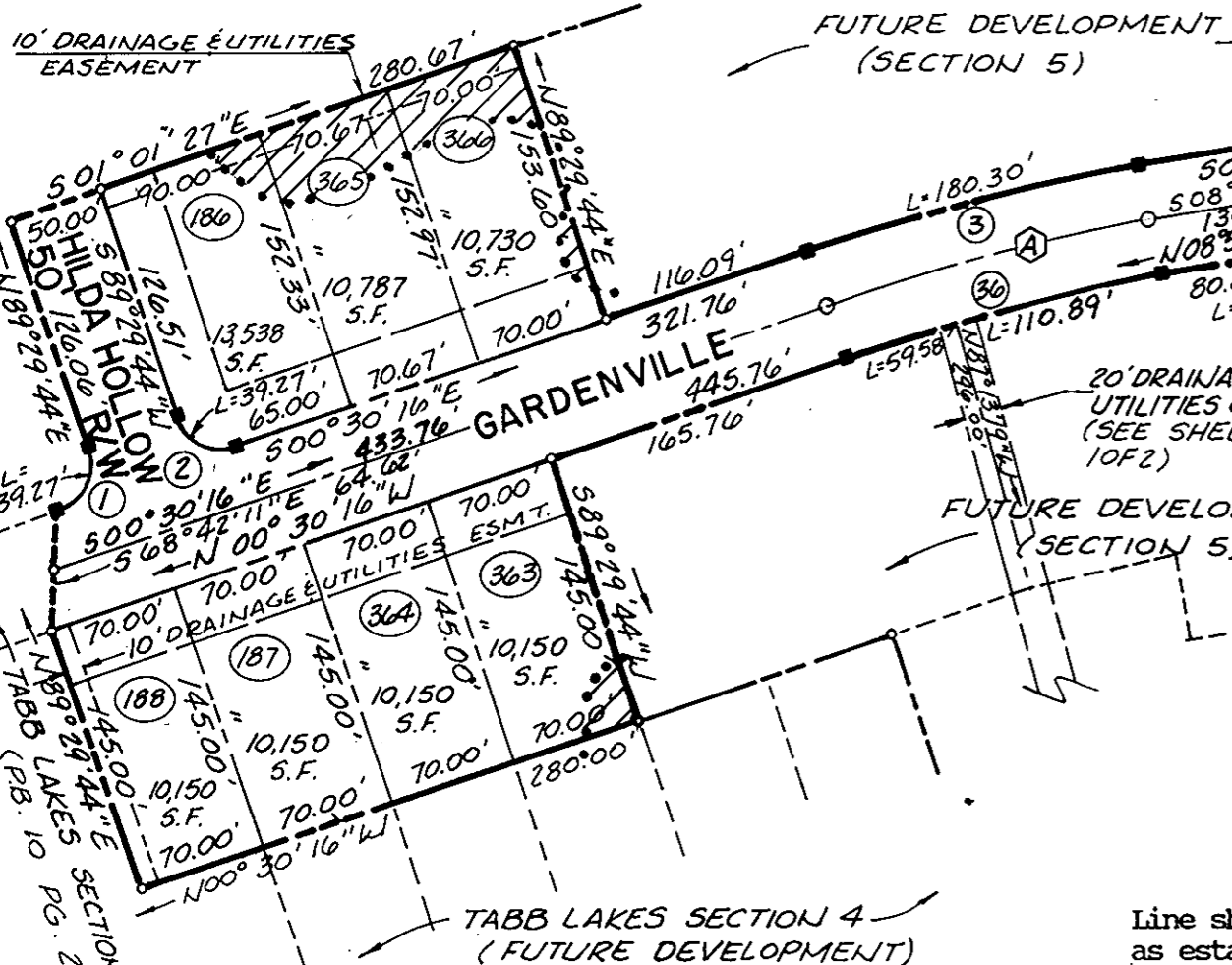
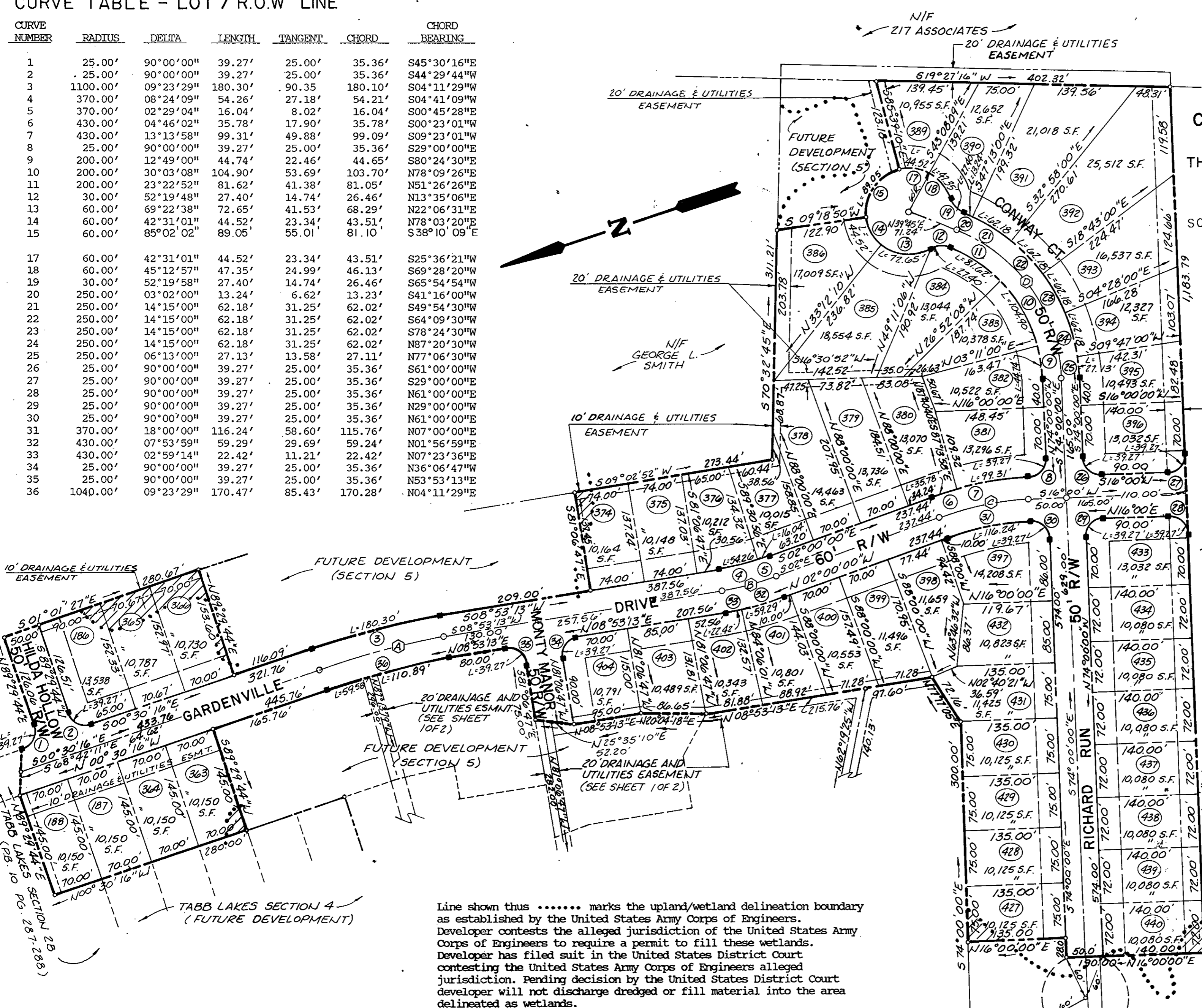
CURVE TABLE - LOT / R.O.W LINE

CURVE NUMBER	RADIUS	DELTA	LENGTH	TANGENT	CHORD	CHORD BEARING
1	25.00'	90°00'00"	39.27'	25.00'	35.36'	S45°30'16"W
2	25.00'	90°00'00"	39.27'	25.00'	35.36'	S44°29'44"W
3	1100.00'	09°23'29"	180.30'	90.35'	180.10'	S04°11'29"W
4	370.00'	08°24'09"	54.26'	27.18'	54.21'	S04°41'09"W
5	370.00'	02°29'04"	16.04'	8.02'	16.04'	S00°45'28"W
6	430.00'	04°46'02"	35.78'	17.90'	35.78'	S00°23'01"W
7	430.00'	13°13'58"	99.31'	49.88'	99.09'	S09°23'01"W
8	25.00'	90°00'00"	39.27'	25.00'	35.36'	S29°00'00"E
9	200.00'	12°49'00"	44.74'	22.46'	44.65'	S80°24'30"E
10	200.00'	30°03'08"	104.90'	53.69'	103.70'	N78°09'26"E
11	200.00'	23°22'52"	81.62'	41.38'	81.05'	N51°26'26"E
12	30.00'	52°19'48"	27.40'	14.74'	26.46'	N13°35'06"E
13	60.00'	69°22'38"	72.65'	41.53'	68.29'	N22°06'31"E
14	60.00'	42°31'01"	44.52'	23.34'	44.52'	N78°03'20"E
15	60.00'	85°02'02"	89.05'	55.01'	81.10'	S38°10'09"E
17	60.00'	42°31'01"	44.52'	23.34'	43.51'	S25°36'21"W
18	60.00'	45°12'57"	47.35'	24.99'	46.13'	S69°28'20"W
19	30.00'	52°19'58"	27.40'	14.74'	26.46'	S65°54'54"W
20	250.00'	03°02'00"	6.62'	3.23'	13.23'	S41°16'00"W
21	250.00'	14°15'00"	62.18'	31.25'	62.02'	S49°54'30"W
22	250.00'	14°15'00"	62.18'	31.25'	62.02'	S64°09'30"W
23	250.00'	14°15'00"	62.18'	31.25'	62.02'	S78°24'30"W
24	250.00'	14°15'00"	62.18'	31.25'	62.02'	N87°20'30"W
25	250.00'	06°13'00"	27.13'	13.58'	27.11'	N77°06'30"W
26	25.00'	90°00'00"	39.27'	25.00'	35.36'	S61°00'00"W
27	25.00'	90°00'00"	39.27'	25.00'	35.36'	S29°00'00"E
28	25.00'	90°00'00"	39.27'	25.00'	35.36'	N61°00'00"E
29	25.00'	90°00'00"	39.27'	25.00'	35.36'	N29°00'00"W
30	25.00'	90°00'00"	39.27'	25.00'	35.36'	N61°00'00"E
31	370.00'	18°00'00"	116.24'	58.60'	115.76'	N07°00'00"E
32	430.00'	07°53'59"	59.29'	29.69'	59.24'	N01°56'59"E
33	430.00'	02°59'14"	22.42'	11.21'	22.42'	N07°23'36"E
34	25.00'	90°00'00"	39.27'	25.00'	35.36'	N36°06'47"W
35	25.00'	90°00'00"	39.27'	25.00'	35.36'	N53°53'13"E
36	1040.00'	09°23'29"	170.47'	85.43'	170.28'	N04°11'29"W

TABB LAKES
SECTION FIVE-A
COUNTY OF YORK, VIRGINIA

THE DeYOUNG - JOHNSON GROUP, INC.
P.O. BOX 197
WILLIAMSBURG, VA. 23187

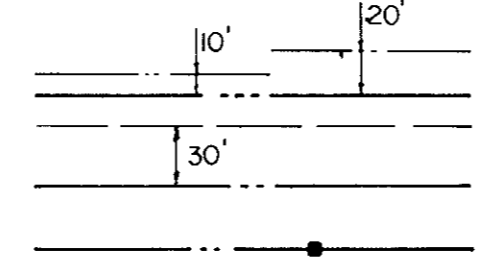
SCALE: 1" = 100'
AUGUST 29, 1988
SHEET 2 OF 2



Line shown thus marks the upland/wetland delineation boundary as established by the United States Army Corps of Engineers. Developer contests the alleged jurisdiction of the United States Army Corps of Engineers to require a permit to fill these wetlands. Developer has filed suit in the United States District Court contesting the United States Army Corps of Engineers alleged jurisdiction. Pending decision by the United States District Court developer will not discharge dredged or fill material into the area delineated as wetlands.

CURVE TABLE - C.L. ROAD

CURVE NUMBER	RADIUS	DELTA	LENGTH	TANGENT	CHORD	CHORD BEARING
A	1070.00'	09°23'29"	175.38'	87.89'	175.19'	S04°11'29"W
B	400.00'	10°53'13"	76.01'	38.12'	75.89'	S03°26'37"W
C	400.00'	18°00'00"	125.66'	63.35'	125.15'	S07°00'00"W
D	225.00'	66°15'00"	260.16'	146.82'	245.91'	N72°52'30"E



LEGEND
EASEMENTS SHOWN THIS ARE HEREBY CONVEYED TO THE COUNTY OF YORK FOR DRAINAGE & UTILITIES
MINIMUM BUILDING SETBACK LINE SHOWN THUS
CONCRETE MONUMENTS SHOWN THUS

AREA WITHIN LOTS = 599,511.51 S.F. / 13.76 AC.
AREA WITHIN R/W = 175,076.65 S.F. / 4.02 AC.
AREA WITHIN OPEN SPACE = 143,922.89 S.F. / 3.30 AC.
TOTAL SUBDIVIDED AREA = 918,511.05 S.F. / 21.08 AC.

AREA OF LOTS ALLEGED TO HAVE WETLANDS SHOWN THUS

APPROVED
YORK COUNTY BOARD OF SUPERVISORS

BY: *Paul M. Smith*
PLAT APPROVING AGENT
DATE: *October 31, 1988*

STATE OF VIRGINIA
COUNTY OF YORK
IN THE CLERK'S OFFICE OF THE CIRCUIT COURT FOR THE COUNTY OF YORK THE 31ST DAY OF Oct, 1988. THIS MAP WAS PRESENTED & ADMITTED TO RECORD AS THE LAW DIRECTS IN PLAT BOOK 60, PAGE 605.
BY: *James S. DeYoung*
CLERK