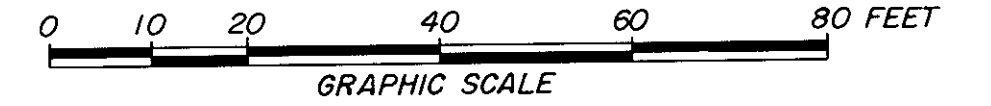


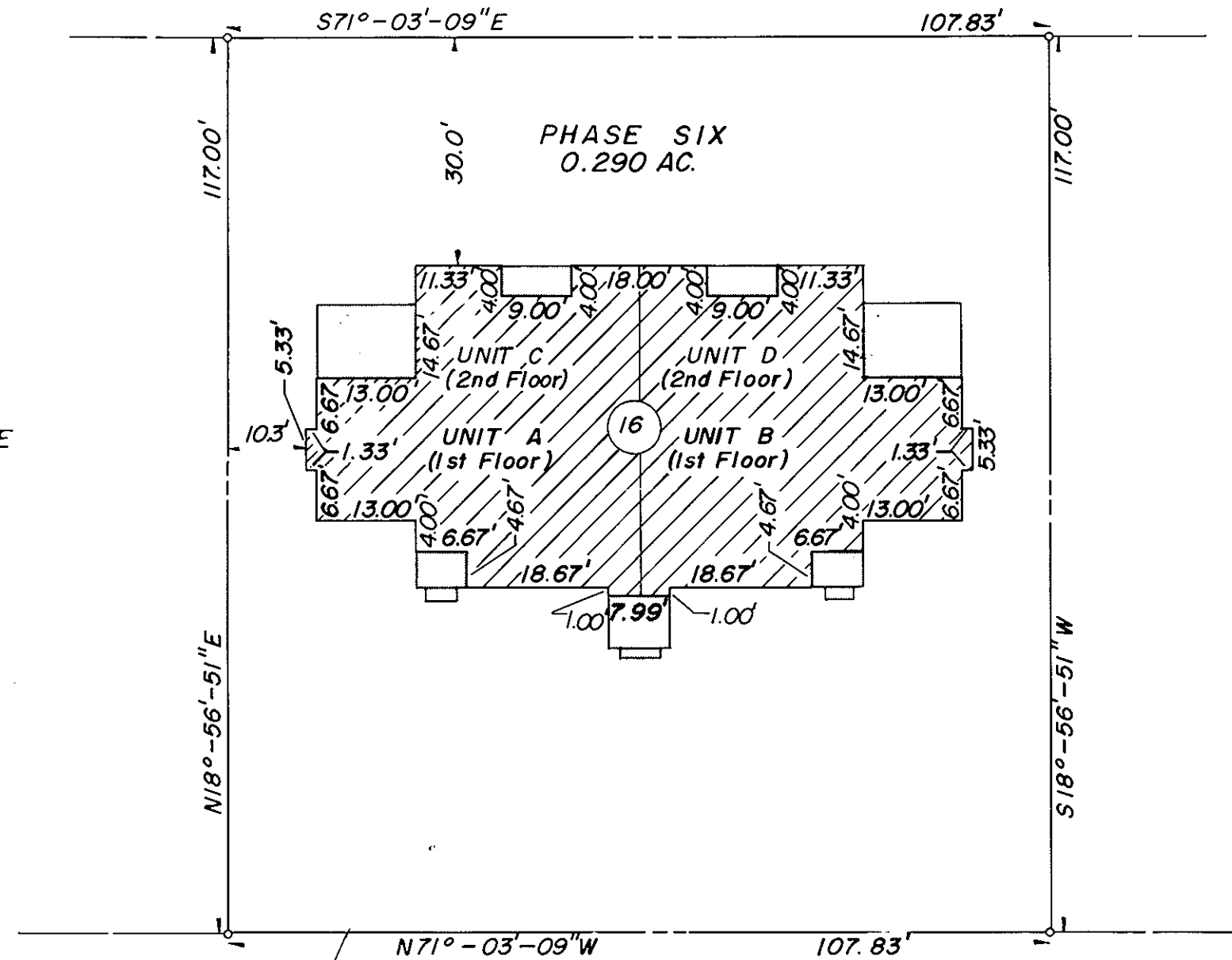
SHEET 2 OF 2
BURNT BRIDGE RUN CONDOMINIUM
 PHASE SIX
 GRAFTON DISTRICT COUNTY OF YORK, VIRGINIA
 SCALE 1" = 20' NOVEMBER 1, 1988



THE SIRINE GROUP, LTD.
 SURVEYORS • ENGINEERS • PLANNERS
 P.O. BOX 450, ROUTE 17
 WHITE MARSH, VIRGINIA
 23183

NOW OR FORMERLY
MARY HARRIS ESTATE

PHASE FIVE



PHASE SEVEN

NOTES:

1. ALL BUILDING DIMENSIONS SHOWN HEREON ARE EXTERIOR DIMENSIONS AND ARE IN FEET.
2. THE DESIGNATION OF FEE TITLE AREA IS SUPERSEDED BY THE DECLARATION AND IS NOT INTENDED TO IMPLY THAT EXTERIOR WALLS, BEARING WALLS AND OTHER COMMON ELEMENTS ARE FEE TITLE AREA.
3. I CERTIFY THAT THIS PLAT COMPLIES WITH THE PROVISIONS OF SUBSECTION (a) OF §55-79.58 OF THE CONDOMINIUM ACT AND THAT AND THAT ALL UNITS^S DEPICTED HEREON HAVE BEEN SUBSTANTIALLY COMPLETED.

SIGNED: C. E. Newbaker III
 C. E. NEWBAKER III



LEGEND

- FEE TITLE AREA
- COMMON ELEMENTS
- LIMITED COMMON ELEMENTS
- LIMIT OF AREA OR ELEMENTS

THE PROPERTY AS DEPICTED ON THIS PLAT DOES NOT VIOLATE THE PROVISIONS OF THE YORK COUNTY SUBDIVISION ORDINANCE

SIGNED: J. Mark Carter
 TITLE: DIR. OF PLANNING & COM. DEV.
 DATE: November 8, 1988