

RUNNING MAN SECTION THREE-B
(P.B. 10, P.302-303)

NOW OR FORMERLY
PAUL K. LOTZ, ET UX
(D.B. 392, P. 657)
(D.B. 295, P. 477)

AREAS TO REVERT TO ADJOINING
PROPERTY OWNERS IF AND WHEN
STREET IS EXTENDED (SEE DETAIL
THIS SHEET)

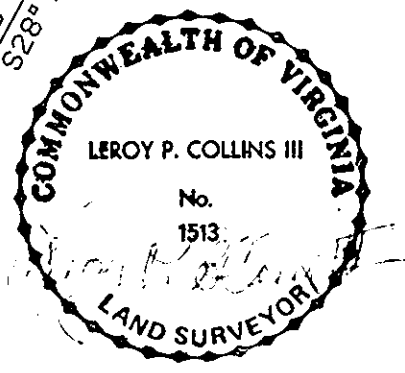
NOW OR FORMERLY
E.A. & T.R. SINCLAIR ESTATE
(D.B. 36, P. 20)
(D.B. 20, P. 124-129)
(D.B. 295, P. 680)
(W.B. 36, P. 390)

EXISTING
15' DRAINAGE
& UTILITY EASEMENT
(P.B. 10, P. 302-303)

EXIST. 76
10' DRAINAGE &
UTILITY EASEMENT
(P.B. 10, P. 302-303)

EXISTING
10' DRAINAGE &
UTILITY EASEMENT
(P.B.10, P.302-
303)

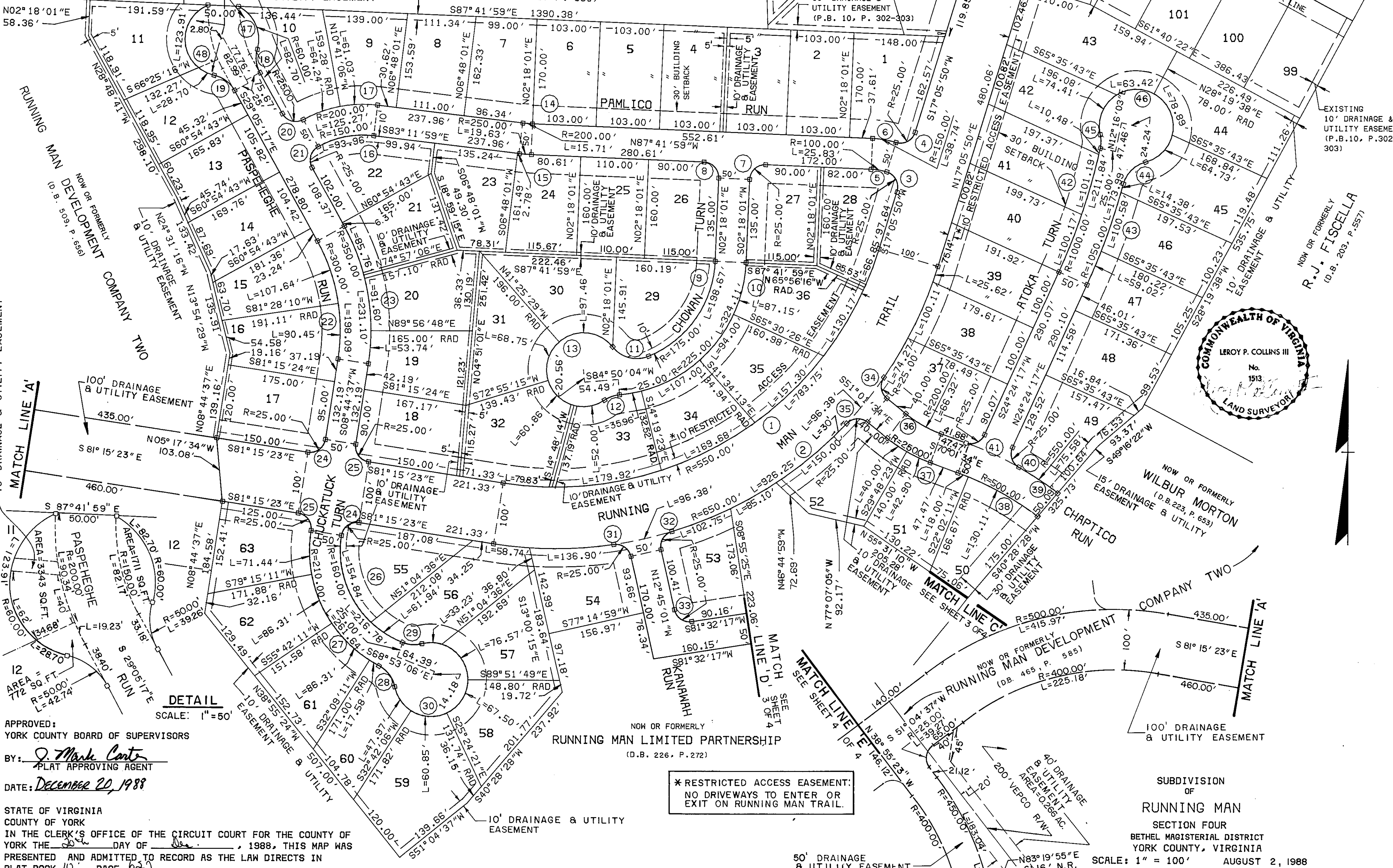
NOW OR FORMERLY
R.J. FISCELLA
(D.B. 203, P. 557)



NOW OR FORMERLY
WILBUR MORTON
(D.B. 223, P. 653)

NOW OR FORMERLY
RUNNING MAN DEVELOPMENT
(D.B. 465, P. 585)

NOW OR FORMERLY
RUNNING MAN LIMITED PARTNERSHIP
(D.B. 226, P. 272)



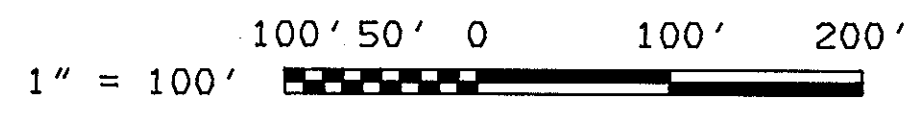
APPROVED:
YORK COUNTY BOARD OF SUPERVISORS
BY: *J. Mark Carter*
PLAT APPROVING AGENT
DATE: *December 20, 1988*

STATE OF VIRGINIA
COUNTY OF YORK
IN THE CLERK'S OFFICE OF THE CIRCUIT COURT FOR THE COUNTY OF
YORK THE *20th* DAY OF *Dec*, 1988, THIS MAP WAS
PRESENTED AND ADMITTED TO RECORD AS THE LAW DIRECTS IN
PLAT BOOK *10*, PAGE *627*

TESTE: *Edith M. Elliott*, CLERK
BY: *James S. Denny*

* RESTRICTED ACCESS EASEMENT:
NO DRIVEWAYS TO ENTER OR
EXIT ON RUNNING MAN TRAIL.

SEE SHEET 1 FOR LOT AREAS, CURVE DATA, NOTES AND CERTIFICATIONS



SUBDIVISION
OF
RUNNING MAN
SECTION FOUR
BETHEL MAGISTERIAL DISTRICT
YORK COUNTY, VIRGINIA
SCALE: 1" = 100'
AUGUST 2, 1988

