

THE UNDERSIGNED CERTIFIES THAT THIS PLAN IS ACCURATE AND COMPLIES WITH THE PROVISIONS OF THE CODE OF VIRGINIA SECTION 55-79.58 (b) AND ALL UNITS DEPICTED HEREON HAVE BEEN SUBSTANTIALLY COMPLETED.

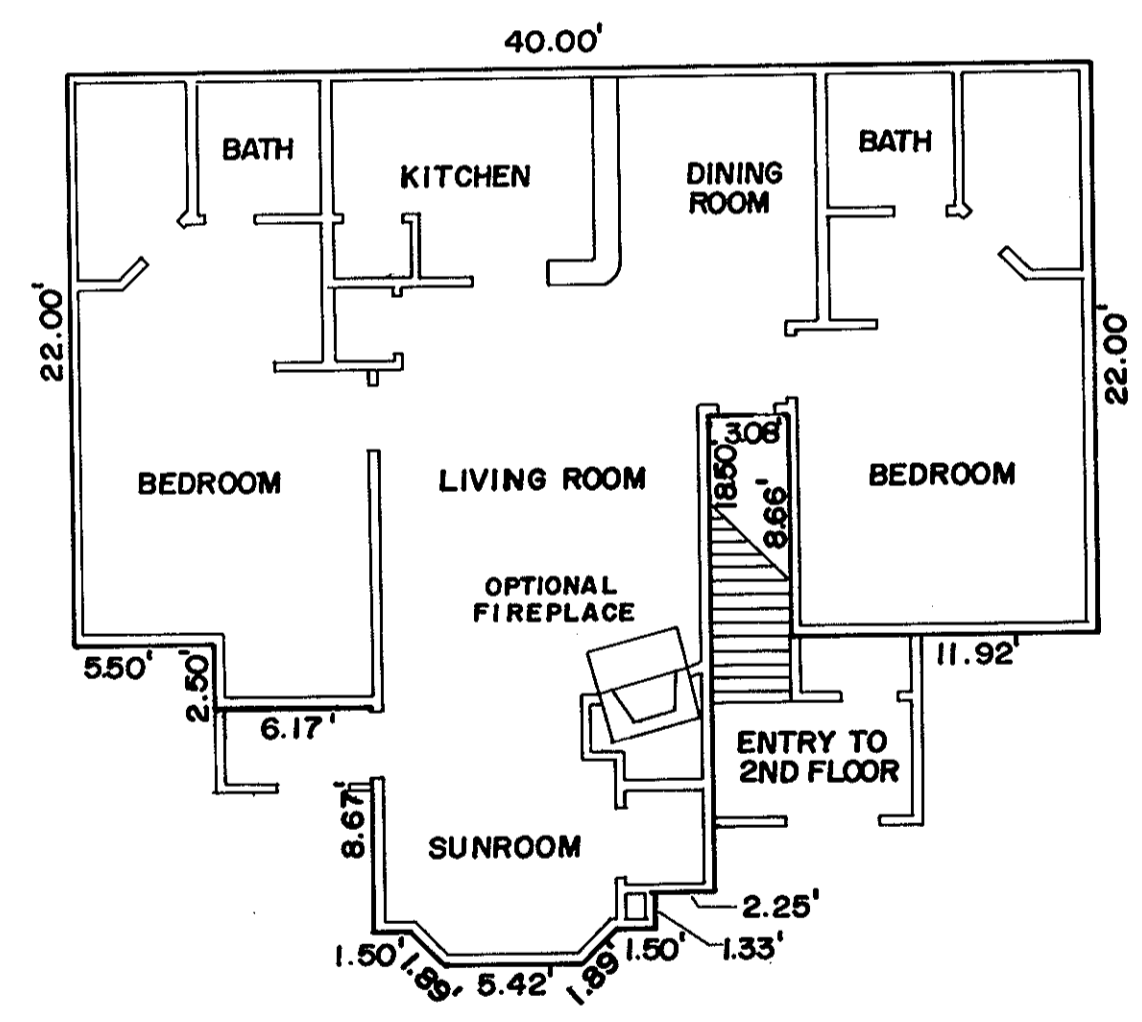
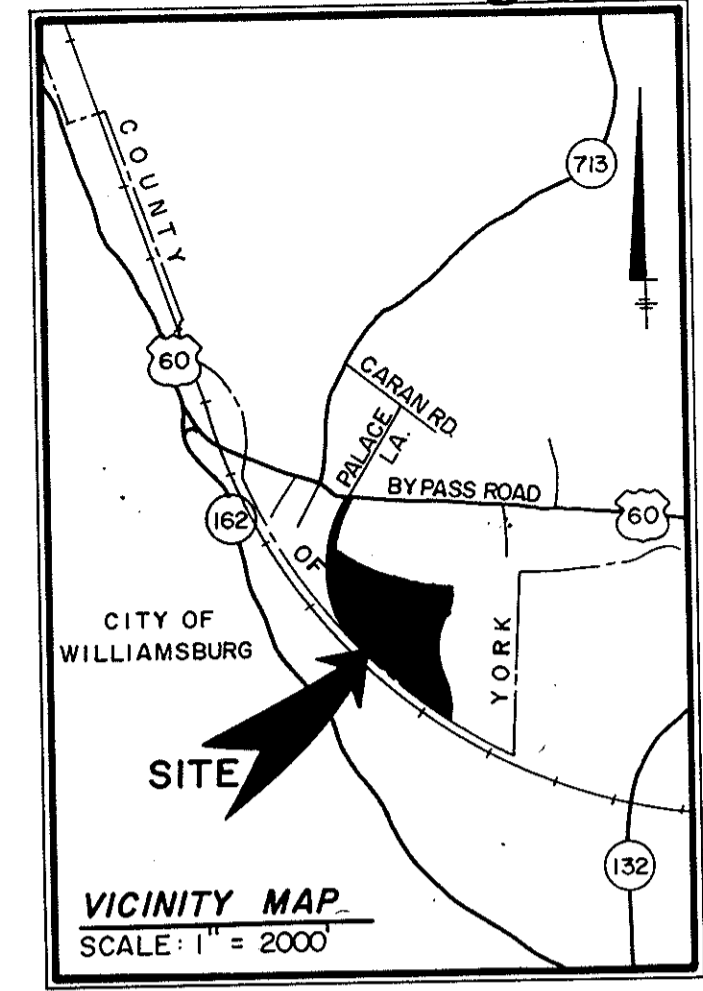
NOTES
1. ALL BUILDING DIMENSIONS SHOWN HEREON ARE EXTERIOR DIMENSIONS AND ARE IN FEET.

STATE OF VIRGINIA
COUNTY OF YORK

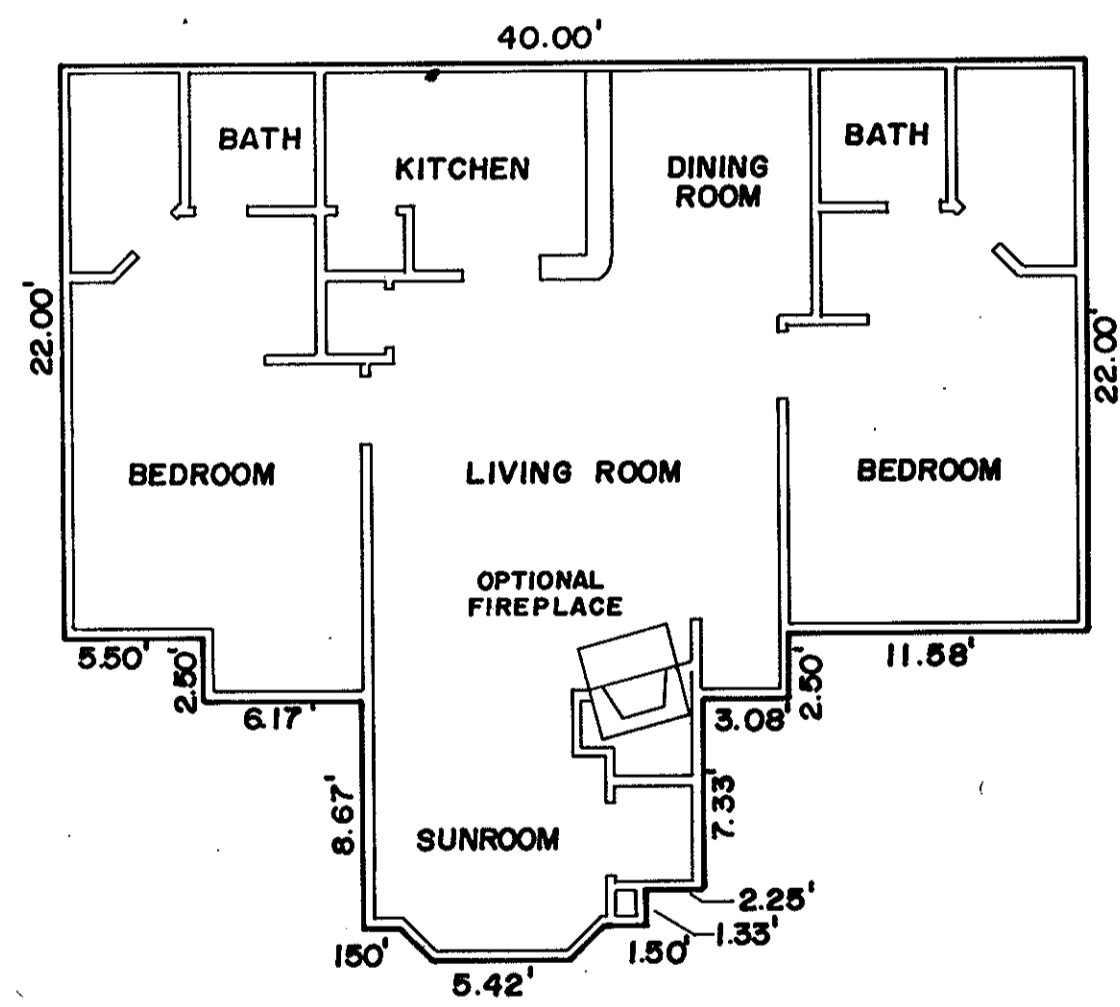
IN THE CLERK'S OFFICE OF THE CIRCUIT COURT FOR THE COUNTY OF YORK THE 27th DAY OF Dec, 1988 THIS MAP WAS PRESENTED AND ADMITTED TO RECORD AS THE LAW DIRECTS IN PLAT BOOK 10, PAGE 632.

SIGNED: Kenton B. Patrick DATE: 11/24/88
KENTON B. PATRICK, P.E.

TESTE: EDITH M. ELLIOTT, CLERK
CLERK
BY: Cecil Prosser, D.C. 4:24 P.M.



MODEL D - TYPICAL UNITS A, B, C, D, E & F
1ST FLOOR
W / SUNROOM



MODEL D - TYPICAL UNITS G, H, I, J, K & L
2ND FLOOR
W / SUNROOM

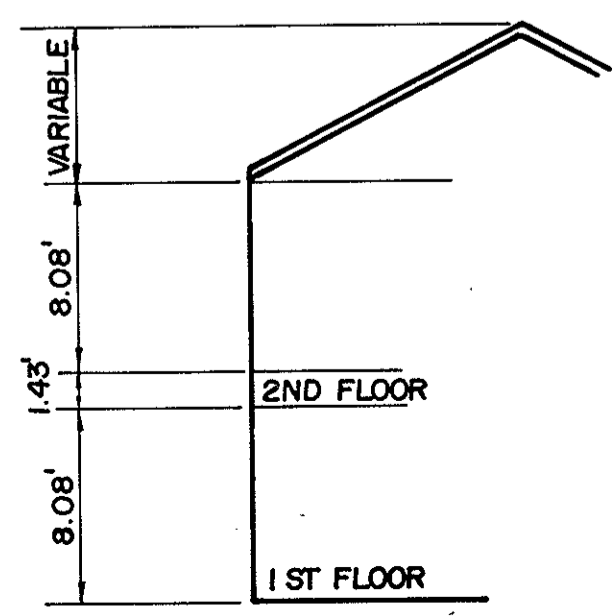


EXHIBIT G
PHASE VI
SHEET 2 OF 4
PLAT OF
WILLIAMSBURG COMMONS CONDOMINIUMS
FOR
WILLIAMSBURG COMMONS, INC.,
A VIRGINIA CORPORATION
BRUTON DISTRICT COUNTY OF YORK, VIRGINIA
SCALE: 1/8" = 1'-0" NOVEMBER 16, 1988



THE SIRINE GROUP, LTD.
SURVEYORS • ENGINEERS • PLANNERS
P.O. BOX 450, ROUTE 17
WHITE MARSH, VIRGINIA
23183