

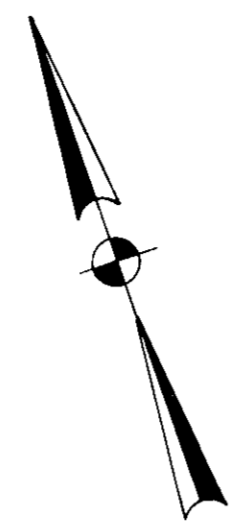
THIS PLAT IS AN EXHIBIT TO THE DECLARATION OF YORKSHIRE DOWNS CONDOMINIUM, DATED MARCH 1, 1988 AND RECORDED IN DEED BOOK _____, PAGE _____.

YORKSHIRE DOWNS
CONDOMINIUM
PHASE II
LOCATED IN
YORK COUNTY, VIRGINIA

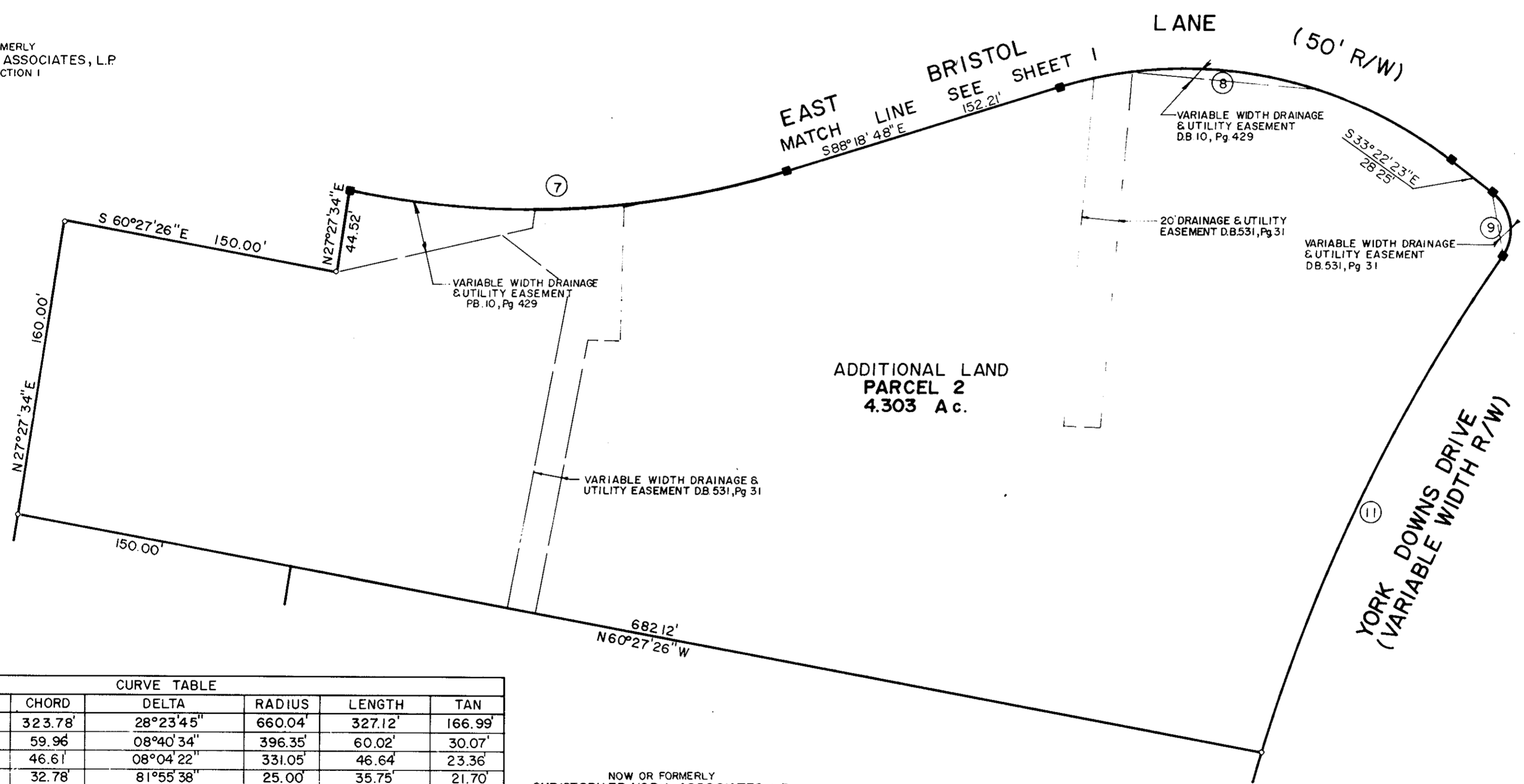


Talbot & Associates, Ltd.
Architects, Engineers, Planners, Surveyors, Landscape Architects
100 Landmark Square, Virginia Beach, Va. 23452
739 Thimble Shoals Blvd., Suite 1006, Newport News, Va. 23606

SCALE: 1" = 50' SHEET 2 OF 3 DECEMBER 29, 1988



NOW OR FORMERLY
CHRISTOPHER YORK ASSOCIATES, L.P.
PHASE I, SECTION I

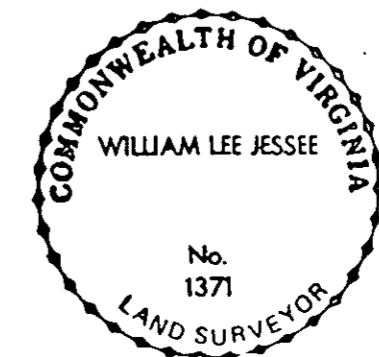


CURVE TABLE						
NO.	CH. BEARING	CHORD	DELTA	RADIUS	LENGTH	TAN
C01	S 21° 22' 45" W	323.78'	28° 23' 45"	660.04'	327.12'	166.99'
C02	S 68° 49' 48" W	59.96'	08° 40' 34"	396.35'	60.02'	30.07'
C03	S 60° 39' 48" W	46.61'	08° 04' 22"	331.05'	46.64'	23.36'
C04	S 74° 20' 12" E	32.78'	81° 55' 38"	25.00'	35.75'	21.70'
C05	S 60° 50' 35" E	262.37'	54° 56' 24"	284.39'	272.70'	147.86'
C06	S 76° 59' 37" E	164.88'	22° 38' 22"	420.00'	165.96'	84.07'
C07	S 73° 45' 06" E	236.33'	29° 07' 23"	470.00'	238.90'	122.09'
C08	S 60° 50' 35" E	216.24'	54° 56' 24"	234.39'	224.76'	121.86'
C09	S 10° 09' 49" W	34.44'	87° 04' 25"	25.00'	37.99'	23.75'
C10	S 55° 09' 49" W	48.74'	02° 55' 35"	954.40'	48.75'	24.38'
C11	S 44° 46' 08" W	296.36'	17° 51' 49"	954.40'	297.56'	150.00'
C12	S 01° 39' 19" E	32.50'	15° 14' 07"	122.60'	32.60'	16.39'
C13	S 68° 56' 02" W	48.89'	08° 28' 06"	331.05'	48.93'	24.51'

NOW OR FORMERLY
CHRISTOPHER YORK ASSOCIATES, L.P.
PARCEL 'C'

I WILLIAM LEE JESSEE, A DULY REGISTERED SURVEYOR DO HEREBY CERTIFY THAT THIS DRAWING IS ACCURATE (WITHIN NORMAL TOLERANCES) AND COMPLIES WITH SECTION 55-79.58(a) OF THE CONDOMINIUM ACT AND THAT THE UNITS SHOWN HEREON ARE SUBSTANTIALLY COMPLETED IN ACCORDANCE HEREWITH.

William Lee Jesse, DATE 10-24-88



Deed Book No. 11 Page 4A

Filed in the Clerk's Office of the Circuit Court, York Co., VA
the 5th day of January 1989
Edith M. Elliott, Clerk
Carol Dasselmeier D.C.