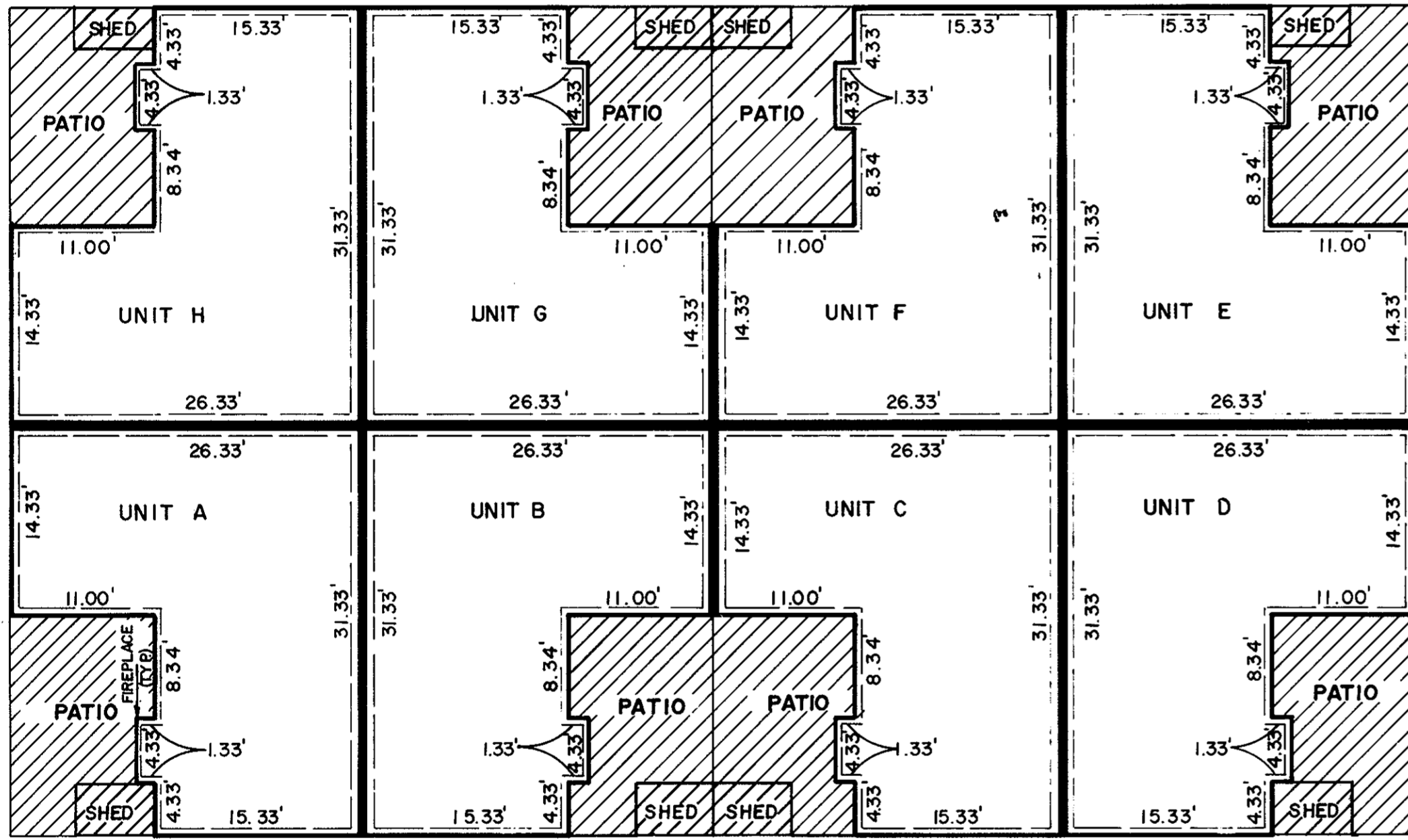


YORKSHIRE DOWNS CONDOMINIUM UNIT DIMENSION PLAN



SCALE: AS SHOWN

SHEET 3 OF 3



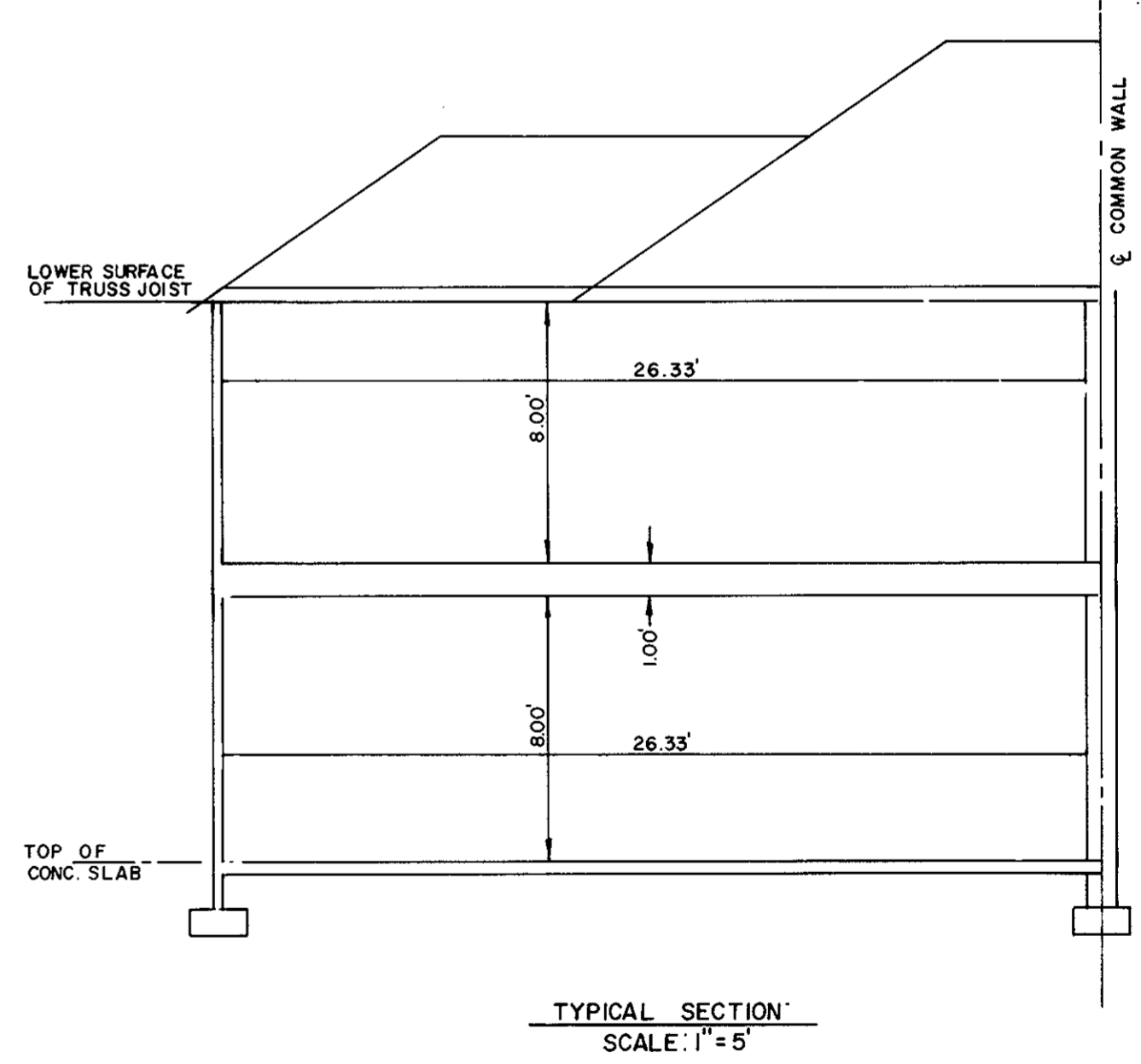
TYPICAL UNIT PLAN

SCALE: 1" = 10'

NOTE:
ALL UNITS ARE SAME UNIT TYPE
AND DIMENSIONS.

 LIMITED COMMON ELEMENT

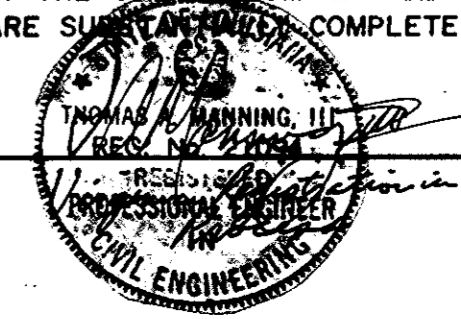
NOTE:
SECTIONAL VIEWS OF UNITS AND ALL UNIT DIMENSIONS WERE OBTAINED FROM THE ARCHITECTURAL PLANS OF RICHARD LEE GRIMSTEAD, A REGISTERED ARCHITECT WITH THE COMMONWEALTH OF VIRGINIA.



TYPICAL SECTION

SCALE: 1" = 5'

I, THOMAS A. MANNING, III, A DULY REGISTERED ENGINEER, DO HEREBY CERTIFY THAT THIS DRAWING IS ACCURATE (WITHIN NORMAL TOLERANCES) AND COMPLIES WITH SECTION 55-79.58(b) OF THE CONDOMINIUM ACT AND THAT THE UNITS SHOWN HEREON ARE SUBSTANTIALLY COMPLETED IN ACCORDANCE HEREWITH.



DATE 1/13/89

Plot Book No. 11 Page 6
Filed in the Clerk's Office, Circuit Court, York Co., VA. the 13th day of January 1989
Teste: Edith M. Elliott, Clerk
Ramon D. Williams, D.C.

PROJECT NO: 872217
FILE NO: 872217