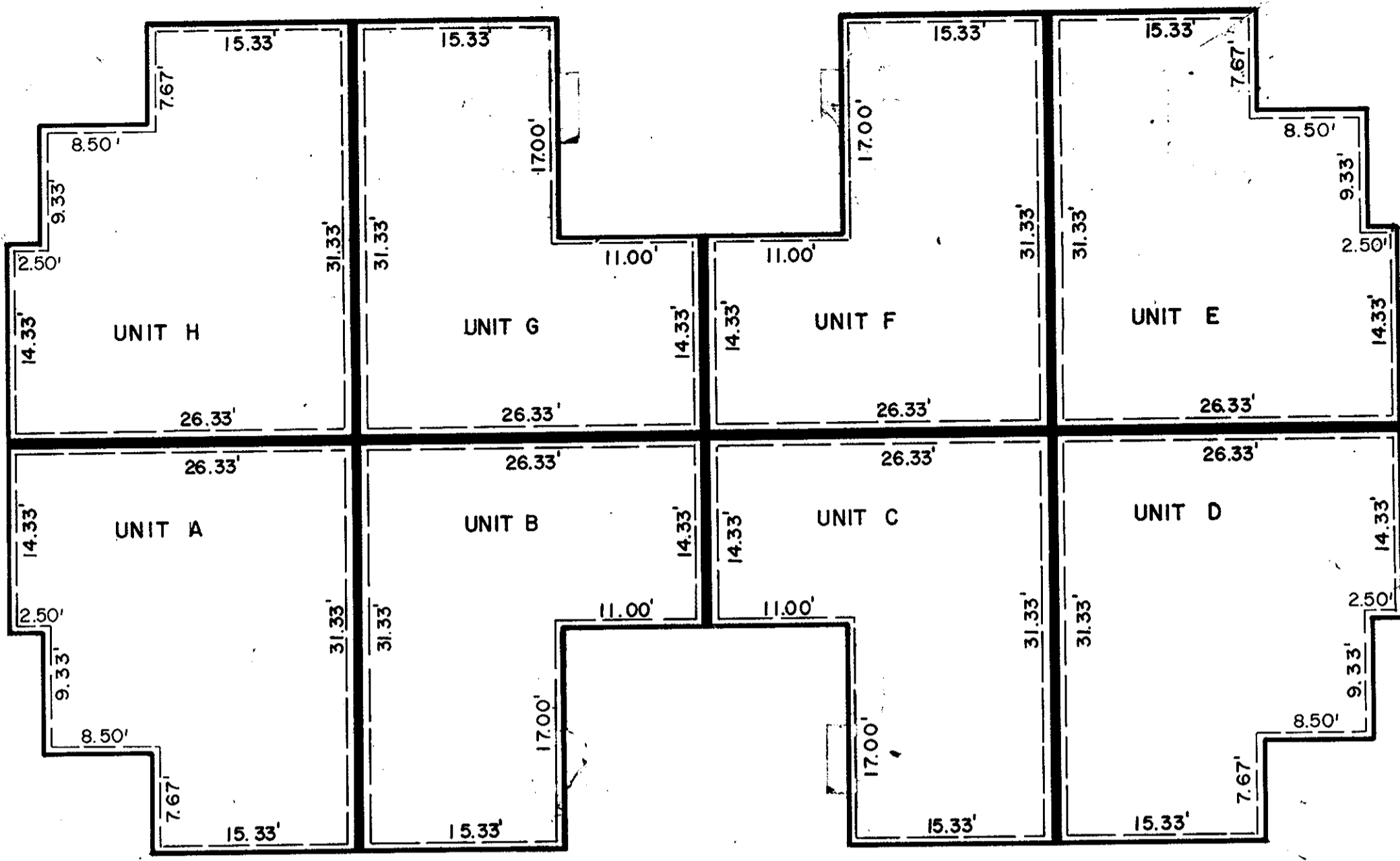


**YORKSHIRE DOWNS
CONDOMINIUM
UNIT DIMENSION PLAN
PHASE IX**



SCALE: AS SHOWN

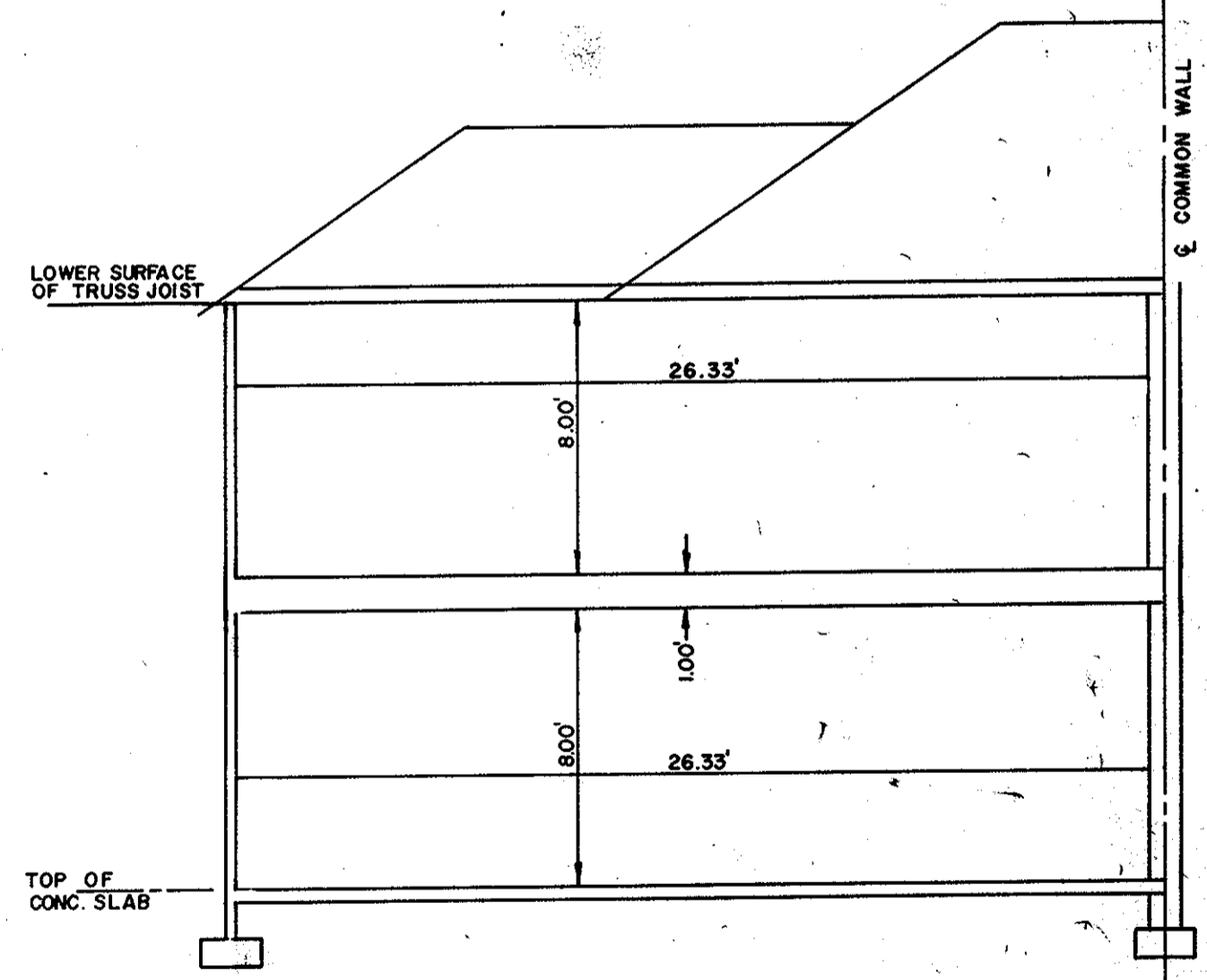
SHEET 3 OF 3



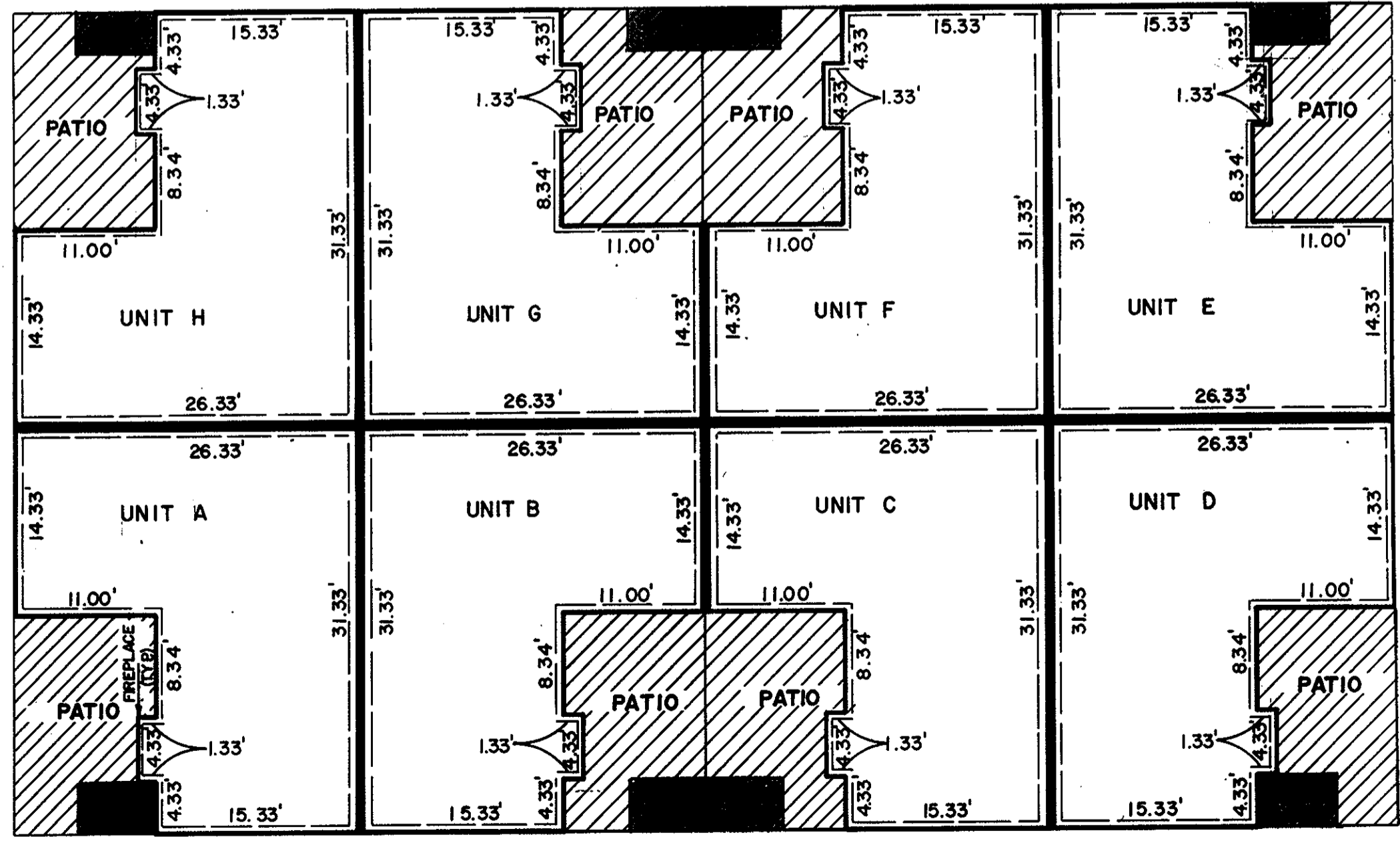
SECOND FLOOR PLAN
1" = 10'



NOTE:
SECTIONAL VIEWS OF UNITS AND ALL UNIT DIMENSIONS WERE OBTAINED FROM THE ARCHITECTURAL PLANS OF RICHARD LEE GRIMSTEAD, A REGISTERED ARCHITECT WITH THE COMMONWEALTH OF VIRGINIA.



TYPICAL SECTION
SCALE: 1" = 5'



FIRST FLOOR PLAN
1" = 10'

I, T. A. MANNING, III, A DULY REGISTERED ENGINEER, DO HEREBY CERTIFY THAT THIS DRAWING IS ACCURATE (WITHIN NORMAL TOLERANCES) AND COMPLIES WITH SECTION 55-79.58(b) OF THE CONDOMINIUM ACT AND THAT THE UNITS SHOWN HEREON ARE SUBSTANTIALLY COMPLETED IN ACCORDANCE HERewith.

T. A. Manning, III, DATE 9 November 1989

NANCY B. KANE, CLERK PROJECT NO: 872217 FILE NO: 872217

Filed in the Clerk's Office, Circuit Court, York Co., Va. on 20th day of November, 1989

Teste: Nancy B. Kane, Clerk
Carol Crossman DC, 9:28 A.M.