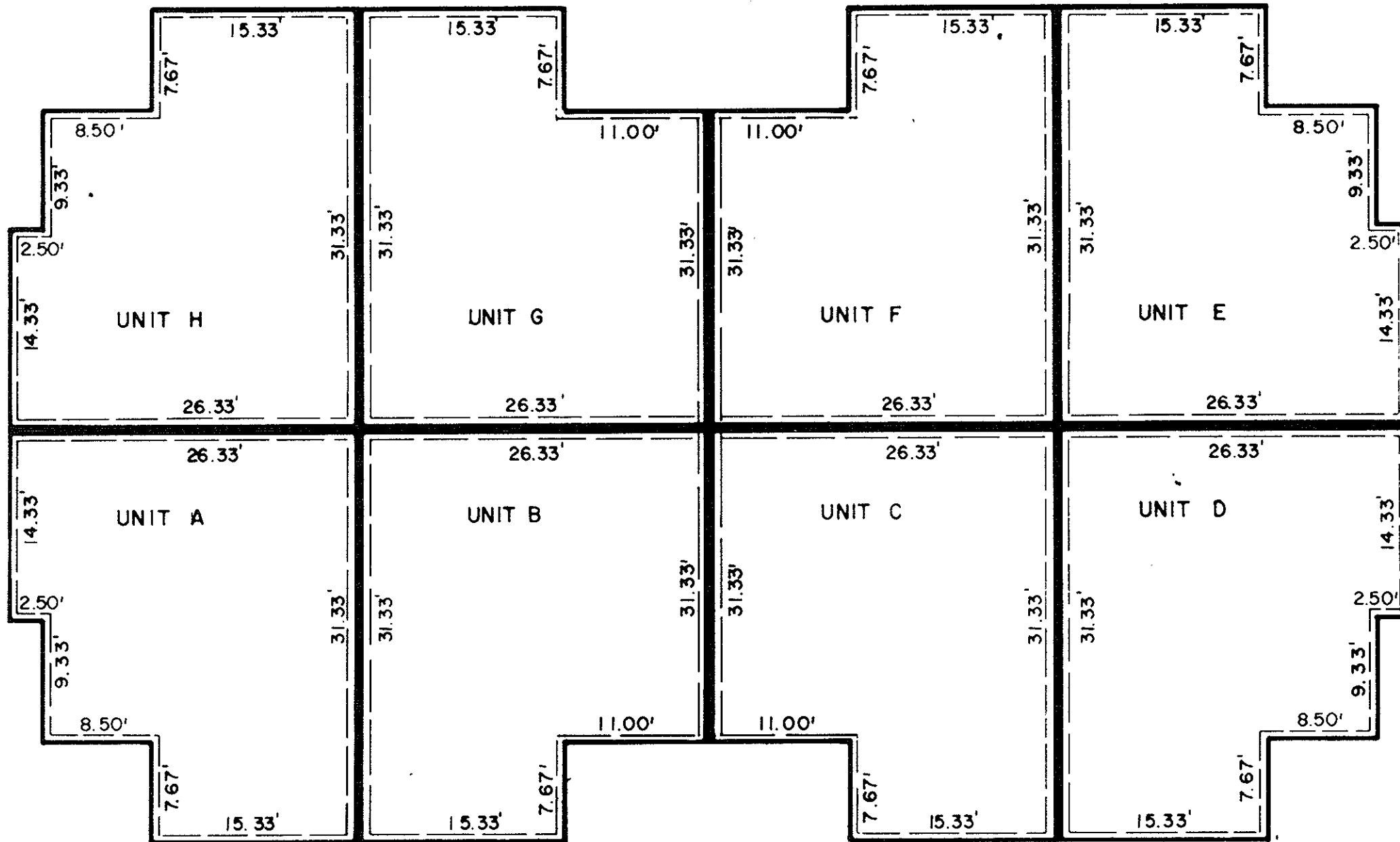


YORKSHIRE DOWNS  
CONDOMINIUM  
UNIT DIMENSION PLAN  
PHASE XI



SCALE: AS SHOWN

SHEET 3 OF 3

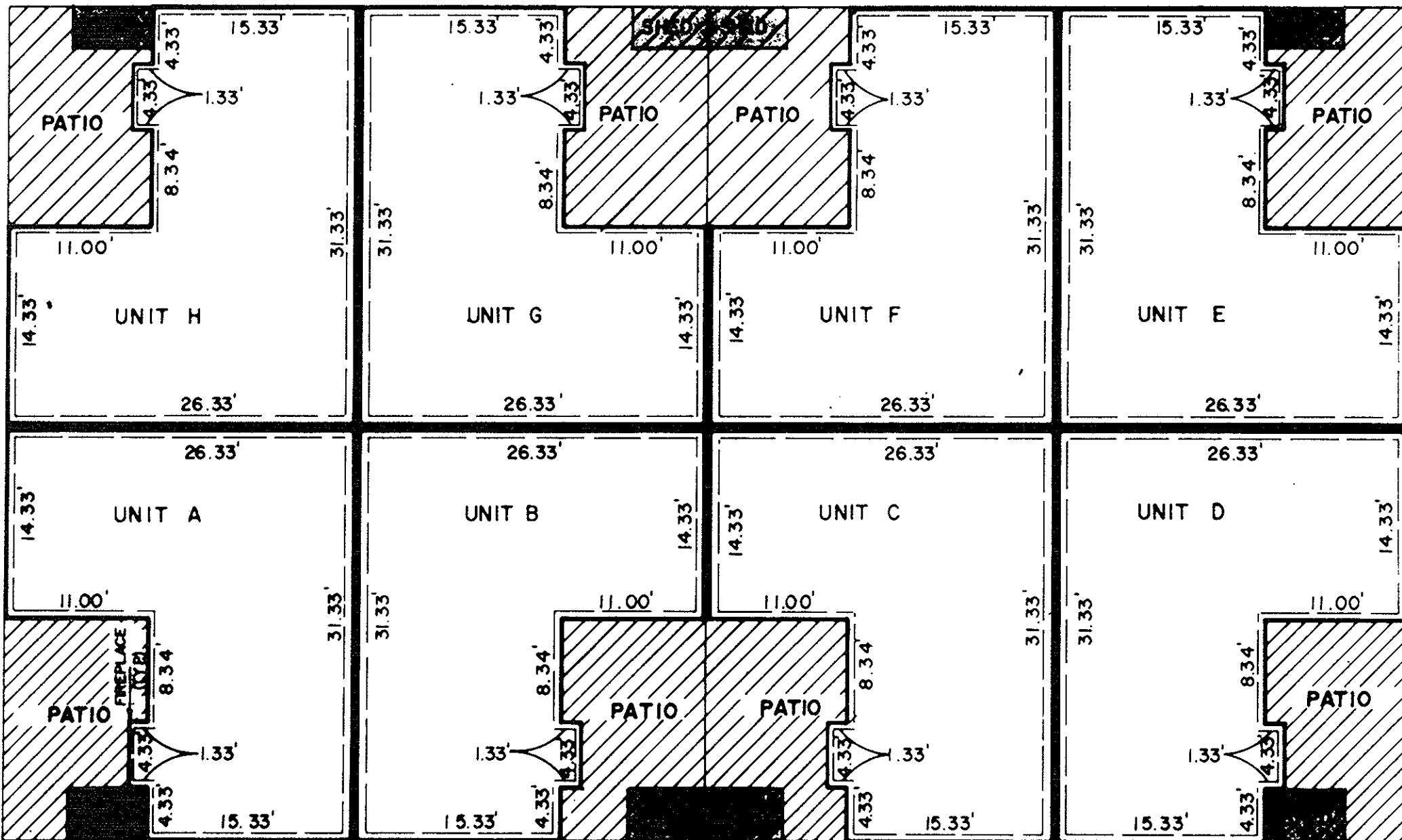


SECOND FLOOR PLAN

1" = 10'

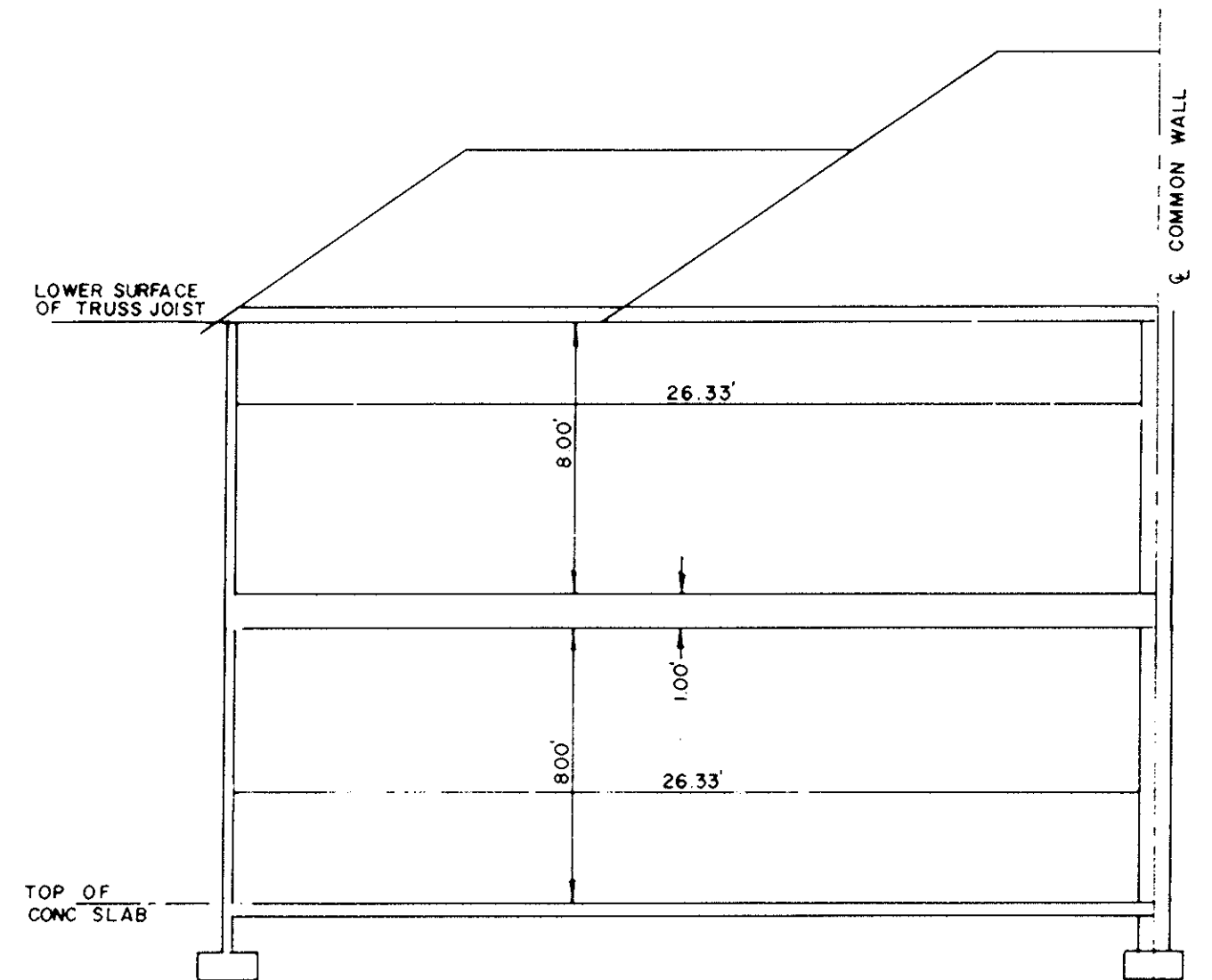


NOTE:  
SECTIONAL VIEWS OF UNITS AND ALL UNIT DIMENSIONS WERE OBTAINED FROM THE ARCHITECTURAL PLANS OF RICHARD LEE GRIMSTEAD, A REGISTERED ARCHITECT WITH THE COMMONWEALTH OF VIRGINIA.



FIRST FLOOR PLAN

1" = 10'



TYPICAL SECTION  
SCALE: 1" = 5'

I, G. WALLACE McCULLOCH, A DULY REGISTERED ENGINEER, DO HEREBY CERTIFY THAT THIS DRAWING IS ACCURATE (WITHIN NORMAL TOLERANCES) AND COMPLIES WITH SECTION 55-79.58(b) OF THE CONDOMINIUM ACT AND THAT THE UNITS SHOWN HEREON ARE SUBSTANTIALLY COMPLETED IN ACCORDANCE HEREWITH.

*G. Wallace McCulloch*, DATE 2-13-90

1449 February 90  
10:42 am.  
*Kenneth D. Kelly*

PROJECT NO: 872217  
FILE NO: 872217