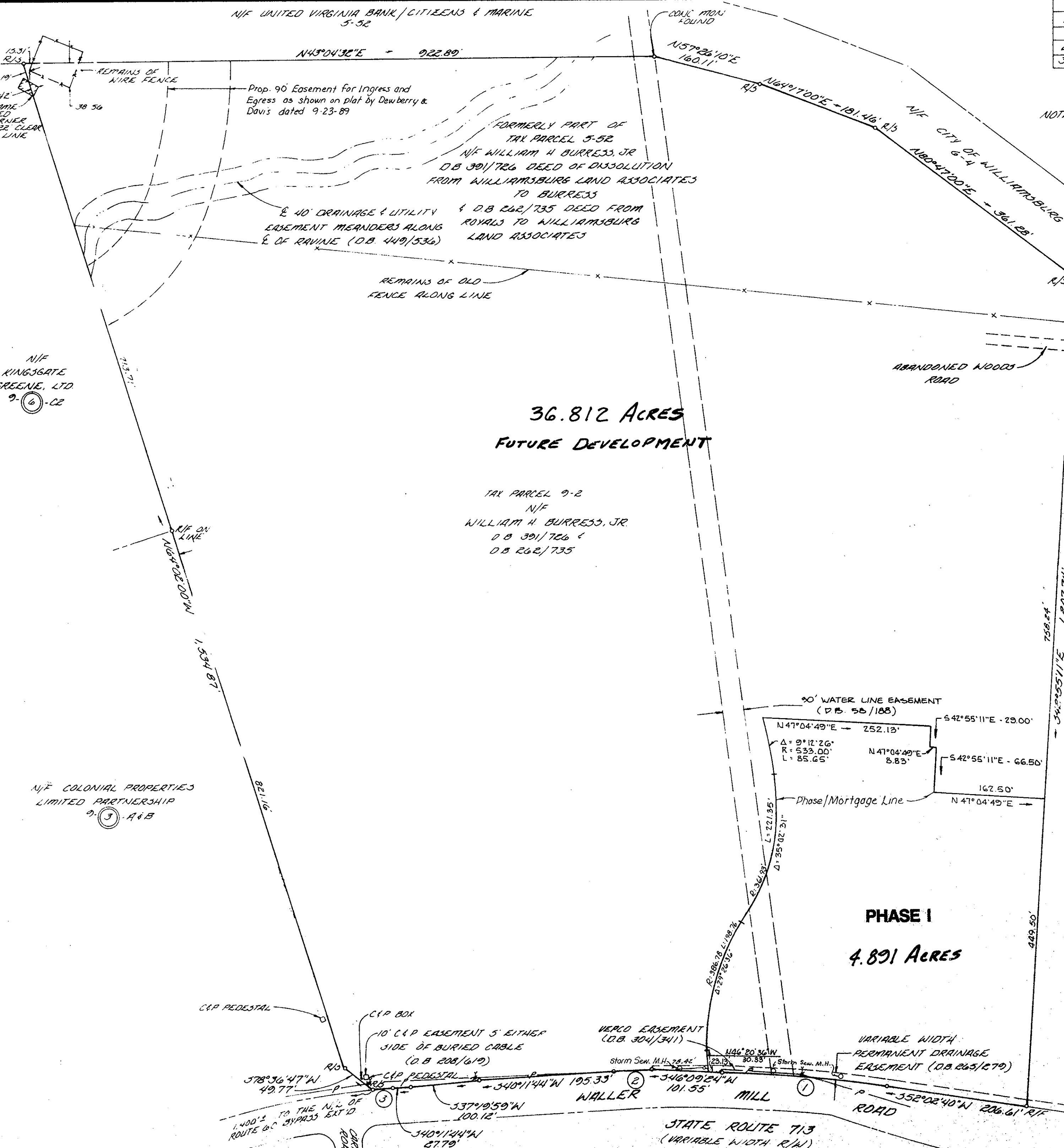
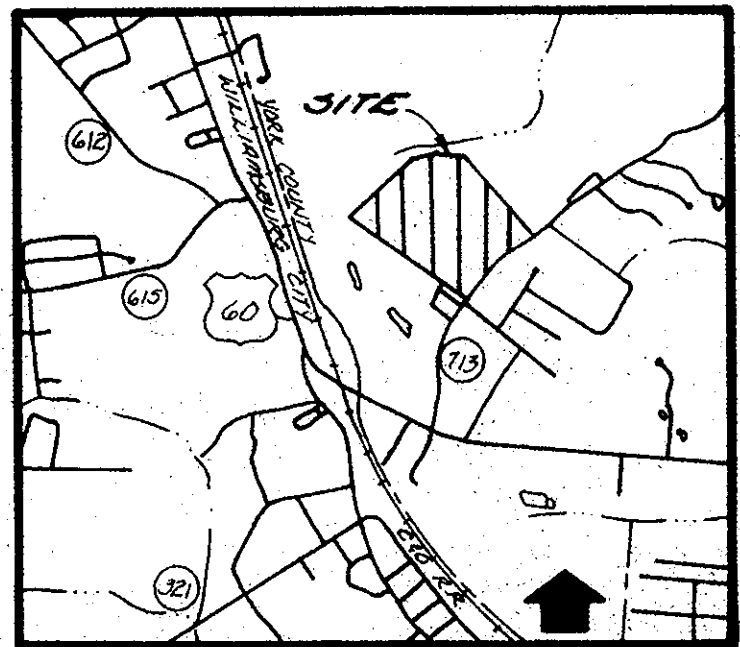
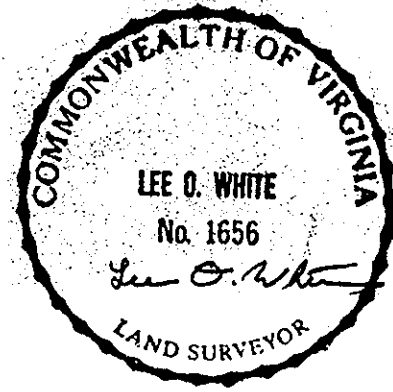


| CURVE DATA |         |           |          |         |             |         |
|------------|---------|-----------|----------|---------|-------------|---------|
| NO.        | ARC     | RADIUS    | DELTA    | TAN     | BEARING     | CHORD   |
| 1          | 243.48' | 1,034.86' | 7°12'36" | 121.90' | 348°26'26"W | 243.32' |
| 2          | 55.53'  | 1,939.86' | 1°38'24" | 27.77'  | 341°00'56"W | 55.53'  |
| 3          | 30.97'  | 1,170.92' | 1°30'57" | 15.49'  | 339°26'16"W | 30.97'  |

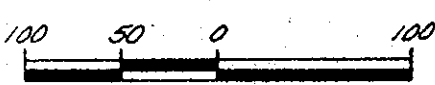
NOTE THE PROPERTY HEREON IS NOT LOCATED WITHIN A HUD DEFINED FLOOD HAZARD ZONE.



Plat Book No. 11 Page 187  
 Filed in the Clerk's Office, Circuit Court, York Co., Va. the 21<sup>st</sup> day of March 1990  
 Teste: Nancy B. Kane, Clerk  
Raven D. Watkins D.C.



PLAT SHOWING  
 MORTGAGE LINE FOR PHASE I OF  
 KINGSGATE TIME-SHARE PROJECT  
 BRUTON DISTRICT, YORK COUNTY, VIRGINIA  
 SCALE: 1" = 100' JAN. 23, 1990



**Dewberry & Davis**

Engineers  
 Architects  
 Planners  
 Surveyors

2701 Emerywood Parkway, Suite 106  
 Richmond, Virginia 23229 Tel. No. (804) 672-0452

Rev. 3-14-90-Removed egress/ingress esmt, const. esmt. & barn