

THE UNDERSIGNED CERTIFIES THAT THIS PLAT IS ACCURATE AND COMPLIES WITH THE PROVISIONS OF THE CODE OF VIRGINIA SECTION 55-79.58 (a) AND ALL UNITS DEPICTED HEREON HAVE BEEN SUBSTANTIALLY COMPLETED.

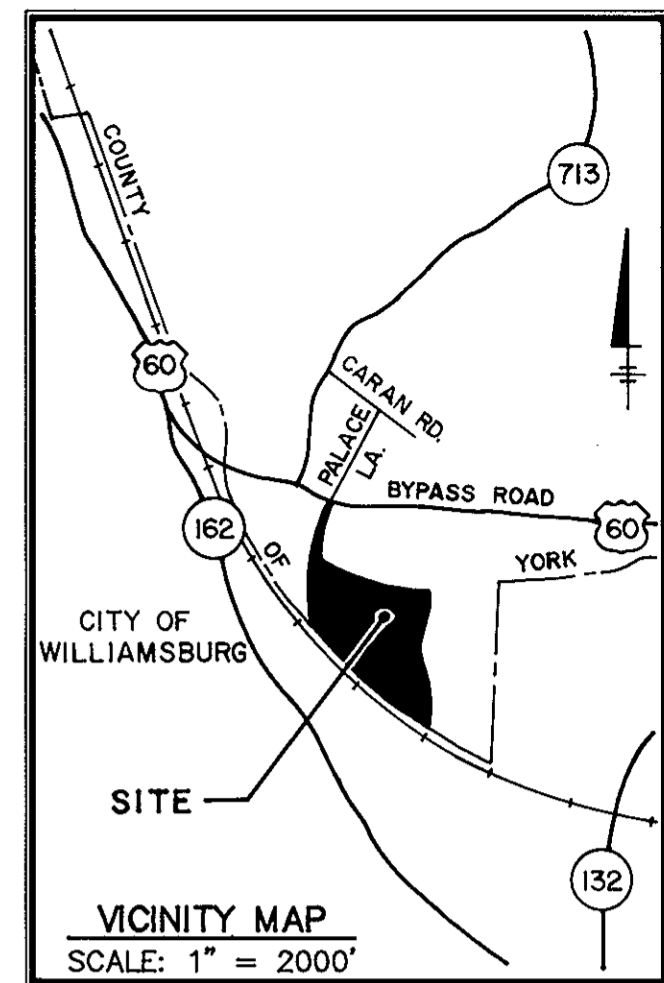
SIGNED: *C.E. Newbaker III* DATE: 1-7-91
 C.E. NEWBAKER III, L.S. 1380



STATE OF VIRGINIA
 COUNTY OF YORK

IN THE CLERK'S OFFICE OF THE CIRCUIT COURT FOR THE COUNTY OF YORK THE 13th DAY OF JANUARY, 1991, THIS PLAT WAS PRESENTED AND ADMITTED TO RECORD AS THE LAW DIRECTS IN PLAT BOOK 11, PAGE 275.

TESTE: *Nancy B. Kane*, CLERK
 BY: *Kenneth D. Kowalick*

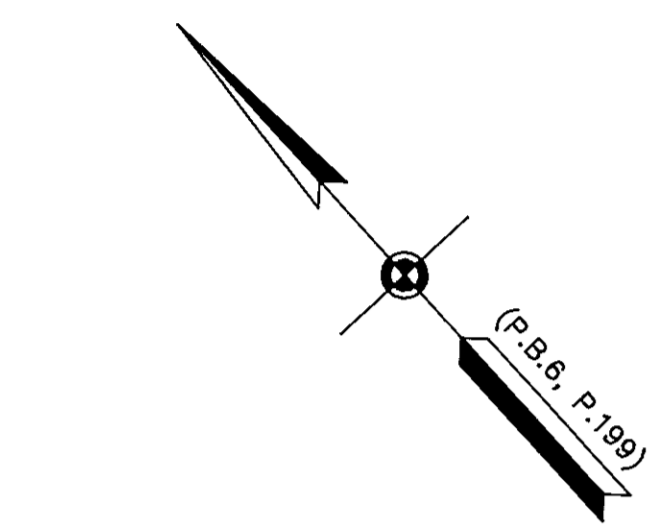


CURVE TABLE

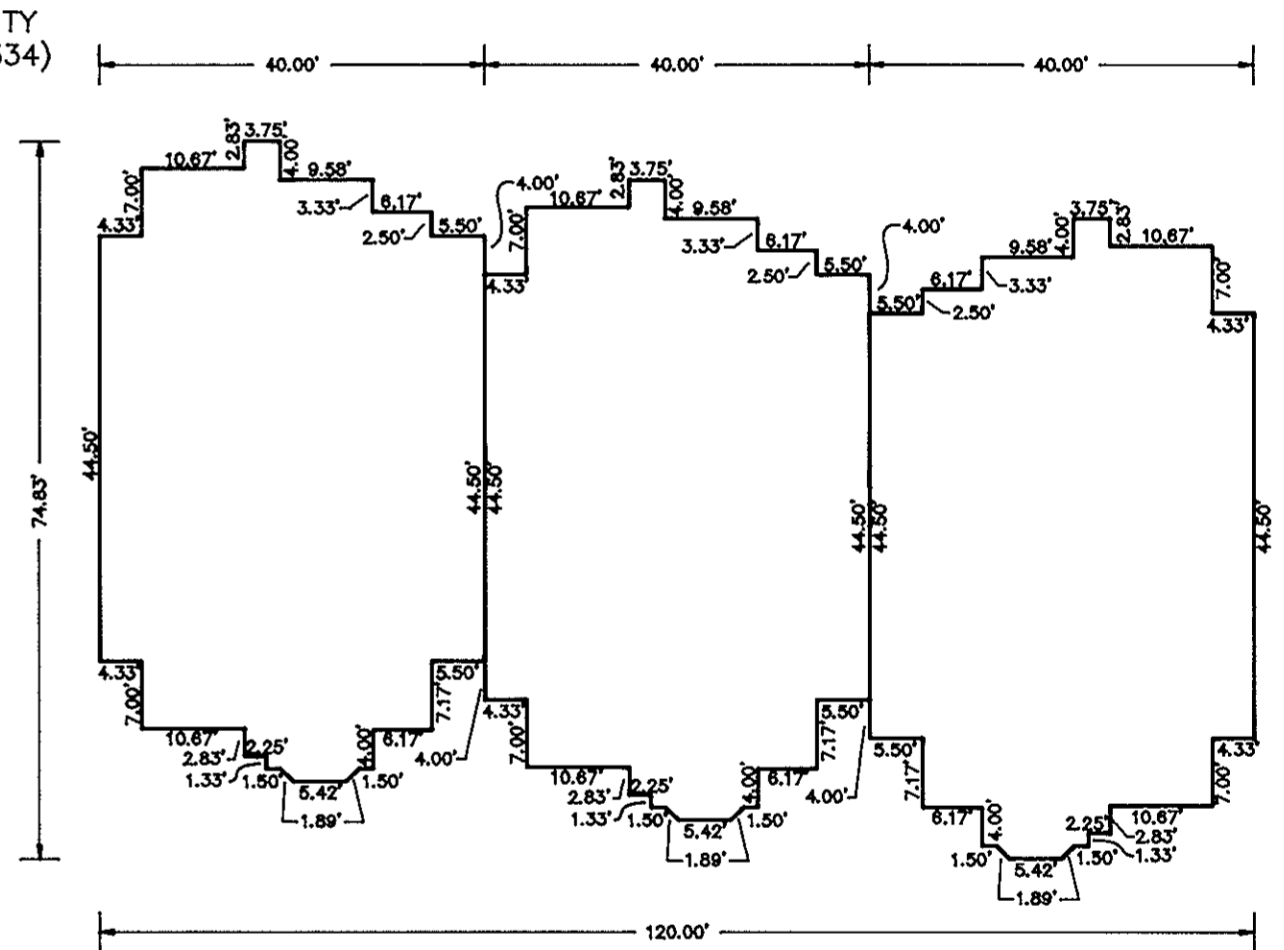
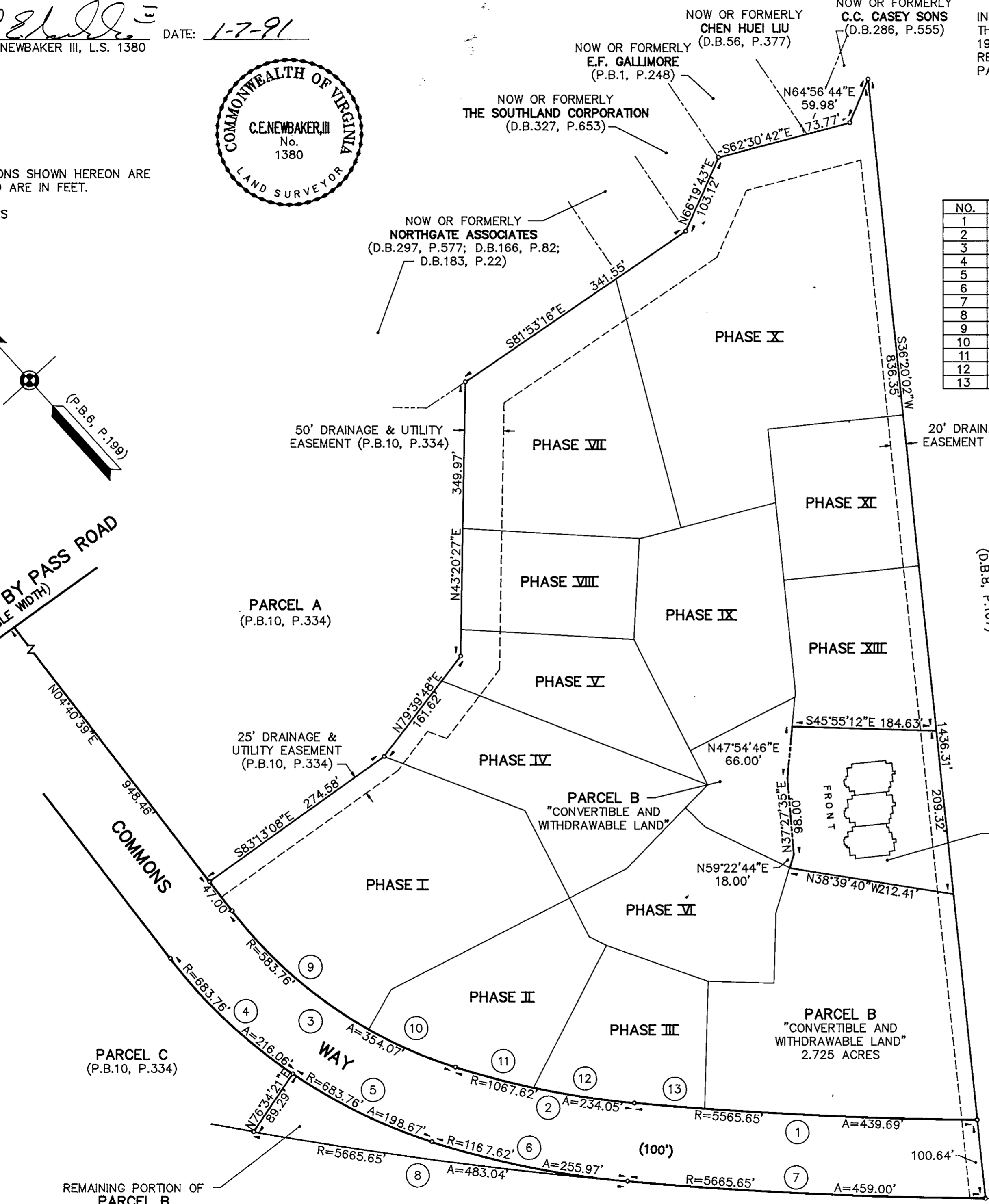
NO.	RADIUS	DELTA	ARC	TANGENT
1	5565.65'	04°31'35"	439.69'	219.96'
2	1067.62'	12°33'39"	234.05'	117.50'
3	583.76'	34°45'06"	354.07'	182.67'
4	683.76'	18°06'16"	216.06'	108.94'
5	683.76'	16°38'48"	198.67'	100.03'
6	1167.62'	12°33'39"	255.97'	128.50'
7	5665.65'	04°38'30"	459.00'	229.62'
8	5665.65'	04°53'06"	483.04'	241.67'
9	583.76'	22°51'55"	232.97'	118.05'
10	583.76'	11°53'11"	121.11'	60.77'
11	1067.62'	05°32'25"	103.23'	51.66'
12	1067.62'	07°01'14"	130.82'	65.49'
13	5565.65'	00°55'36"	90.00'	45.00'

NOTES:
 1. ALL BUILDING DIMENSIONS SHOWN HEREON ARE EXTERIOR DIMENSIONS AND ARE IN FEET.

PARCEL B = 17.630 ACRES



U.S. ROUTE 60 BYPASS ROAD
 (VARIABLE WIDTH)
 COMMONS



NOW OR FORMERLY
 C.C. CASEY SONS
 (D.B.8, P.107)

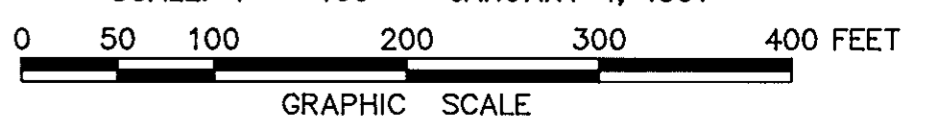
PHASE XIII
 0.879 ACRE

Witnessed for
 Jan. 8, 1991

(FRONT)
 FIRST FLOOR
 BUILDING 8

EXHIBIT M
 PHASE XIII
 SHEET 1 OF 4
 PLAT OF
WILLIAMSBURG COMMONS CONDOMINIUMS

FOR
 WILLIAMSBURG COMMONS, INC.
 A VIRGINIA CORPORATION
 BRUTON DISTRICT - COUNTY OF YORK, VIRGINIA
 SCALE: 1" = 100' JANUARY 4, 1991



THE SIRINE GROUP, LTD.
 SURVEYORS • ENGINEERS • PLANNERS
 P.O. BOX 450, ROUTE 17
 WHITE MARSH, VIRGINIA 23183

REMAINING PORTION OF
 PARCEL B
 "CONVERTIBLE AND WITHDRAWABLE LAND"

CHESAPEAKE AND OHIO RAILROAD