

PLAT OF SUBDIVISION
THE VILLAGES OF KILN CREEK
SINGLE FAMILY AREA 7

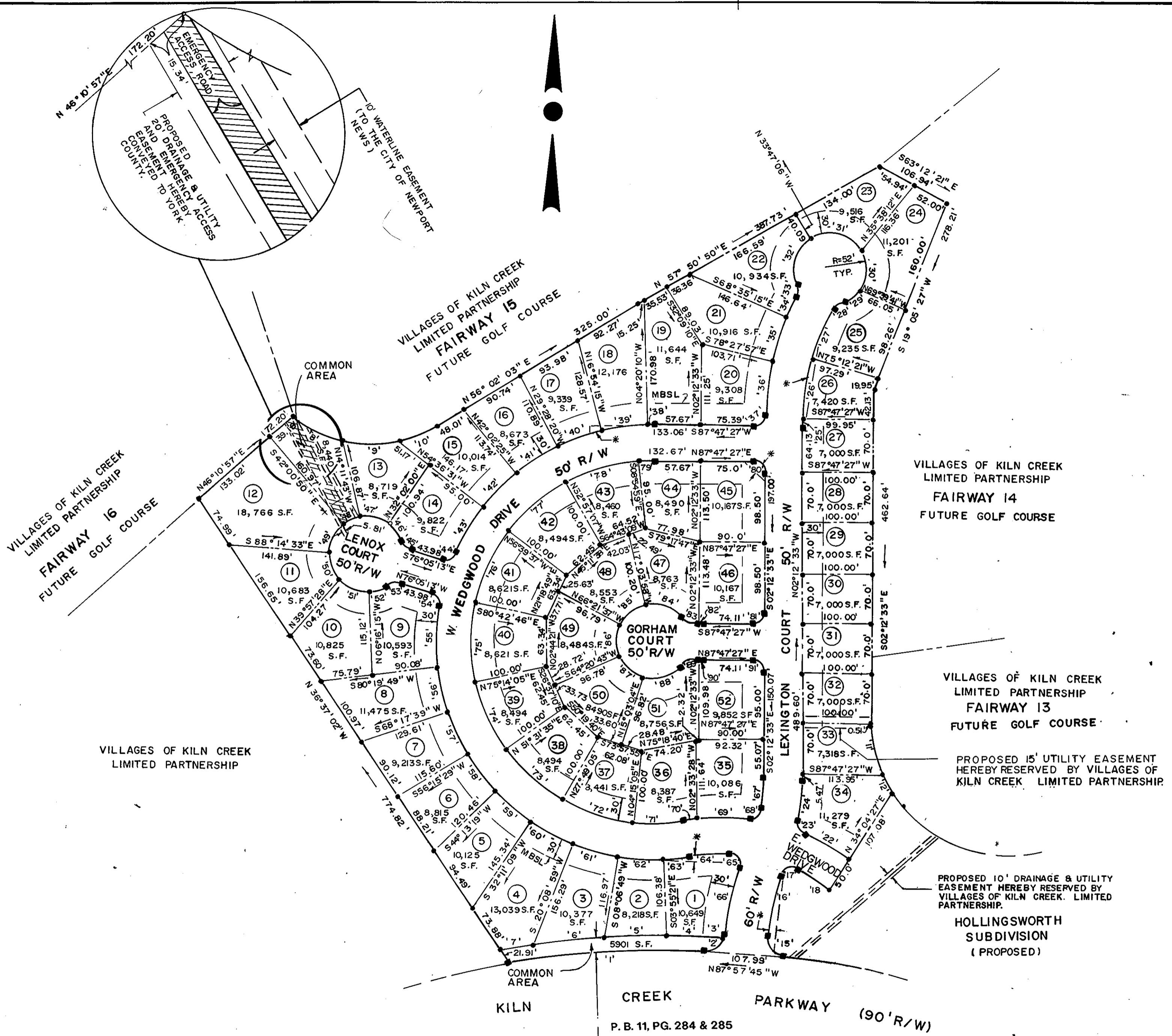
LEXINGTON

COUNTY OF YORK, VIRGINIA

FEBRUARY 14, 1990 SHEET 2 OF 3 SCALE: 1"=100'

SRA SLEDD, RUNEY & ASSOCIATES, P.C.
ENGINEERS • PLANNERS • SURVEYORS
11832 ROCK LANDING DRIVE, SUITE 203
NEWPORT NEWS, VIRGINIA 23606
(804) 873-3386

REVISED: FEBRUARY 5, 1991



NOTE: THIS PROPERTY DOES NOT LIE WITHIN THE 100 YEAR FLOOD ZONE.

PROPOSED 15' UTILITY EASEMENT HEREBY RESERVED BY VILLAGES OF KILN CREEK LIMITED PARTNERSHIP.

PROPOSED 10' DRAINAGE & UTILITY EASEMENT HEREBY RESERVED BY VILLAGES OF KILN CREEK LIMITED PARTNERSHIP.

HOLLINGSWORTH SUBDIVISION (PROPOSED)

APPROVED:
YORK COUNTY BOARD OF SUPERVISORS

BY: J. Mark Carter
PLAT APPROVING AGENT

DATE: APRIL 9, 1991

STATE OF VIRGINIA
COUNTY OF YORK

IN THE CLERK'S OFFICE OF THE CIRCUIT COURT FOR THE COUNTY OF YORK THE 9th DAY OF April, 1991 THIS MAP WAS PRESENTED AND ADMITTED TO RECORD AS THE LAW DIRECTS IN PLAT BOOK 11, PAGE 311.

TESTE: NANCY B. KANE, CLERK
CLERK

BY: Monica West, D.C.

* DENOTES PROPOSED VARIABLE WIDTH DRAINAGE & UTILITY EASEMENT HEREBY CONVEYED TO YORK COUNTY (10' FROM CENTERLINE OF SANITARY SEWER)

EXISTING 20' EASEMENT FOR LANDSCAPING, UTILITIES, IRRIGATION & DRAINAGE IS RESERVED BY KILN CREEK ASSOCIATES

P. B. 11, PG. 284 & 285

P. B. 11, PG. 284 & 285

LAKE NO. 6