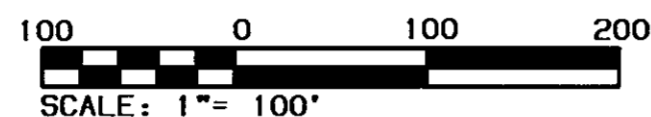


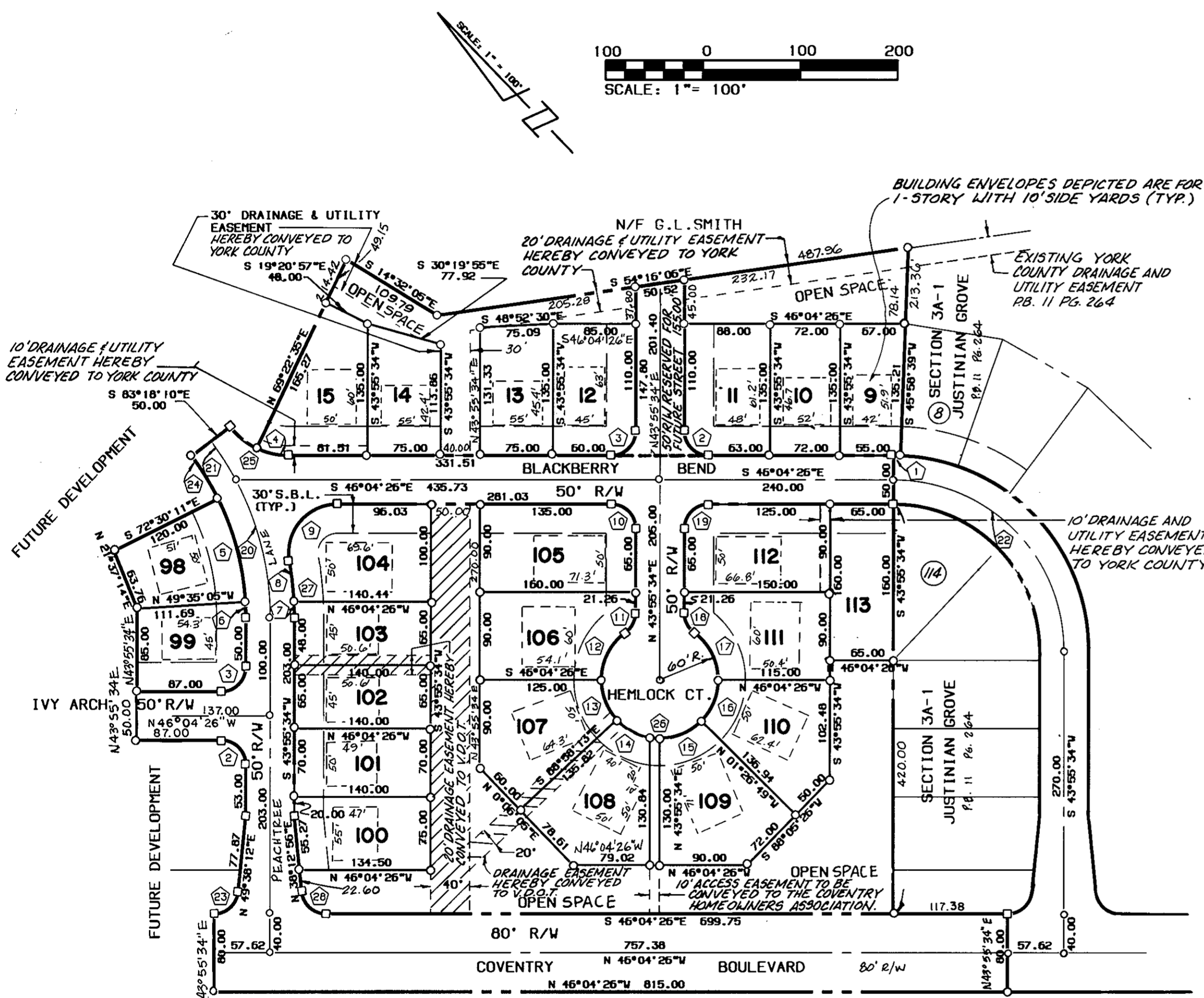
RECORD PLAT
FOR
COVENTRY PLANNED DEVELOPMENT
JUSTINIAN GROVE
SECTION 3A - 2
COUNTY OF YORK, VIRGINIA
THE DeYOUNG JOHNSON GROUP, INC.
P.O. BOX 3505
WILLIAMSBURG, VA. 23187

SCALE: 1"=100' DECEMBER 28, 1990
SHEET 2 OF 2 SHEETS



CURVE DATA

Δ	DELTA	RADIUS	LENGTH	TANGENT	CHORD BEARING	CHORD DIST.
1	02°03'05"	200.00	7.16	3.58	N 45°02'54"W	7.16
2	90°00'00"	25.00	39.27	25.00	N 01°04'26"W	35.36
3	90°00'00"	25.00	39.27	25.00	S 88°55'34"W	35.36
4	25°35'04"	75.00	33.49	17.03	N 33°16'54"W	33.21
5	22°55'06"	275.00	110.00	55.75	S 28°57'22"W	109.27
6	03°30'39"	275.00	16.85	8.43	S 42°10'14"W	16.85
7	02°59'54"	325.00	17.01	8.51	N 42°25'37"E	17.01
8	07°17'38"	325.00	41.37	20.71	N 37°16'51"E	41.34
9	100°17'32"	50.00	87.52	59.90	N 83°46'48"E	76.77
10	90°00'00"	25.00	39.27	25.00	S 01°04'26"E	35.36
11	53°58'05"	25.00	23.55	12.73	S 70°54'36"W	22.69
12	53°58'05"	60.00	56.52	30.55	S 70°54'36"W	54.45
13	42°53'47"	60.00	44.92	23.57	S 22°28'40"W	43.88
14	37°30'35"	60.00	39.28	20.37	S 17°43'30"E	38.58
15	45°22'23"	60.00	47.51	25.08	S 68°45'37"E	46.28
16	44°37'37"	60.00	46.73	24.62	N 66°14'23"E	45.56
17	53°58'06"	60.00	56.52	30.55	N 16°56'31"E	54.45
18	53°58'06"	25.00	23.55	12.73	N 16°56'31"E	22.69
19	90°00'00"	25.00	39.27	25.00	N 88°55'34"E	35.36
20	28°15'03"	300.00	147.92	75.50	N 29°48'02"E	146.43
21	08°58'40"	300.00	47.01	23.55	N 11°11'10"E	46.96
22	90°00'00"	175.00	274.89	175.00	S 01°04'26"E	247.49
23	84°17'22"	25.00	36.78	22.62	S 88°13'07"E	33.55
24	10°47'59"	275.00	51.84	25.99	N 12°05'50"E	51.76
25	52°46'16"	75.00	69.08	37.21	S 19°41'18"E	66.66
26	287°56'11"	60.00	301.53	43.64	N 46°04'26"W	70.59
27	10°17'32"	325.00	58.38	29.27	S 38°46'48"W	58.30
28	84°17'22"	25.00	36.78	22.62	S 03°55'45"E	33.55



LEGEND

- EASEMENTS SHOWN THUS ARE HEREBY CONVEYED TO THE COUNTY OF YORK FOR DRAINAGE & UTILITIES
- MINIMUM BUILDING SETBACK LINE SHOWN THUS
- CONCRETE MONUMENTS SHOWN THUS
- IRON PIPES SHOWN THUS
- EASEMENTS SHOWN THUS ARE HEREBY CONVEYED TO THE VIRGINIA DEPARTMENT OF TRANSPORTATION.

NOTE:
OPEN SPACE / COMMON AREA IS TO BE CONVEYED TO THE COVENTRY HOMEOWNERS ASSOCIATION.

NOTE:
PROPERTY IDENTIFIED AS TAX MAP 37-5 PART OF PARCEL 7A.

APPROVED
YORK COUNTY BOARD OF SUPERVISORS

BY: J. Mark Carter
PLAT APPROVING AGENT

DATE: APRIL 26, 1991

STATE OF VIRGINIA
COUNTY OF YORK

IN THE CLERK'S OFFICE OF THE CIRCUIT COURT FOR THE COUNTY OF YORK THE 30th DAY OF April, 1991
THIS MAP WAS PRESENTED AND ADMITTED TO RECORD AS THE LAW DIRECTS IN PLAT BOOK 11, PAGE 317.

TESTE: NANCY B. KANE, CLERK
CLERK

BY: Carol Drosselmin, R.C.
2/37 PM