

STATE OF VIRGINIA COUNTY OF YORK  
IN THE CLERK'S OFFICE OF THE CIRCUIT COURT FOR THE  
COUNTY OF YORK, THE DAY OF 1989, THIS  
PLAT WAS PRESENTED AND ADMITTED TO RECORD AS THE LAW DIRECTS  
IN PLAT BOOK PAGE

Filed in the Clerk's Office, Circuit Court, York Co., Va.  
the 2nd day of June 1989 SEE SHEET 1 FOR NOTES

Teste: Nancy B. Kane, Clerk  
Richard R. Whitehurst, D.C.

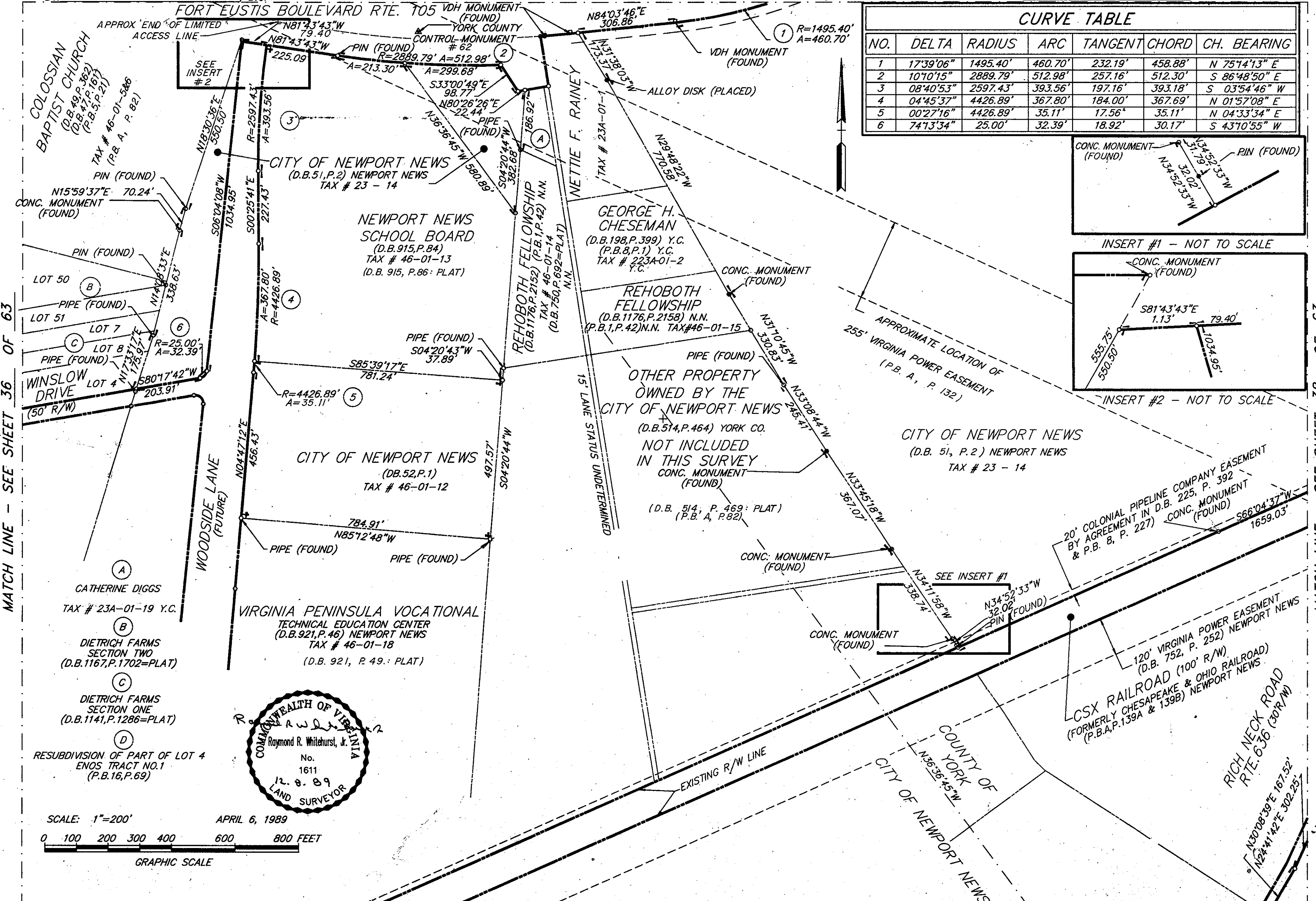
Plat Book No. 11 Page 464

VIRGINIA:  
IN THE CLERK'S OFFICE OF THE CITY OF NEWPORT NEWS,  
THE DAY OF 1989, THIS PLAT WAS PRESENTED  
AND ADMITTED TO RECORD AS THE LAW DIRECTS IN PLAT BOOK  
AT PAGE

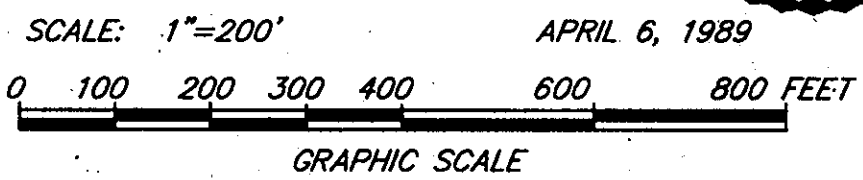
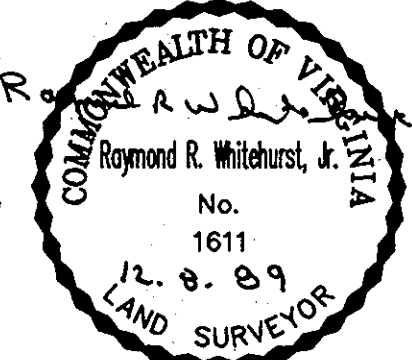
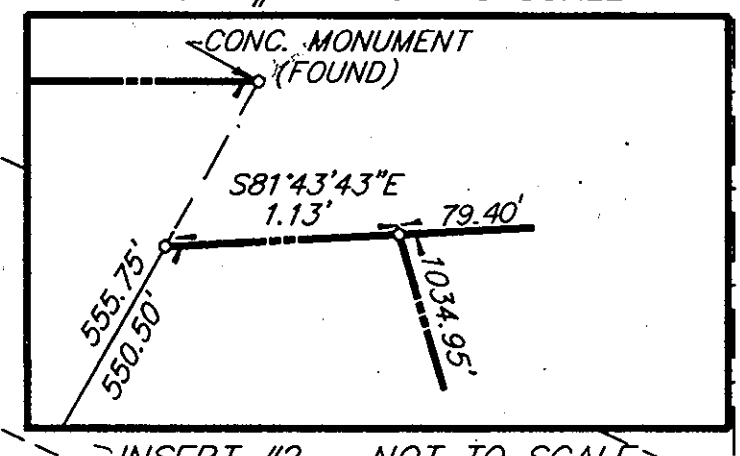
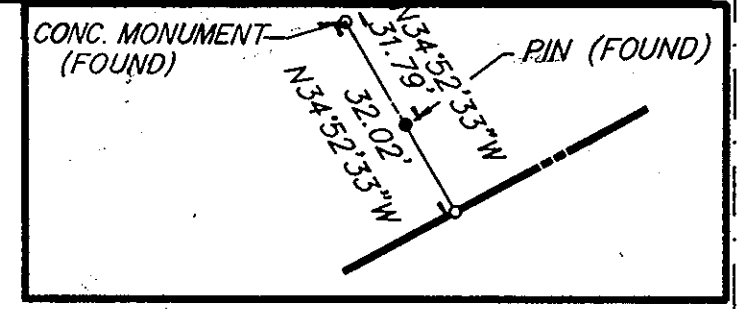
TESTE: \_\_\_\_\_ CLERK  
BY: \_\_\_\_\_ D.C.

MATCH LINE - SEE SHEET 30 OF 63

TESTE: \_\_\_\_\_ CLERK



CURVE TABLE						
NO.	DELTA	RADIUS	ARC	TANGENT	CHORD	CH. BEARING
1	17°39'06"	1495.40'	460.70'	232.19'	458.88'	N 75°14'13" E
2	10°10'15"	2889.79'	512.98'	257.16'	512.30'	S 86°48'50" E
3	08°40'53"	2597.43'	393.56'	197.16'	393.18'	S 03°54'46" W
4	04°45'37"	4426.89'	367.80'	184.00'	367.69'	N 01°57'08" E
5	00°27'16"	4426.89'	35.11'	17.56'	35.11'	N 04°33'34" E
6	74°13'34"	25.00'	32.39'	18.92'	30.17'	S 43°10'55" W



MATCH LINE - SEE SHEET 43 OF 63