

STATE OF VIRGINIA COUNTY OF YORK  
 IN THE CLERK'S OFFICE OF THE CIRCUIT COURT FOR THE  
 COUNTY OF YORK, THE DAY OF April 1989, THIS  
 PLAT WAS PRESENTED AND ADMITTED TO RECORD AS THE LAW DIRECTS  
 IN PLAT BOOK 11, PAGE 476.

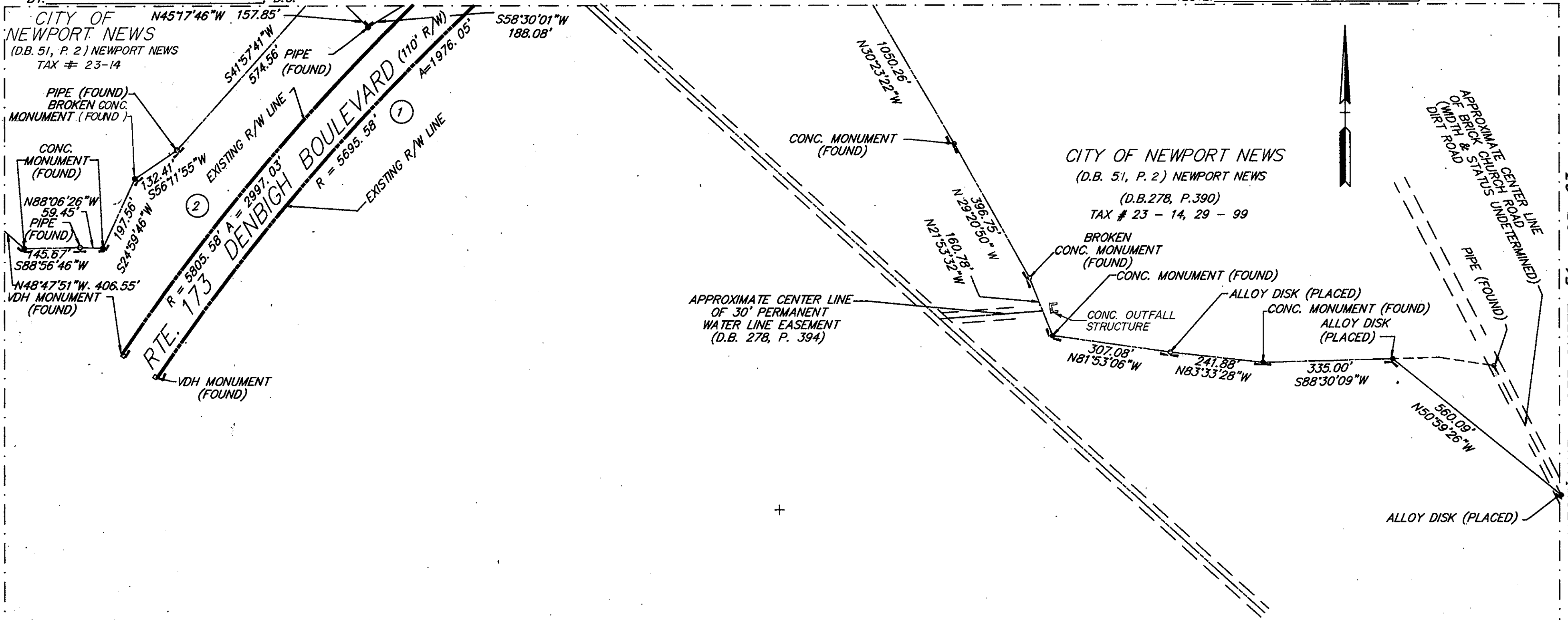
Filed in the Clerk's Office, Circuit Court, York Co., Va. SEE SHEET 1 FOR NOTES  
 the 2<sup>nd</sup> day of April 1989  
 Teste: Nancy B. Kane, Clerk D.C.  
Carol D. ...

VIRGINIA:  
 IN THE CLERK'S OFFICE OF THE CITY OF NEWPORT NEWS,  
 THE DAY OF April 1989, THIS PLAT WAS PRESENTED  
 AND ADMITTED TO RECORD AS THE LAW DIRECTS IN PLAT BOOK 11  
 AT PAGE 476.

TESTE: \_\_\_\_\_ CLERK  
 BY: \_\_\_\_\_ D.C.

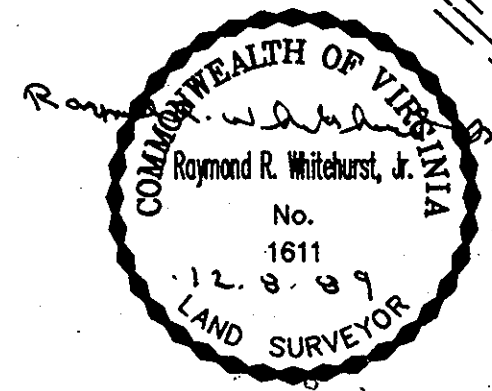
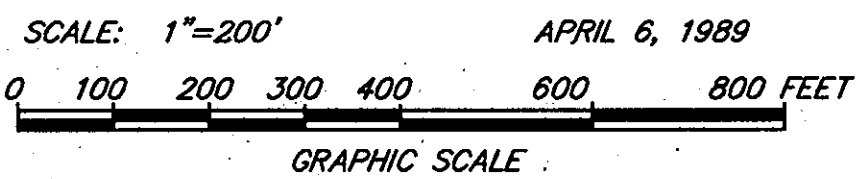
MATCH LINE - SEE SHEET 45 OF 63

TESTE: \_\_\_\_\_ CLERK



CURVE TABLE

NO.	DELTA	RADIUS	ARC	TANGENT	CHORD	CH. BEARING
1	19°52'42"	5695.58'	1976.05'	998.06'	1966.15'	N 44°14'14" E
2	29°34'41"	5805.58'	2997.03'	1532.70'	2963.86'	S 49°04'47" W



DWG. NO. 90-C-11  
 DWG. FILE NO. HA-1457  
 PRINT FILE NO. N-8141

MATCH LINE - SEE SHEET 49 OF 63

MATCH LINE - SEE SHEET 51 OF 63

MATCH LINE - SEE SHEET 53 OF 63