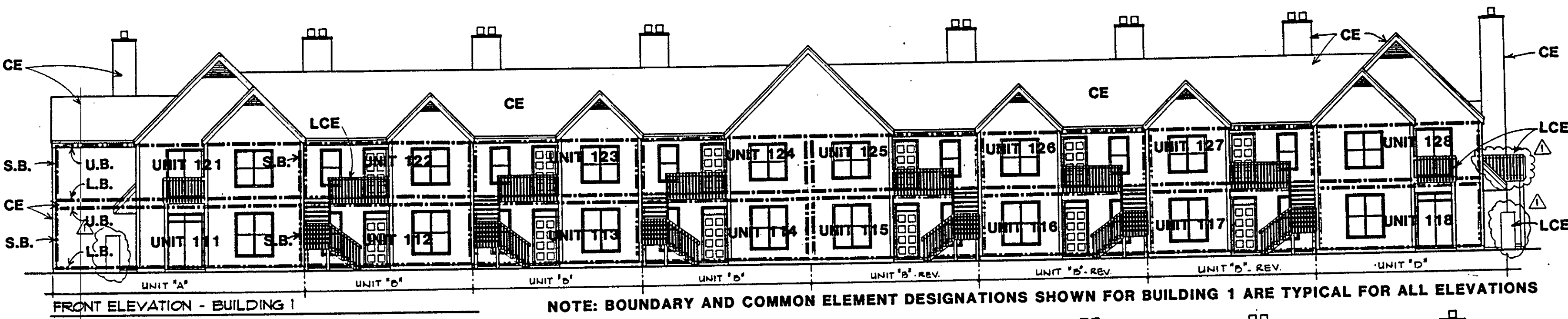


Plat Book No. 11 Page 500
 Filed in the Clerk's Office, Circuit Court, York Co., Va.
 the 5th day of June 1982
 Teste: Nancy B. Kane, Clerk 12:50 pm
Karen S. Kelpman D.C.

500

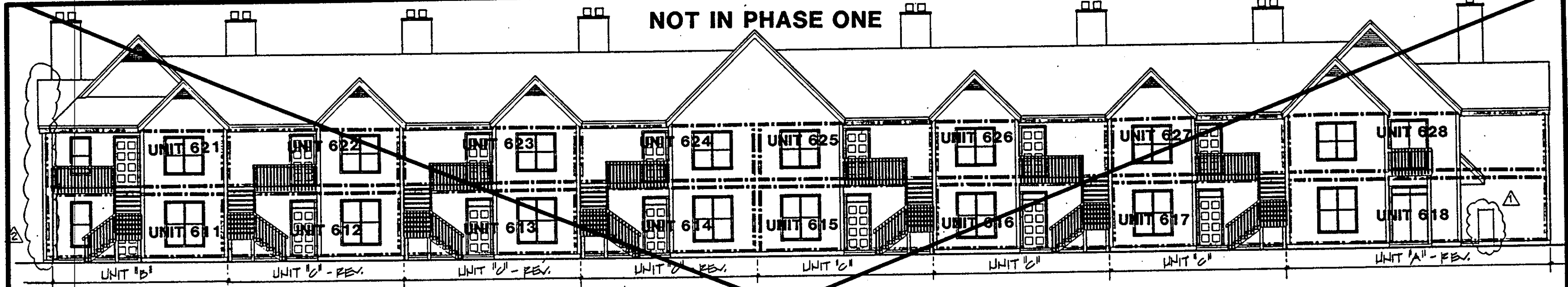


FRONT ELEVATION - BUILDING 1

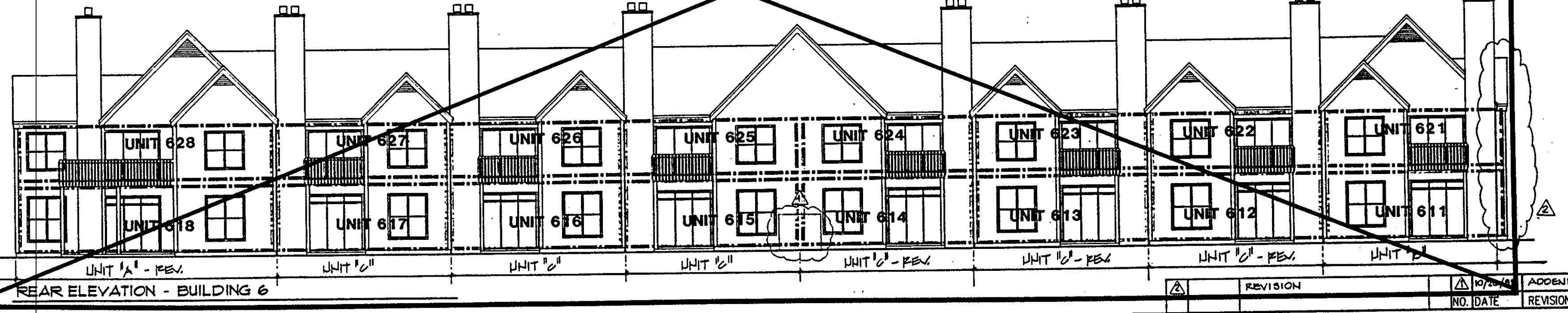
NOTE: BOUNDARY AND COMMON ELEMENT DESIGNATIONS SHOWN FOR BUILDING 1 ARE TYPICAL FOR ALL ELEVATIONS



REAR ELEVATION - BUILDING 1



FRONT ELEVATION - BUILDING 6



REAR ELEVATION - BUILDING 6

I hereby certify that this is a correct and accurate plan, that this plan is in compliance with Virginia Code Ann. Subsections 55-79.58 (b) and (e), and that the units depicted hereon have been substantially completed.

ARCHITECT'S CERTIFICATE

[Signature]
 Robert A. Magoon Jr., AIA

- LEGEND:
- S.B. - SIDE (PERIMETER) BOUNDARY
 - L.B. - LOWER BOUNDARY
 - U.B. - UPPER BOUNDARY
 - CE - COMMON ELEMENT
 - LCE - LIMITED COMMON ELEMENT.

WILLIAMS, TAZEWELL AND ASSOCIATES
 Architecture Engineering Planning Interiors
 710 West 21st Street, Norfolk, Virginia 23517

Plat of Condominium
 EAGLE SOUND AT KILN CREEK
 YORK COUNTY, VIRGINIA

EXHIBIT
 A-3
 PHASE ONE

File
 9146.01A
 Date

Sheet
 5 of 6

NO.	DATE	REVISIONS	ADDENDA