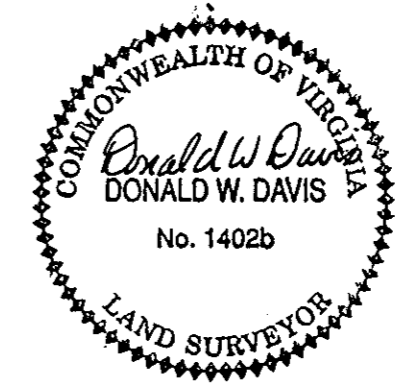
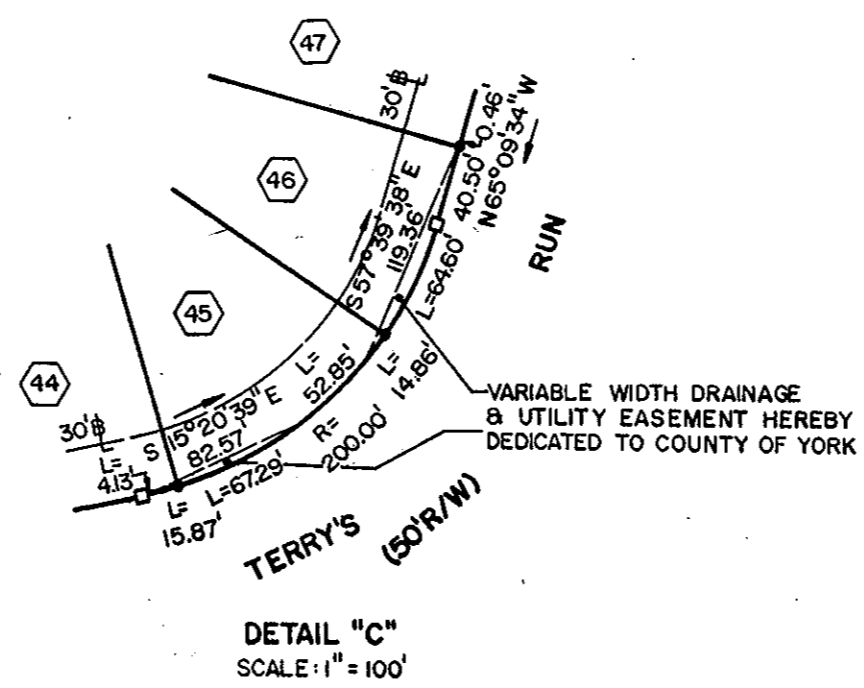
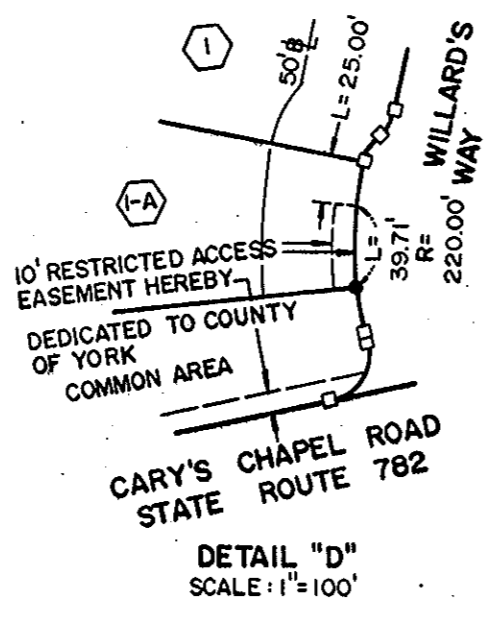
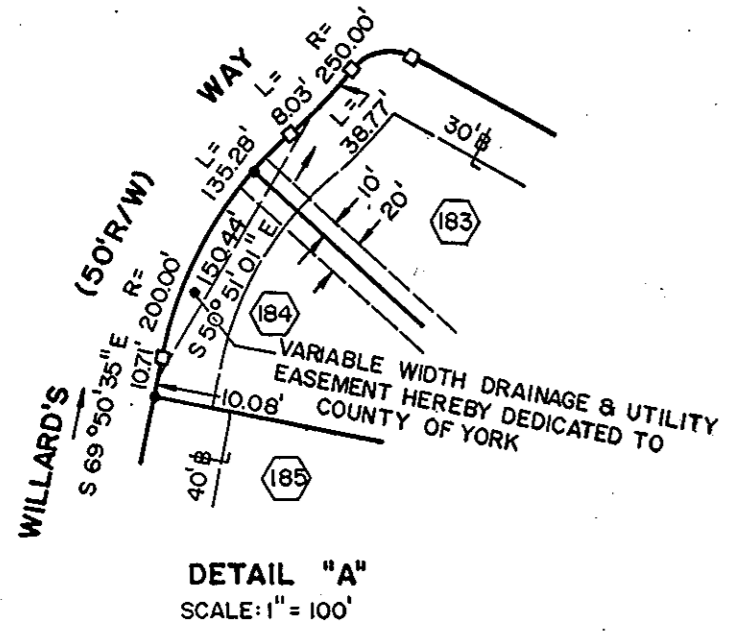
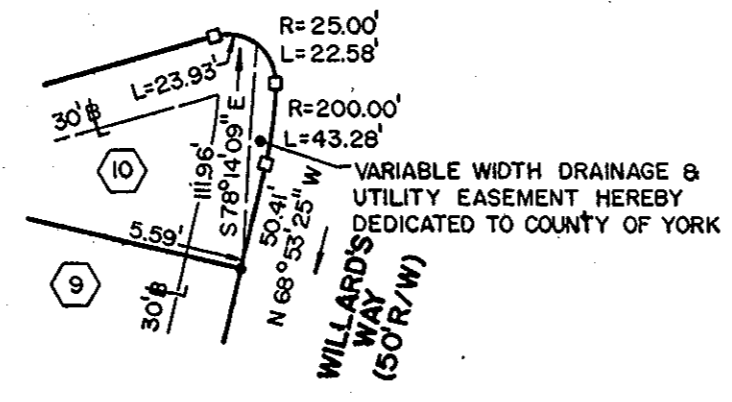
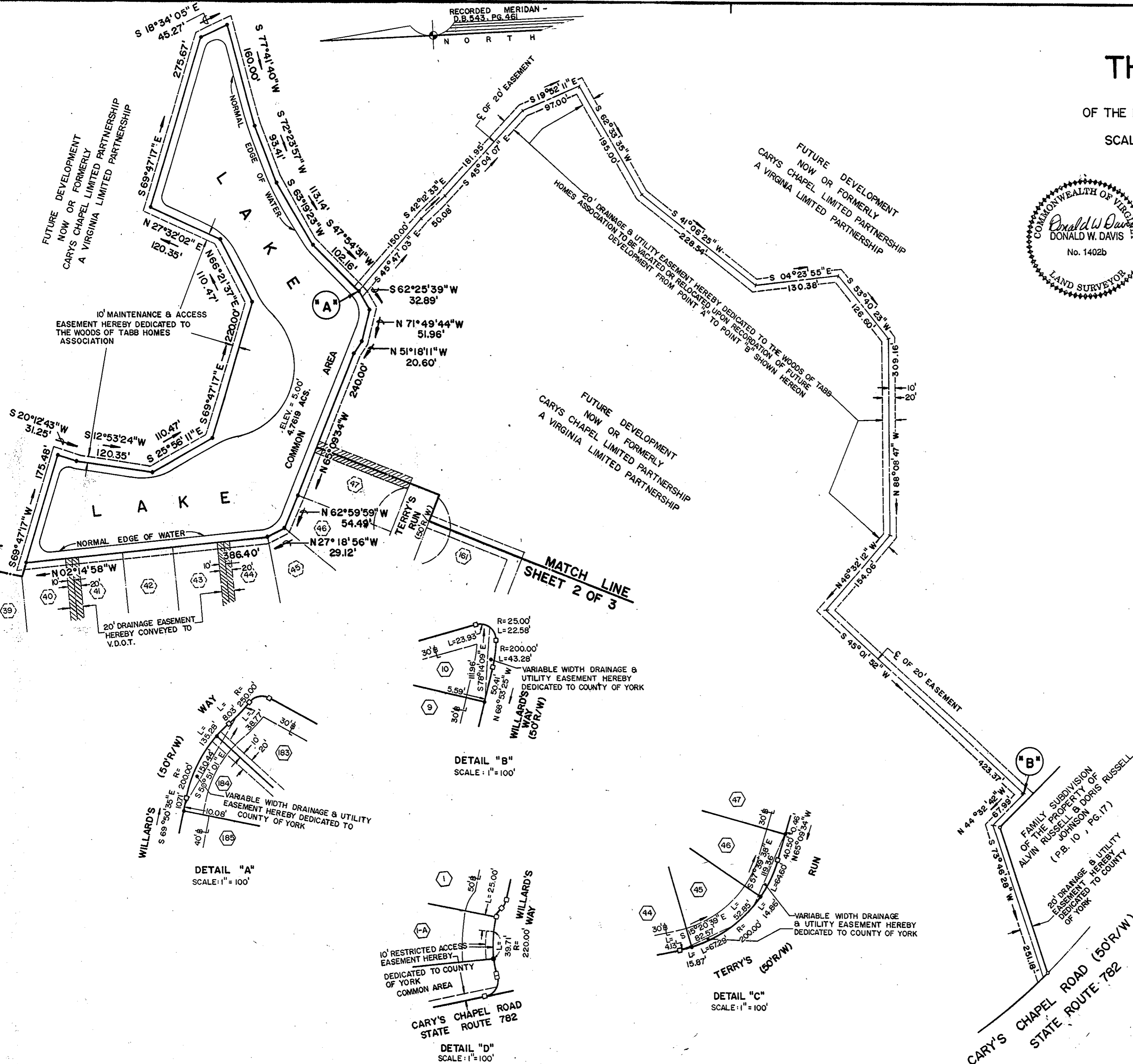


SUBDIVISION PLAT
OF
THE WOODS OF TABB
SECTION ONE
OF THE PROPERTY OF CARYS CHAPEL LIMITED PARTNERSHIP
COUNTY OF YORK, VIRGINIA
SCALE: 1" = 100' DATE: 26 FEBRUARY 1992

SHEET 3 OF 3
0 50 100 200
GRAPHIC SCALE



DAVIS & ASSOCIATES
LAND SURVEYORS - PLANNERS
4033 GEORGE WASHINGTON
MEMORIAL HIGHWAY
GRAFTON, VIRGINIA 23692



APPROVED
YORK COUNTY BOARD OF SUPERVISORS
BY: J. Mark Carter
PLAT APPROVING AGENT
DATE: July 2, 1992

STATE OF VIRGINIA
COUNTY OF YORK
IN THE CLERKS OFFICE OF THE CIRCUIT COURT FOR
THE COUNTY OF YORK THE 20th DAY OF July
1992. THIS MAP WAS PRESENTED AND ADMITTED TO
RECORD AS THE LAW DIRECTS IN PLAT BOOK 17,
PAGE 504.
TESTE: NANCY B. KANE, CLERK
CLERK
BY: Carol P. Dossalman, Deputy Clerk